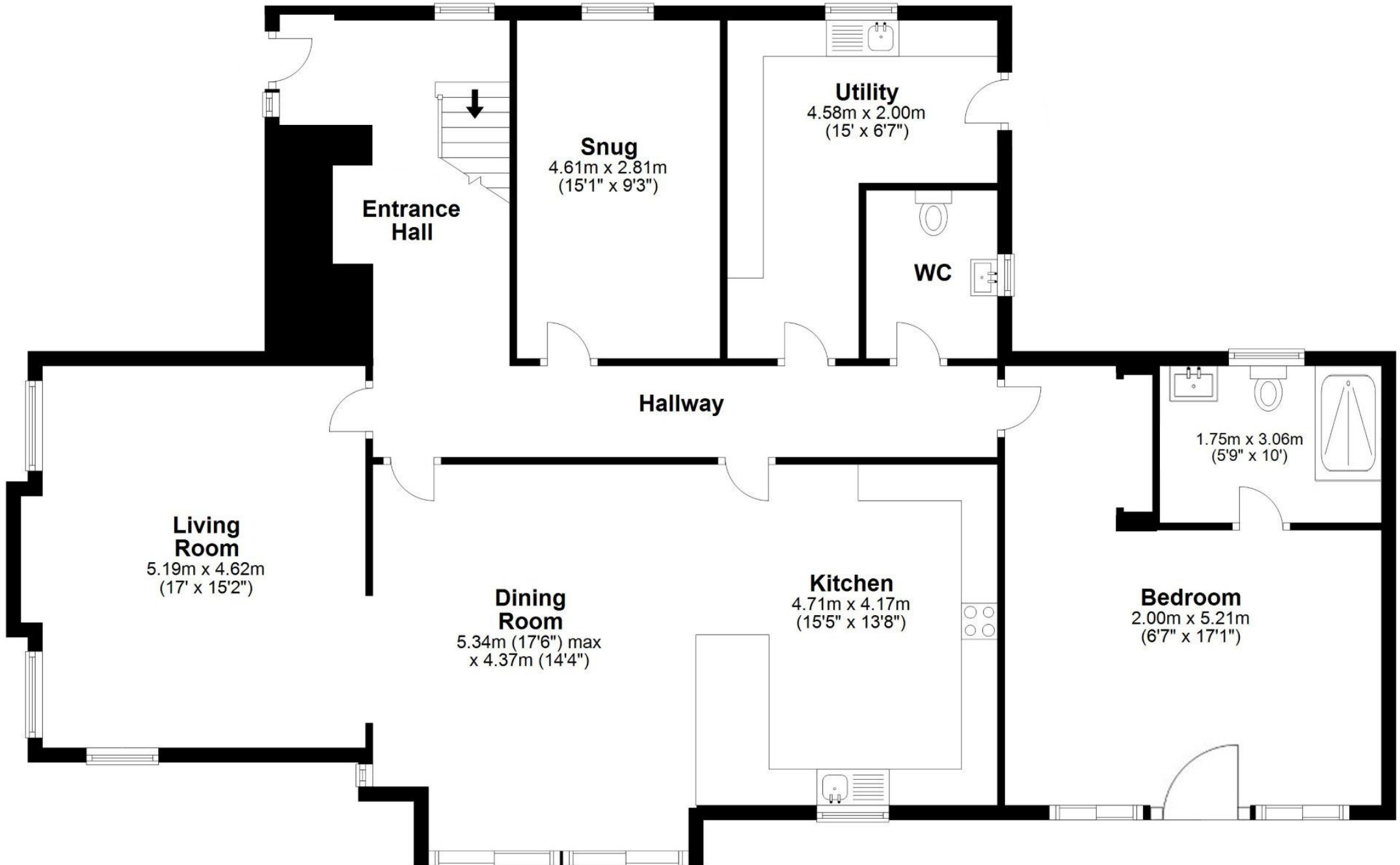


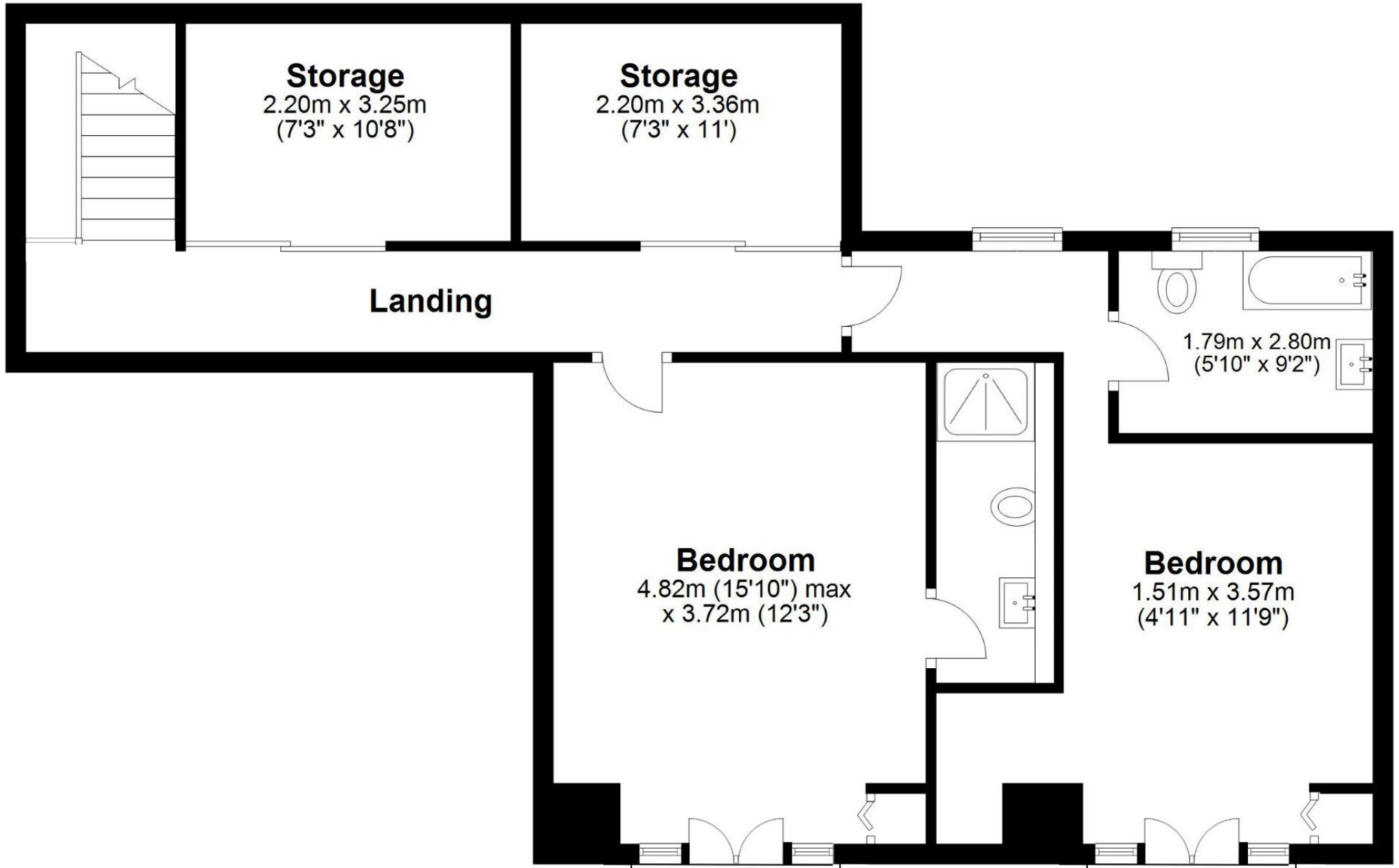
# Ground Floor

Approx. 151.5 sq. metres (1630.9 sq. feet)



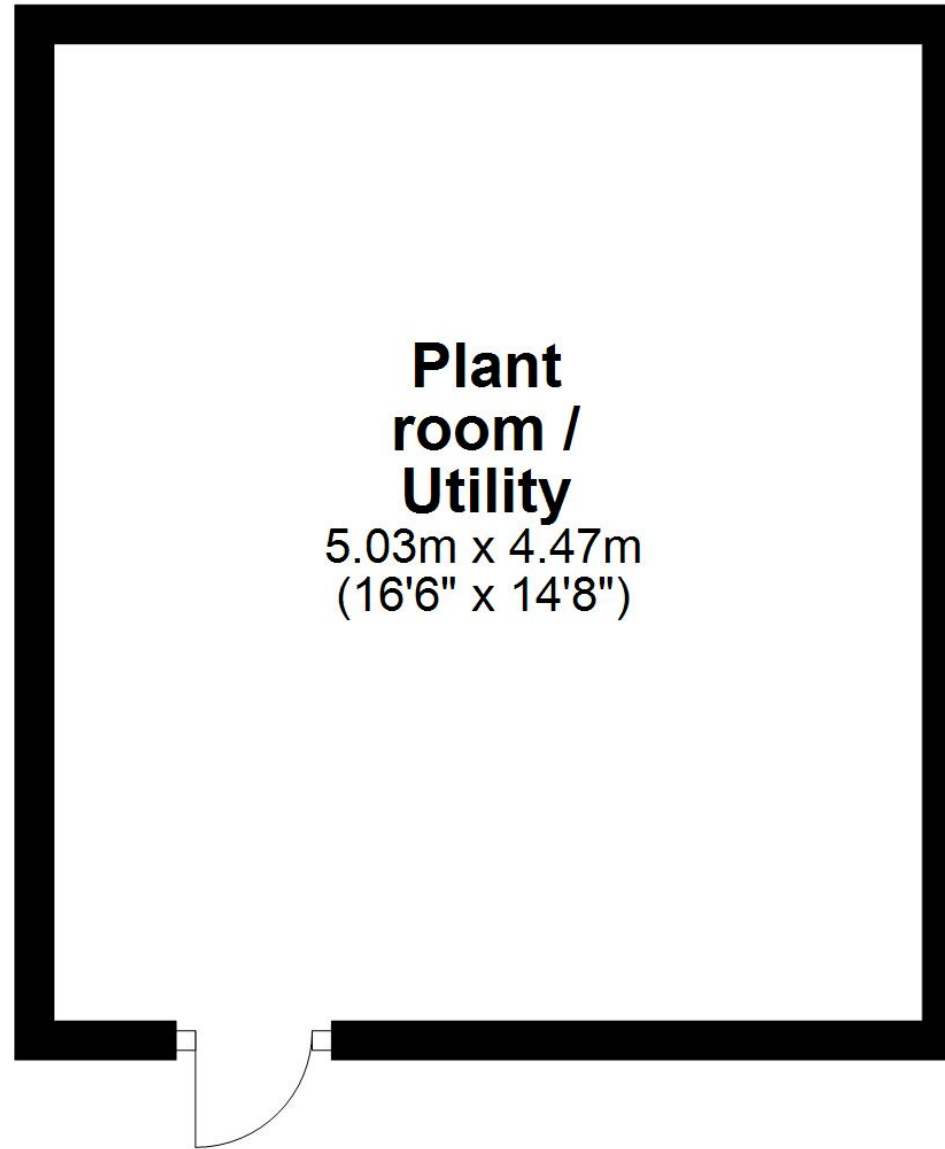
# First Floor

Approx. 78.3 sq. metres (843.1 sq. feet)



# Basement

Approx. 22.5 sq. metres (242.0 sq. feet)



Total area: approx. 252.3 sq. metres (2716.0 sq. feet)