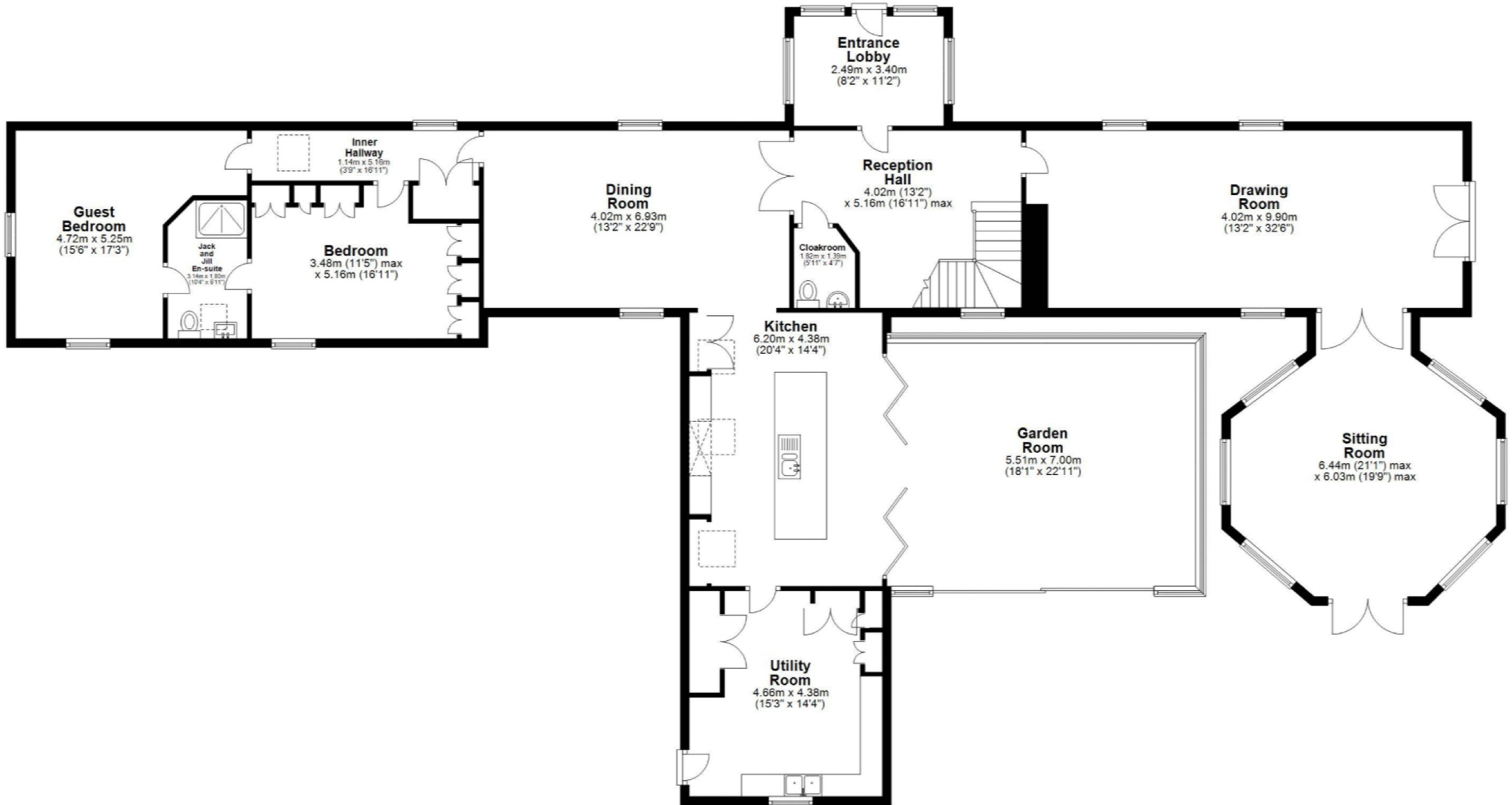


**Ground Floor**

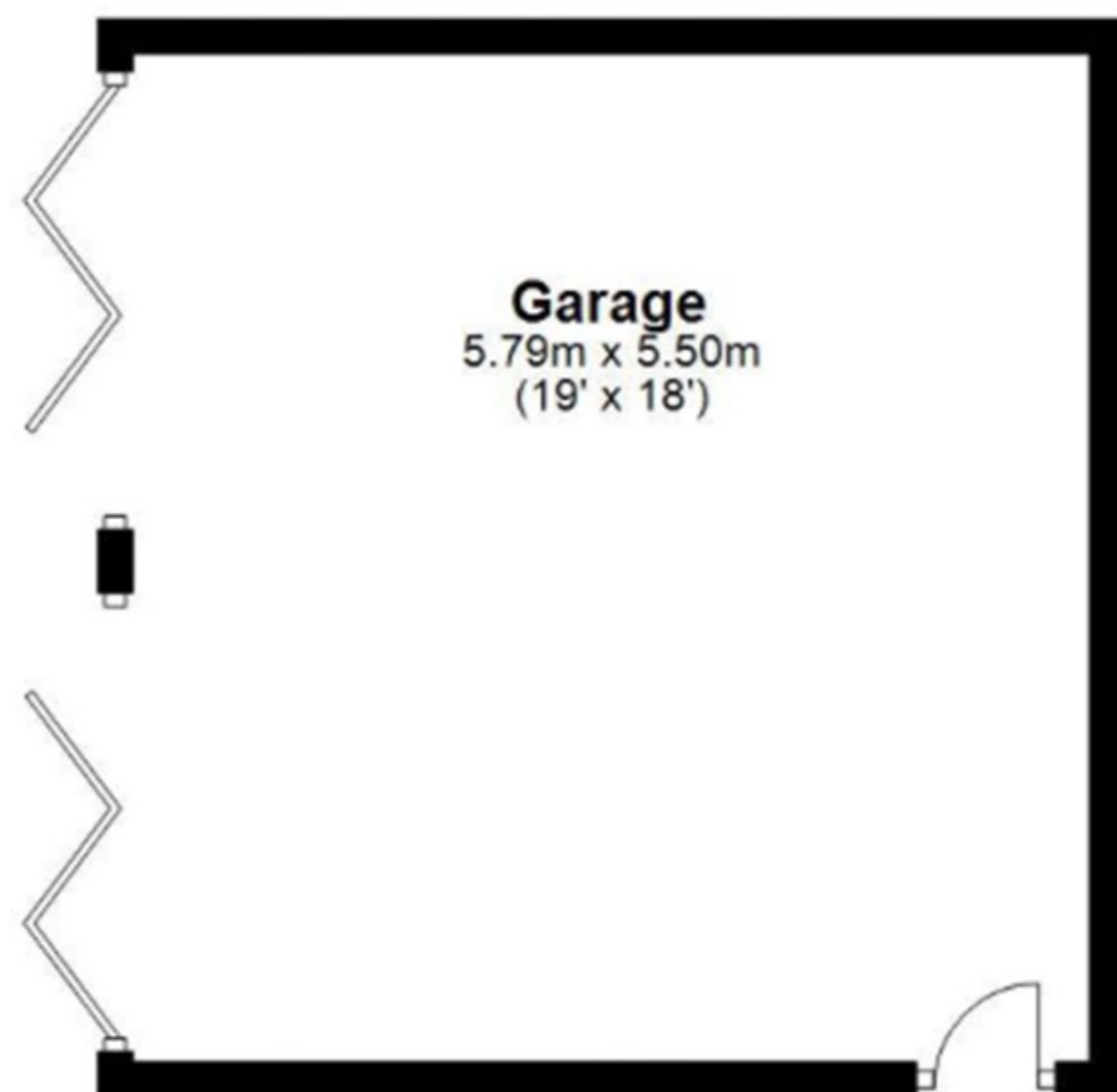
Approx. 265.2 sq. metres (2854.4 sq. feet)



Total area: approx. 386.6 sq. metres (4161.0 sq. feet)  
**Hazel Mill, Eachwick**

**Garage**

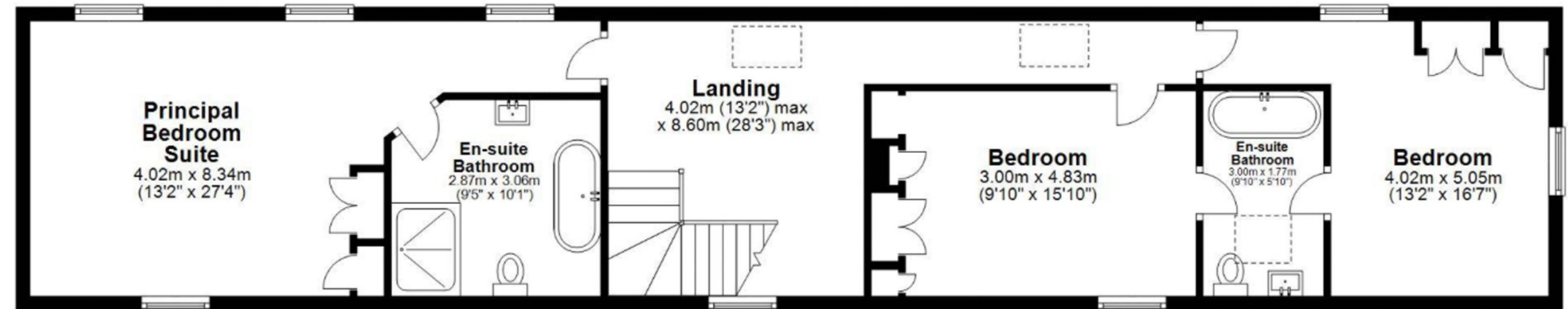
Approx. 31.8 sq. metres (342.8 sq. feet)



**Garage**  
5.79m x 5.50m  
(19' x 18')

**First Floor**

Approx. 89.5 sq. metres (963.8 sq. feet)



**Principal  
Bedroom  
Suite**  
4.02m x 8.34m  
(13'2" x 27'4")

**En-suite  
Bathroom**  
2.87m x 3.06m  
(9'5" x 10'1")

**Landing**  
4.02m (13'2") max  
x 8.60m (28'3") max

**Bedroom**  
3.00m x 4.83m  
(9'10" x 15'10")

**En-suite  
Bathroom**  
3.00m x 1.77m  
(9'10" x 5'10")

**Bedroom**  
4.02m x 5.05m  
(13'2" x 16'7")

Total area: approx. 386.6 sq. metres (4161.0 sq. feet)  
**Hazel Mill, Eachwick**