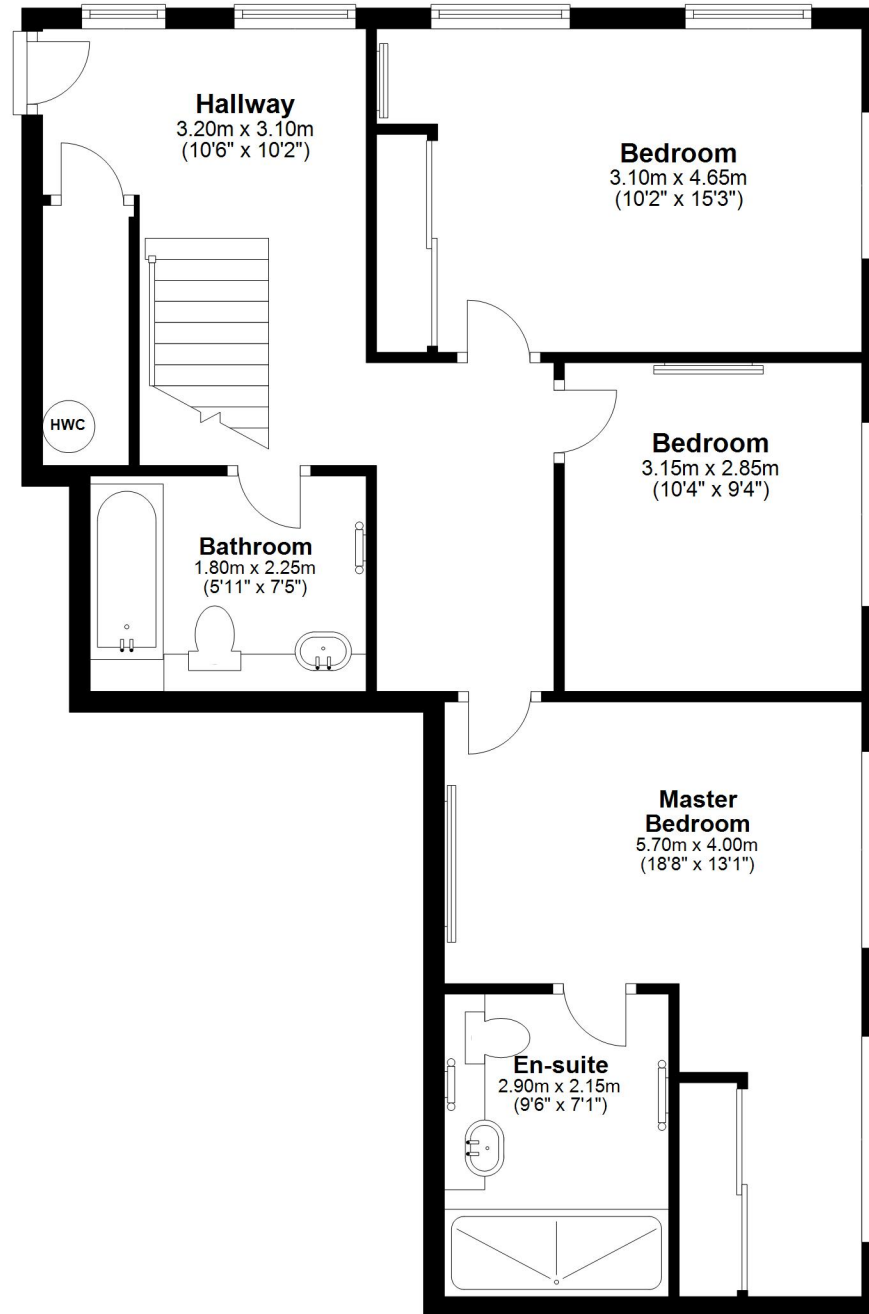


Tenth Floor

Approx. 70.7 sq. metres (760.5 sq. feet)



Total area: approx. 134.5 sq. metres (1447.3 sq. feet)

Top Floor

Approx. 63.8 sq. metres (686.9 sq. feet)

Balcony

1.80m x 9.50m
(5'11" x 31'2")

Lounge/Diner

9.57m x 9.50m
(31'5" x 31'2")

