

# WARWICK SQUARE, SW1

APPROXIMATE GROSS INTERNAL AREA

LOWER GROUND FLOOR (INCLUDING INTERNAL VAULT AND REDUCED HEIGHT) = 1597 SQ. FT. (148 SQ. M.)

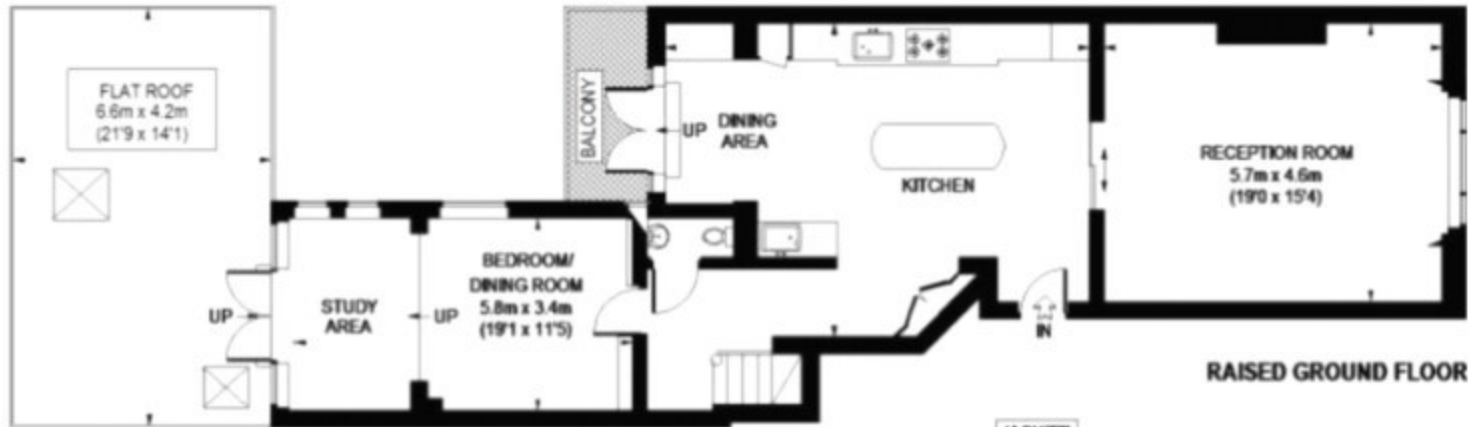
GROUND FLOOR = 947 SQ. FT. (88 SQ. M.)

TOTAL = 2544 SQ. FT. (236 SQ. M.)

VAULT (EXCLUDING REDUCED HEADROOM) = 84 SQ. FT. (8 SQ. M.)

REDUCED HEADROOM = 74 SQ. FT. (7 SQ. M.)

TOTAL = 2702 SQ. FT. (251 SQ. M.)



RAISED GROUND FLOOR



LOWER GROUND FLOOR