

Finest

PROPERTIES

finest.co.uk

Harker | Carlisle | Cumbria

Old Swinford





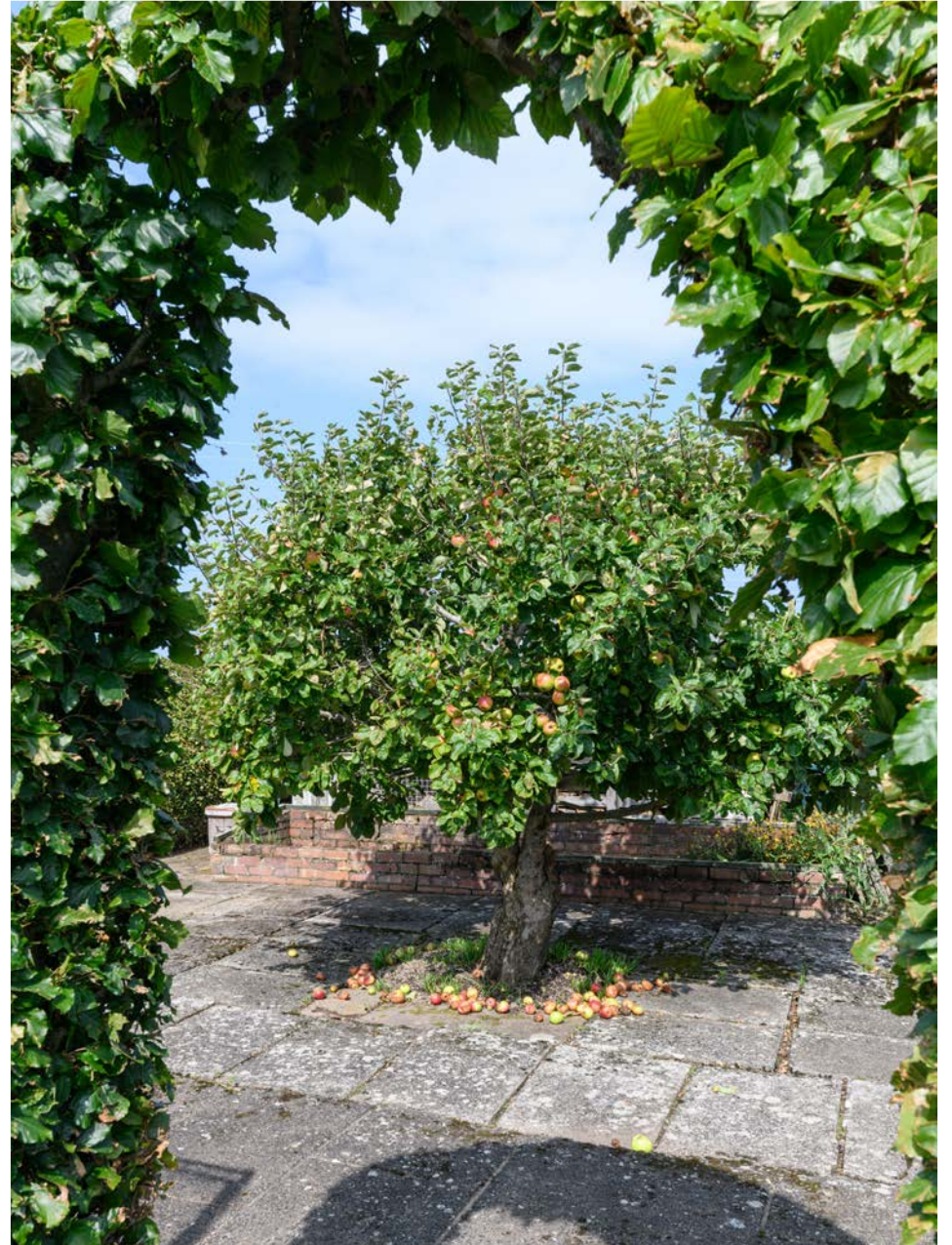
Accommodation in Brief

Ground Floor

Porch | Entrance Hall | Dining Room | Living Room | Kitchen | Utility Room
Sitting Room | WC | Bathroom | Double Bedroom

First Floor

Three Double Bedrooms | Bathroom | Two Storage Cupboards





The Property

Situated in the hamlet of Harker, on the outskirts of Carlisle, Old Swinford is a charming 1930s detached dormer bungalow with a unique history. The house was built with the winnings from a horse race bet and proudly bears the victorious horse's name.

A wooden gate opens to a sweeping driveway, creating an impressive entrance with ample off-road parking. Inside, the living areas have been thoughtfully renovated to preserve the original 1930s charm, showcasing high ceilings, striking fireplaces, solid wooden lintels, and classic paneling.

The entrance hallway winds through the ground floor, leading to the expansive reception areas that feature two separate sitting rooms. Additionally, there is a generously sized double bedroom and a bathroom showcasing an original pink suite. The largest sitting room is bathed in natural light from a large bay window and has elegant window seating from which to enjoy the views of the beautiful landscaped front garden. The room also features an inglenook fireplace with a multi-fuel burner. The second sitting room is a versatile space that could easily be converted into a designated home office or fifth bedroom.

The kitchen, with its classic design, is well-equipped with wooden cabinetry and integrated appliances, including a dishwasher, Neff double oven, and gas hob. A separate pantry provides additional storage. Whilst there is space for a table and chairs here, the grand dining room with striking oak flooring offers a more formal setting for dining and entertaining.





A utility room includes plumbing for a washing machine, a traditional Belfast sink, and allows direct access to an additional storeroom, the double garage, and out into the garden.

On the first floor, you'll find convenient storage cupboards on the landing and three generously sized double bedrooms with charming eaves features, each benefiting from built-in storage cupboards. A family bathroom serves these rooms, featuring an over-bath shower and stunning views of the Langholm Hills.

The property offers excellent potential for expansion, with the possibility of extending over the garage and the opportunity to install an en-suite in the downstairs bedroom. Additionally, there is outline planning permission for a new 4-bedroom dwelling at the front of the property.

Reference: 24/0163 | Erection Of 1 no. Dwelling | Land adjacent Old Swinford, Harker, Carlisle, CA6 4DS

https://publicaccess.carlisle.gov.uk/online-applications/applicationDetails.do?keyVal= CARLI_DCAPR_86453&activeTab=summary







Externally

A standout feature of the property is the superb, well-stocked south-facing garden, which boasts an expansive lawn and an array of well-stocked flower beds, mature herbaceous borders, and a variety of large trees and shrubs.

To the side, a horticultural paradise awaits with raised vegetable gardens, fruit bush cages and a delightful assortment of fruit trees, including plum, cherry, damson, and apple. A greenhouse shelters a thriving grapevine, and a garden shed provides convenient storage and workspace equipped with power.

To the rear, a north-facing lawn is bordered by beautifully landscaped walls and showcases a large central bird bath. A serene west-facing arbour provides the perfect spot to relax and enjoy the evening sun.





Local Information

Old Swinford is in the north of Carlisle with excellent access to the M6, Scotland, the Solway Coast, the Lake District National Park and only a couple of miles from Hadrian's Wall. The surrounding countryside offers excellent walks and outdoor opportunities. Carlisle is within easy reach and offers a comprehensive range of social, leisure, retail and cultural opportunities with an attractive pedestrian area and an impressive cathedral and castle.

For schooling, there are several primary and secondary schools all within easy reach, whilst private schooling is offered at Austin Friars School in Carlisle.

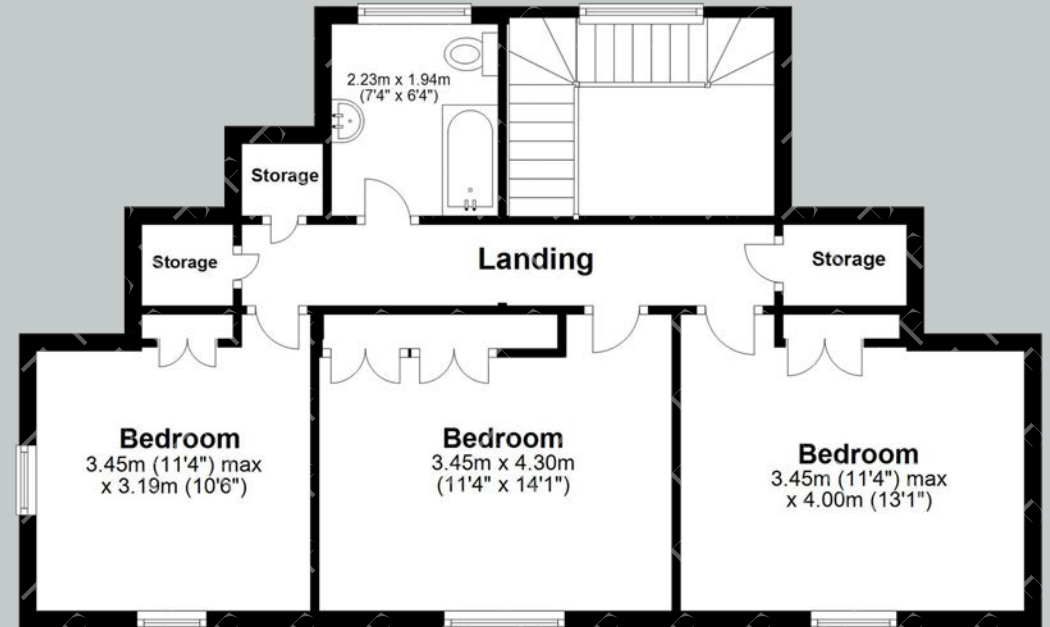
The property is well positioned for public transport, access to surrounding villages and the M6 for onward travel north and south, while the A69 provides easy access to Newcastle in the east. There is a rail station in Carlisle providing excellent main line services to major UK cities north and south.



Floor Plans



Ground Floor



First Floor

Total area: approx. 235.1 sq. metre (2530.7 sq. feet)

Google Maps

what3words



///carrots.estimates.laughs

Wayleaves, Easements & Rights of Way

The property is being sold subject to all existing wayleaves, easements and rights of way, whether or not specified within the sales particulars.

Services

Mains electricity, and water. Drainage to a septic tank.

Gas central heating.

Postcode

Council Tax

EPC

Tenure

CA6 4DS

Band E

Rating D

Freehold

Viewings Strictly by Appointment

T: 0330 111 2266

E: contact@finest.co.uk





Finest

PROPERTIES

White Ox | Scotland Road | Penrith | CA11 8QN

0330 111 2266 | contact@finest.co.uk

finest.co.uk

IMPORTANT INFORMATION Finest Properties, for themselves and for the Vendors and Lessors of this property whose Agents they are give notice that: (1) The particulars are set out as a general outline only for the guidance of intended purchasers or lessees and do not constitute, nor constitute part of, an offer or contract; (2) All descriptions, dimensions, reference to condition and necessary permissions for use and occupation and other details are given without responsibility and any intending purchasers or tenants should not rely on them as statements or representations of fact, but must satisfy themselves by inspection or otherwise as to the correctness of each of them; (3) No person in the employment of Finest Properties, has any authority to make or give any representation or warranty whatever in relation to this property.