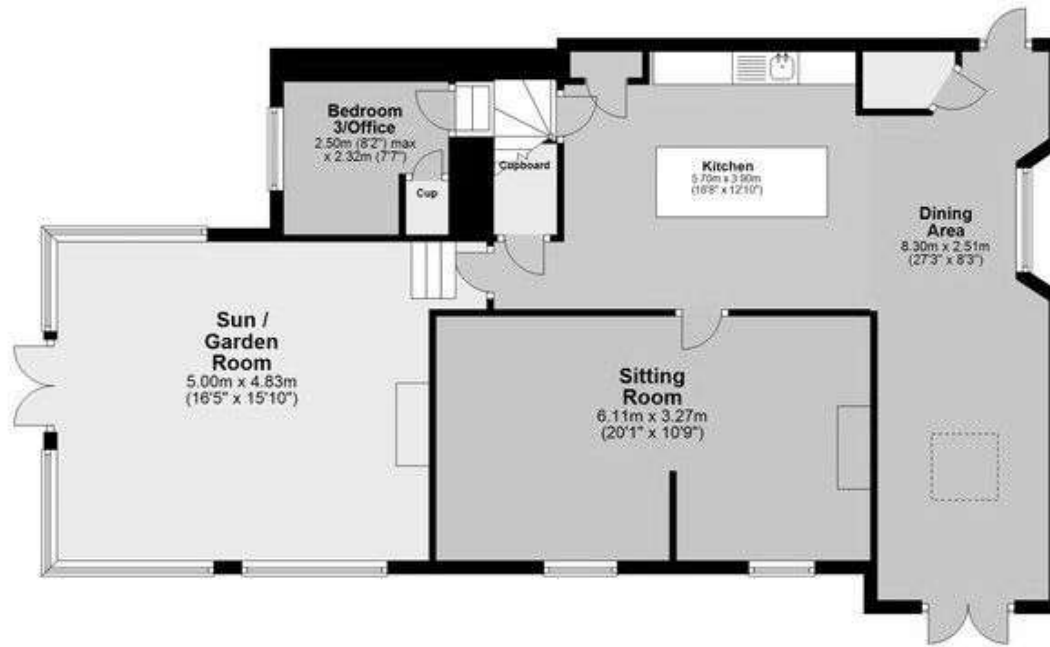
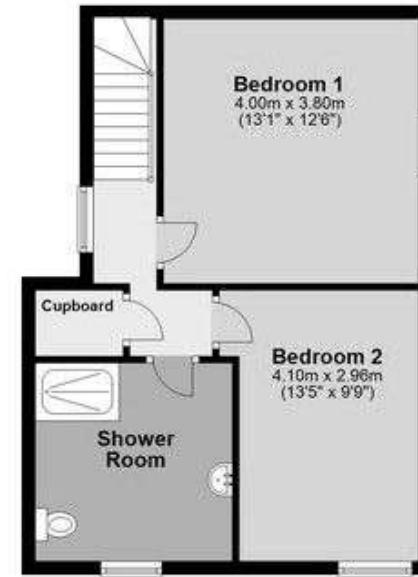


**Ground Floor**  
Approx. 151.4 sq. metres (1629.2 sq. feet)



**First Floor**  
Approx. 54.1 sq. metres (582.4 sq. feet)



Total area: approx. 205.5 sq. metres (2211.6 sq. feet)

For illustrative purposes only. Not to scale.  
Plan produced using PlanUp.