

Alston | Cumbria

Bramble House



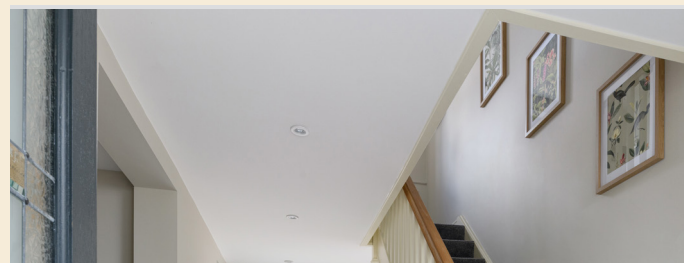
“A superbly renovated and substantial property with generous gardens and spectacular views over stunning scenery”

The Property

Positioned high above the valley floor with panoramic views across the moors of the North Pennines AONB, Bramble House is a strikingly individual country home that pairs spacious, high-specification interiors with one of the most expansive rural outlooks in the region. The house sits within its own defined plot at the edge of a former farmstead, now a quiet residential cluster, and has been thoughtfully remodelled to suit modern living while retaining a strong sense of place.

Accommodation is arranged over three floors and flows from a glazed entrance porch into a broad central hallway laid with heritage-style tiles. On the Northern aspect, a vaulted sitting room sets the tone — a generous yet grounded space with earthy tones, bespoke cabinetry, exposed trusses, painted panelling, and a deep inglenook fireplace now housing a woodburning stove.

The kitchen and dining room sit at the centre of the house, opening through French doors to the garden beyond. In the kitchen, granite and quartz worktops are set above shaker-style cabinetry, with a Rangemaster cooker recessed into a tiled chimney breast and a central island providing both workspace and informal seating.



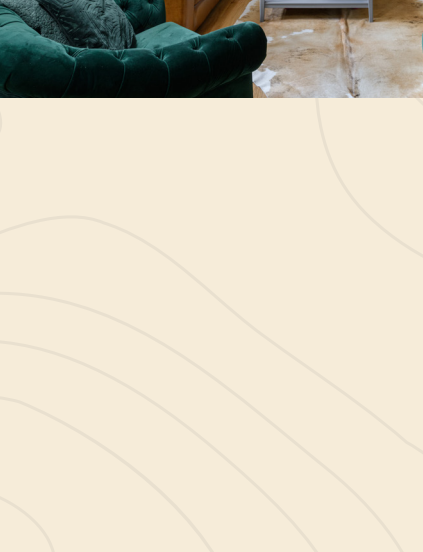
A walk-in pantry is tucked discreetly behind the kitchen, and there's ample space for a large dining table beside the doors — perfectly placed to draw the eye outside.

A rear hallway leads to a separate utility room with further cabinetry and laundry plumbing, alongside a guest WC and a versatile room currently used as a home study.

Four bedrooms lie on the first floor, all light-filled and decorated with tasteful neutral tones. The principal bedroom enjoys a dual aspect with open views across surrounding farmland and a dedicated dressing area with fitted wardrobes. Its en-suite is smartly finished, while the family bathroom serves the remaining rooms and includes a freestanding bath, a walk-in rainfall shower, and wood-effect flooring that ties neatly to the overall palette.

The top floor is currently arranged as a self-contained suite — a thoughtful space for older children, long-stay guests, or multi-generational living. It includes a sitting area, fitted kitchenette, bedroom, bathroom, and a study space tucked beneath the eaves.





Google Maps

what3words



/// sharpen.premature.facelift

Wayleaves, Easements & Rights of Way

The property is being sold subject to all existing wayleaves, easements and rights of way, whether or not specified within the sales particulars.

Services

Bramble House is served by mains electricity and water. LPG central heating with underfloor heating and radiators. Drainage is to a septic tank shared with a neighbouring property and is fully compliant with UK regulations.

Postcode Council Tax EPC Tenure

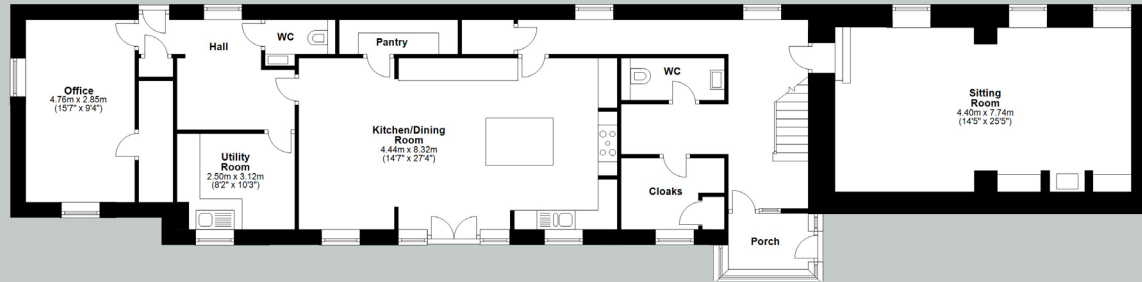
CA9 3DD

Band D

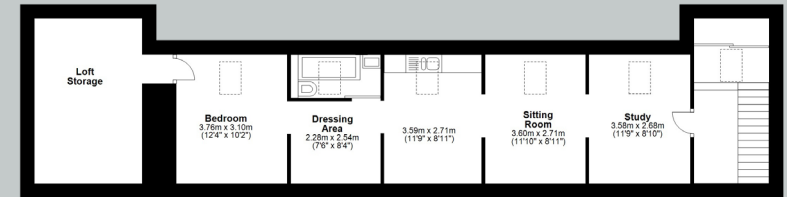
Rating D

Freehold

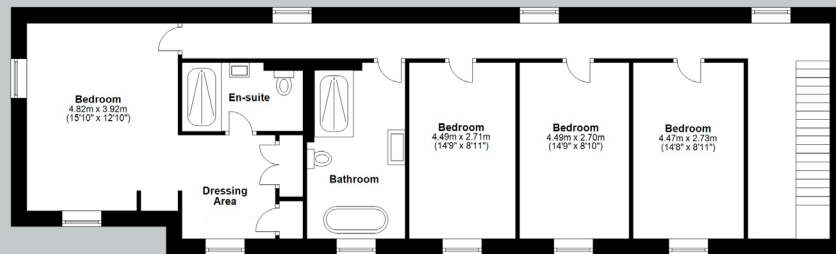
Floor Plans



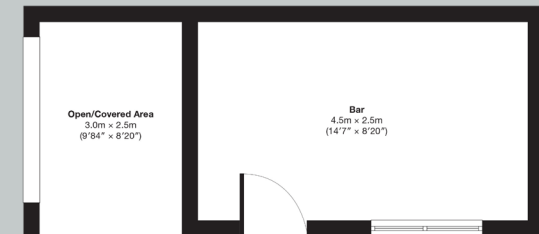
Ground Floor



Second Floor



First Floor



Outbuilding

Total area: approx. 334.0 sq. metres (3594.7 sq. feet)

Finest
PROPERTIES

Viewings Strictly by Appointment



finest.co.uk

15 Market Place | Corbridge | Northumberland | NE45 5AW
0330 111 2266 | contact@finest.co.uk

IMPORTANT INFORMATION Finest Properties, for themselves and for the Vendors and Lessors of this property whose Agents they are give notice that: (1) The particulars are set out as a general outline only for the guidance of intended purchasers or lessees and do not constitute, nor constitute part of, an offer or contract; (2) All descriptions, dimensions, reference to condition and necessary permissions for use and occupation and other details are given without responsibility and any intending purchasers or tenants should not rely on them as statements or representations of fact, but must satisfy themselves by inspection or otherwise as to the correctness of each of them; (3) No person in the employment of Finest Properties, has any authority to make or give any representation or warranty whatever in relation to this property.