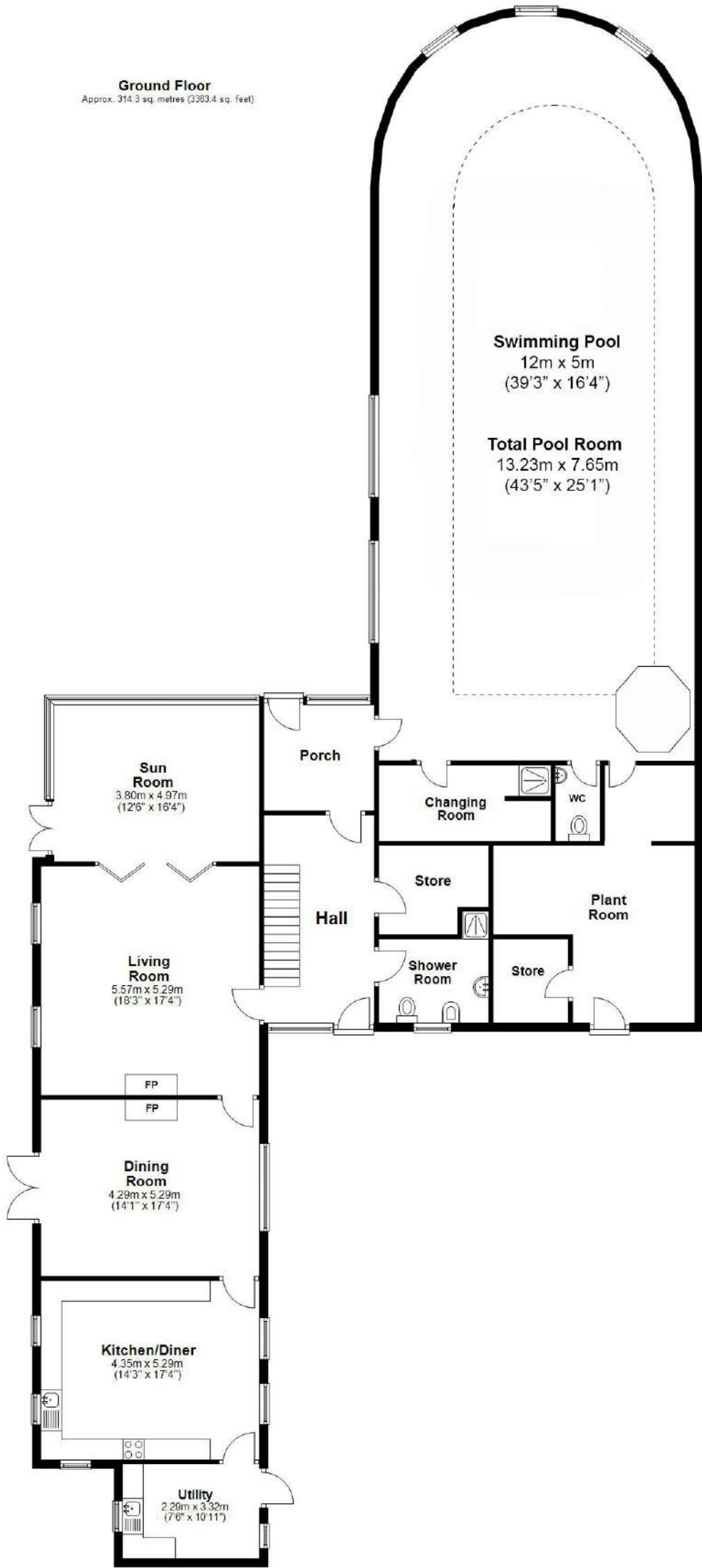


Ground Floor
Approx. 314.3 sq. metres (3383.4 sq. feet)



Total area: approx. 548.8 sq. metres (5907.7 sq. feet)

First Floor

Approx. 118.6 sq. metres (1276.5 sq. feet)



Out Buildings

Approx. 115.9 sq. metres (1247.8 sq. feet)

