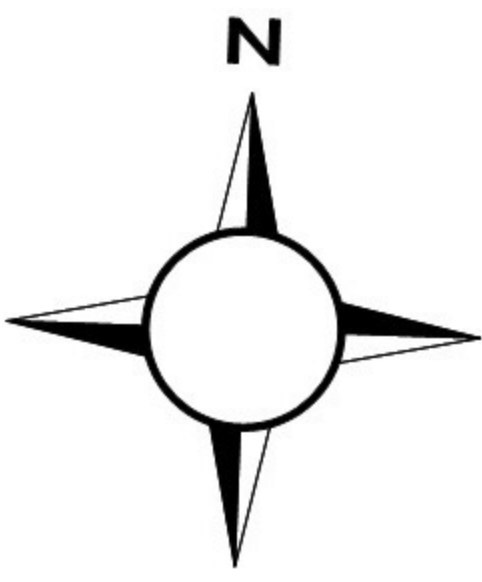


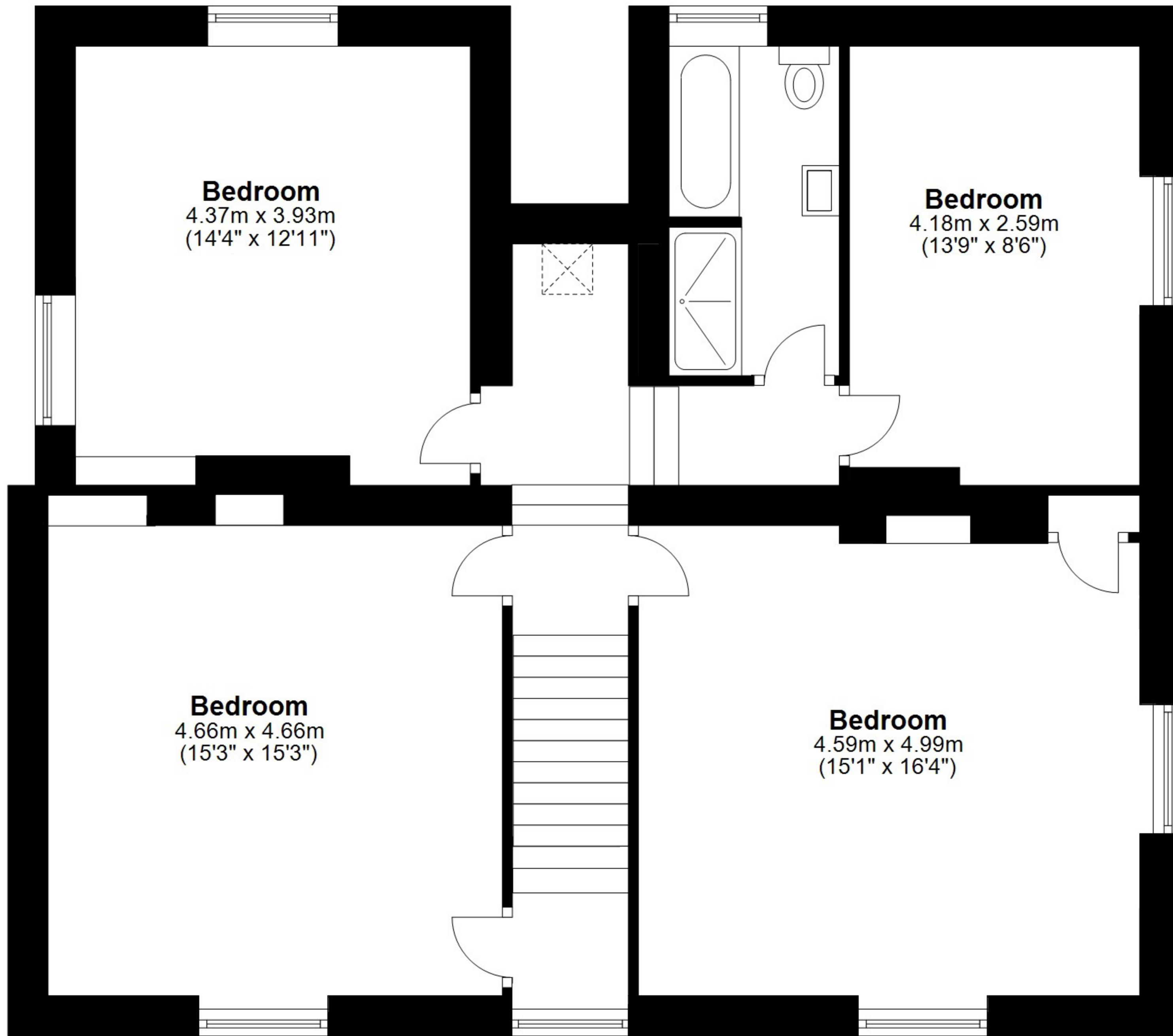
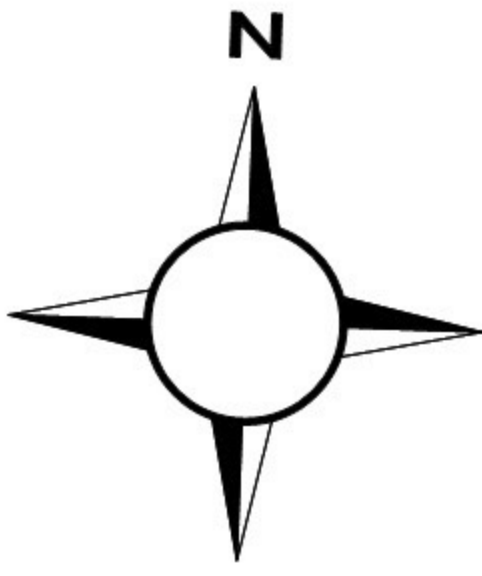
# Hopside Farm, Horsley, Newcastle upon Tyne



House and attached outbuildings total area: 244 sq. metres (2626 sq. feet)

Total area Approx: 365.9 sq. metres (3938 sq. feet)  
(House, Outbuilding, Cowshed & Garage)

# Hopside Farm, Horsley, Newcastle upon Tyne



**Bedroom**  
4.37m x 3.93m  
(14'4" x 12'11")

**Bedroom**  
4.18m x 2.59m  
(13'9" x 8'6")

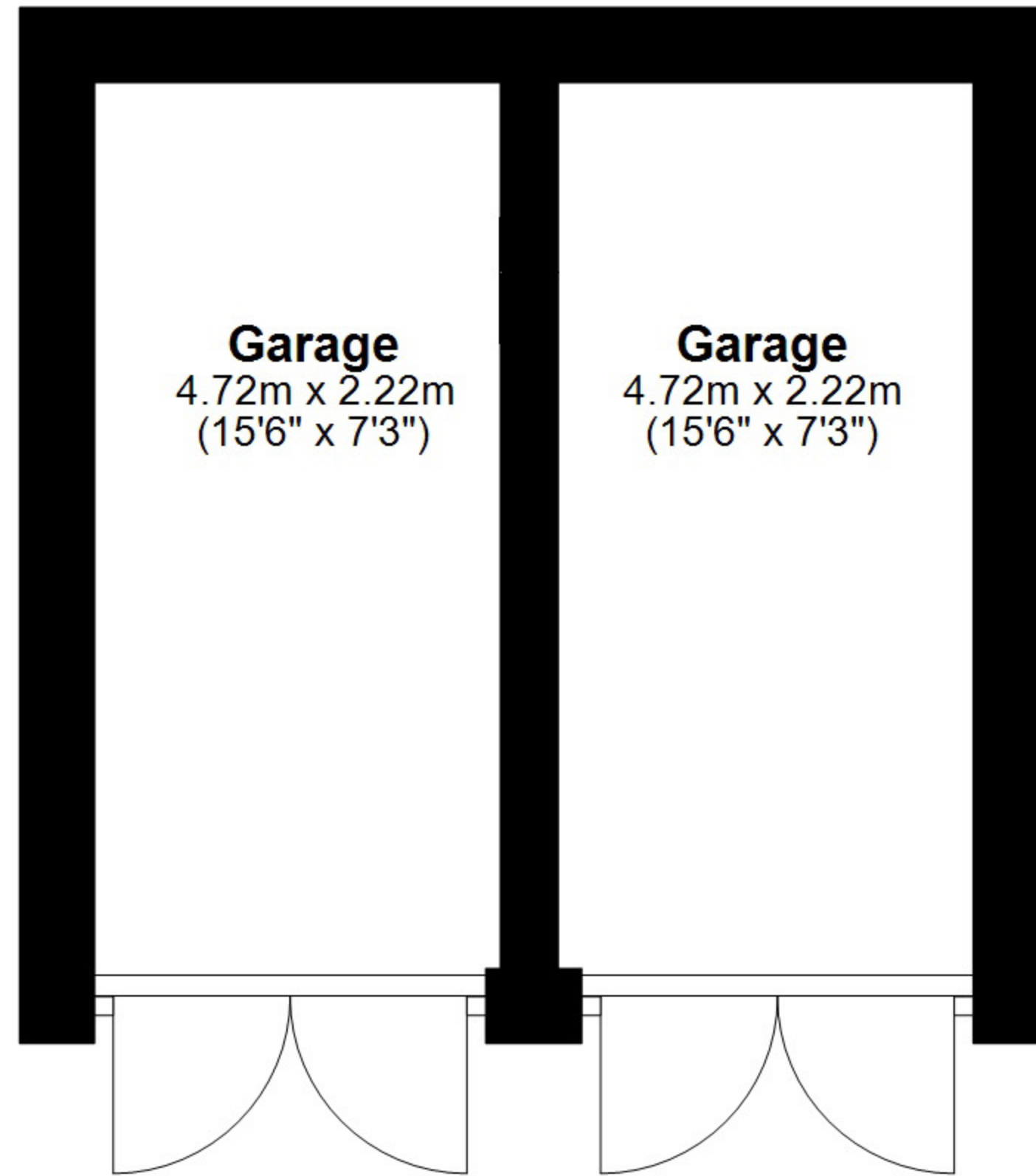
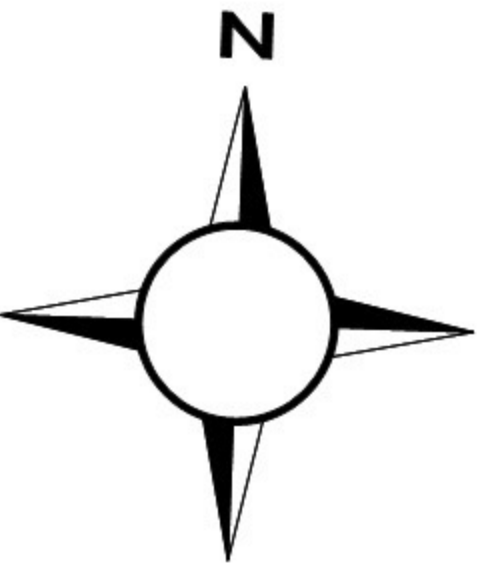
**Bedroom**  
4.66m x 4.66m  
(15'3" x 15'3")

**Bedroom**  
4.59m x 4.99m  
(15'1" x 16'4")

**House and attached outbuildings total area: 244 sq. metres (2626 sq. feet)**

Total area Approx: 365.9 sq. metres (3938 sq. feet)  
(House, Outbuilding, Cowshed & Garage)

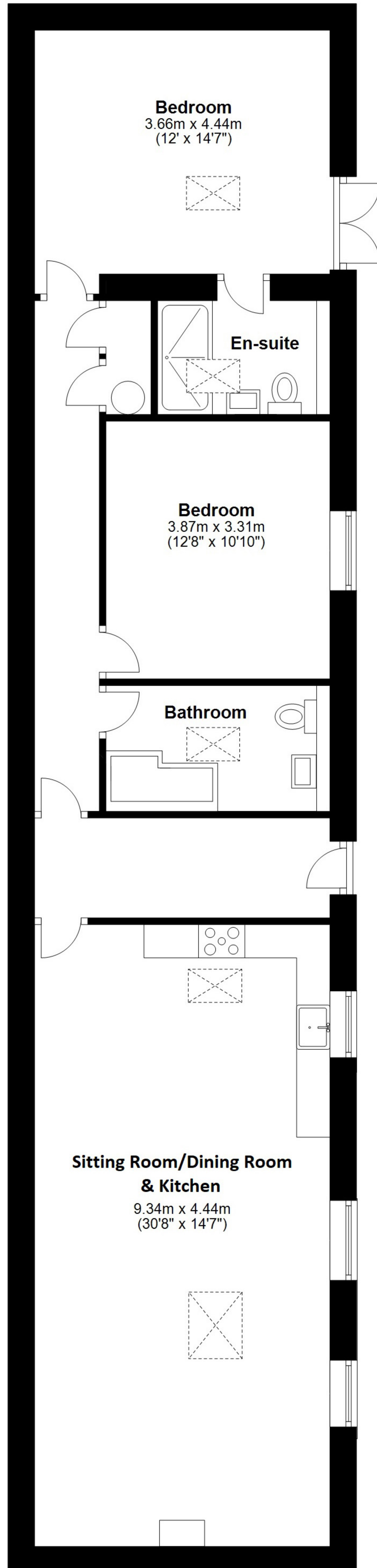
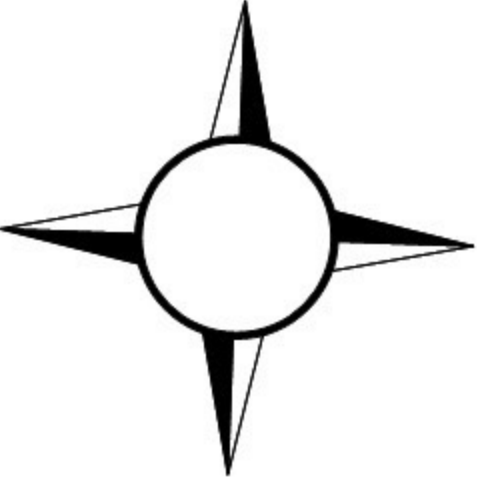
# Hopside Farm, Horsley, Newcastle upon Tyne



**Garage area approx: 21.4 sq. metres (230 sq. feet)**

Total area Approx: 365.9 sq. metres (3938 sq. feet)  
(House, Outbuilding, Cowshed & Garage)

# The Cowshed, Hopside Farm, Horsley, Newcastle upon Tyne <sup>N</sup>



**Cowshed area approx: 100.5 sq. metres (1082 sq. feet)**

Total area Approx: 365.9 sq. metres (3938 sq. feet)  
(House, Outbuilding, Cowshed & Garage)