

Consett | County Durham

81 Villa Real Road



# “An elegant Victorian detached house with contemporary interiors and seamless indoor-outdoor living”

## The Property

Set behind electric gates this detached five-bedroom period house combines elegant original architecture with striking contemporary extensions. The traditional frontage gives way to interiors that retain a sense of grandeur while embracing modern design.

On entering through the front door, you are welcomed into a broad hallway where high ceilings, ornate plasterwork and a graceful staircase immediately convey the character and scale of the home. To either side, the reception rooms showcase tall bay windows, decorative plasterwork and feature fireplaces, creating versatile spaces for both formal and relaxed occasions.

To the left, the drawing room offers a bold interpretation of period style. Deep teal walls frame a polished black fireplace, while the generous bay window brings a bright balance to the rich palette. Across the hallway, a refined sitting room showcases the home’s period detailing, with ornate coving, a decorative ceiling rose and a polished fireplace. The tall bay window floods the room with natural light, highlighting the soft palette and elegant proportions, making it ideally suited for formal entertaining or quiet evenings. Adjacent, the snug provides a more relaxed, informal setting. Deep blue paneling frames the television with concealed shelving to either side, combining a streamlined aesthetic with discreet, practical storage. A large window brightens the space, softening the bold tones and creating a welcoming atmosphere. The space combines style with everyday practicality, making it ideally suited for use as a family snug, media room or an intimate entertaining space.



From the entrance hall, a graceful archway leads into a broad vestibule, creating a natural transition from the formal reception spaces to the more contemporary heart of the home. To the left, the vestibule opens directly into the kitchen, where sleek cabinetry and a central island are framed by wide-format floor tiles that continue throughout, unifying the flow. Bi-fold doors span one side of the kitchen, opening directly to the garden and enhancing the connection between indoors and out.

Beyond the kitchen, the house unfolds into the striking new addition, designed as a sequence of light-filled entertaining spaces. The living and dining area is defined by vaulted ceilings and bi-fold doors to both sides, flooding the space with natural light and providing an exceptional setting for indoor-outdoor living. From here, the layout extends to the games room, a conversion of the former detached garage, now complete with a fully equipped bar and another set of bi-fold doors leading to the terrace. Together, these interlinked spaces create a versatile environment for entertaining on any scale, seamlessly connected to the garden.

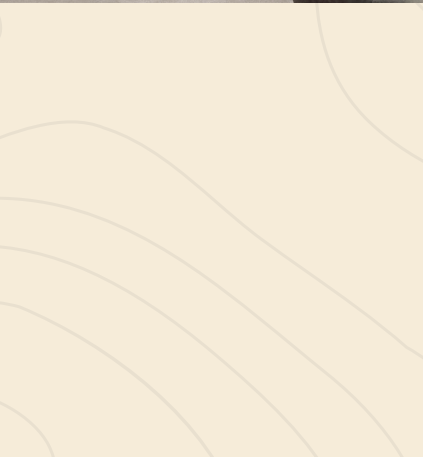
Upstairs, the principal suite is a showcase of scale and elegance, with tall sash windows overlooking the gardens and allowing natural light to pour across the room. A dramatic full-height upholstered headboard forms a striking centrepiece, set against textured wall finishes that lend depth and sophistication. The suite benefits from a dedicated walk-in wardrobe, providing generous





hanging and storage space in addition to the room's already impressive proportions. Its en-suite bathroom continues the theme of refined design, finished in large-format marble-effect porcelain tiles that create a seamless, contemporary look. A walk-in rainfall shower with matt black fittings takes centre stage, complemented by a floating double vanity with integrated storage and twin framed mirrors. The result is a sleek yet inviting space designed for both everyday practicality and indulgent relaxation.

Three further bedrooms are arranged with flexibility for family or guests, each individually styled with statement headboards, fitted storage and bold interior design. These are complemented by two separate bathrooms. One features a rainfall shower, contemporary tiling and chrome fittings, while the other is fitted with a bath and integrated waterproof TV, designed for restful evenings.



A short flight of tiered steps leads to a separate level, where a fully fitted dressing room and an additional study provide valuable space for home working and everyday practicality. The dressing room is beautifully appointed with bespoke cabinetry, a built-in dressing table and a cushioned window seat, creating a bright and practical space designed for everyday ease.

Google Maps

what3words



/// hears.energetic.vocal

## Wayleaves, Easements & Rights of Way

The property is being sold subject to all existing wayleaves, easements and rights of way, whether or not specified within the sales particulars.

## Services

Gas boiler, mains water and electricity..



Postcode    Council Tax    EPC    Tenure

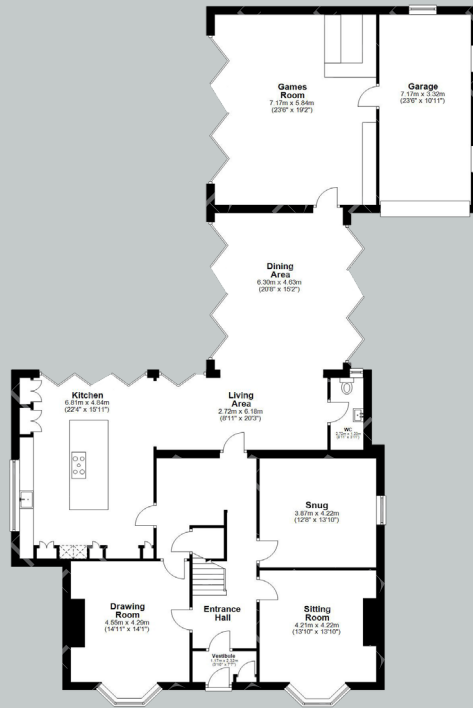
DH8 6BL

Band F

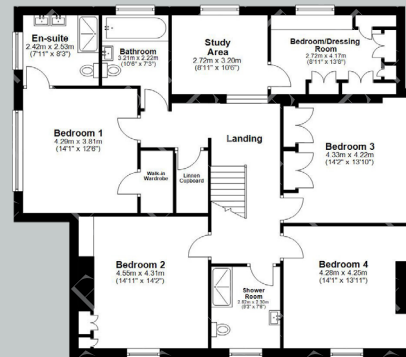
Rating D

Freehold

# Floor Plans



Ground Floor



First Floor



Gym



Outdoor Dining Area

Total area: approx. 428.6 sq. metres (4612.9 sq. feet)

# Finest

PROPERTIES

Viewings Strictly by Appointment



[finest.co.uk](http://finest.co.uk)

15 Market Place | Corbridge | Northumberland | NE45 5AW  
0330 111 2266 | [contact@finest.co.uk](mailto:contact@finest.co.uk)

**IMPORTANT INFORMATION** Finest Properties, for themselves and for the Vendors and Lessors of this property whose Agents they are give notice that: (1) The particulars are set out as a general outline only for the guidance of intended purchasers or lessees and do not constitute, nor constitute part of, an offer or contract; (2) All descriptions, dimensions, reference to condition and necessary permissions for use and occupation and other details are given without responsibility and any intending purchasers or tenants should not rely on them as statements or representations of fact, but must satisfy themselves by inspection or otherwise as to the correctness of each of them; (3) No person in the employment of Finest Properties, has any authority to make or give any representation or warranty whatever in relation to this property.