

Finest
PROPERTIES

finest.co.uk

Welton | Northumberland

The March Barn



“A beautifully executed contemporary barn conversion with uninterrupted Tyne Valley views”

The Property

Set in a peaceful rural setting with far-reaching views across open countryside, The March Barn is a striking stone-built conversion clad in local stone and designed to sit comfortably within its surroundings. Extending to over 3,300 sq. ft. of single-storey living space, the layout includes four bedrooms, a study, a gym, and a substantial open-plan kitchen, dining and living area at its core. A private courtyard, landscaped gardens and a large agricultural-style outbuilding add further appeal, making this an impressive yet understated property well suited to a discerning buyer seeking space, privacy and comfort

Finished to a high standard throughout, the interior combines natural stone and timber to create a grounded, organic feel. Deep-set windows and vaulted ceilings enhance the sense of light and space, while underfloor heating runs throughout the property. A full-height glazed entrance introduces a tactile material palette that continues inside through stone flooring, exposed beams and muted, earthy tones. The expansive kitchen, dining and family room is the central space, arranged around a bespoke Neptune kitchen with Corian worktops and integrated appliances. A large island provides a natural anchor to the space, which flows through clearly defined dining and seating areas. An array of windows frames far-reaching countryside views and brings in natural light throughout the day, while sliding doors open directly onto the south-facing courtyard.



Beyond the kitchen, a more intimate sitting room with a vaulted ceiling and wood-burning stove offers a relaxed, quieter space, with bi-fold doors opening directly to the outside and offering a wide-angle connection to the surrounding landscape. A study sits nearby, along with a boot room and utility room providing practical support to the main living areas. There is also a guest WC off the hallway.

The principal bedroom lies at the far end of the house, enjoying direct access to the courtyard and open views across the valley. Adjacent to it, a fully equipped gym includes rubber flooring, mirrored walls, glazed doors opening onto the terrace, and its own private en-suite shower room. Two further double bedrooms are arranged along the hallway, each with its own en-suite bathroom, one of which also benefits from a dedicated dressing room. A beautifully styled family bathroom is located nearby, finished with verdigris green porcelain tiling, a freestanding copper bath, a large walk-in rain shower and a built-in sauna, creating a spa-like atmosphere with a distinct design focus. Bathrooms throughout the property feature multiple rain showers and high-quality fittings, all finished with a focus on comfort and design. The fourth bedroom lies to the opposite end of the house and is well suited as a guest suite or quiet retreat. Deep blue walls, vaulted ceilings with exposed beams and a natural stone floor lend the space a cocooning, luxurious feel, while a freestanding claw-foot bath adds to its appeal.





Google Maps

what3words



///palms.bend.quilt

Wayleaves, Easements & Rights of Way

The property is being sold subject to all existing wayleaves, easements and rights of way, whether or not specified within the sales particulars.

Services

The March Barn is connected to mains electricity and water, with drainage via a shared private treatment plant. Heating and hot water are provided by a combination of a log and pellet biomass boiler, supporting the underfloor heating system throughout.

Postcode Council Tax EPC Tenure

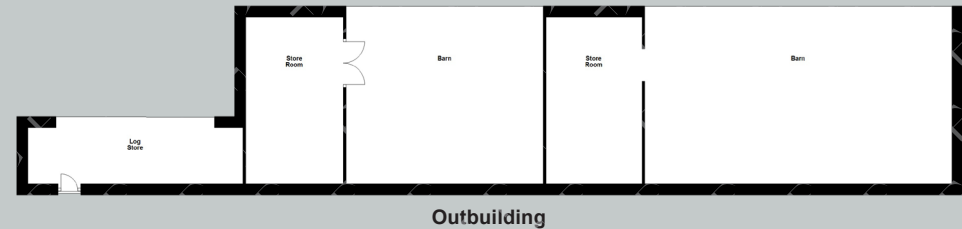
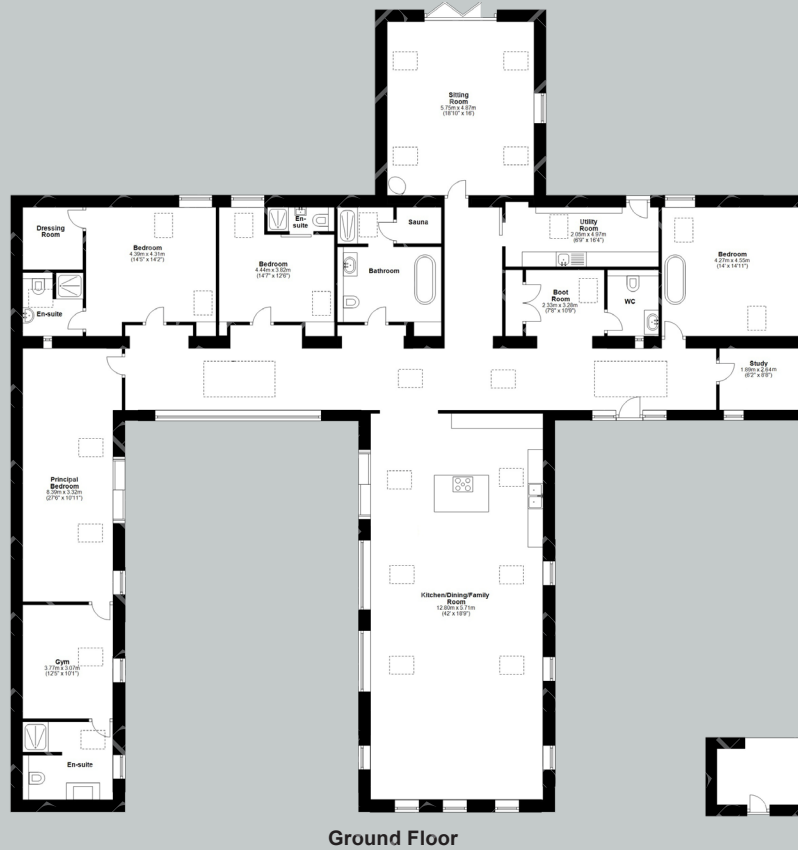
NE18 0LJ

Band F

Rating C

Freehold

Floor Plans



Total area: approx. 314.6 sq. metres (3386.8 sq. feet)

Finest

PROPERTIES

Viewings Strictly by Appointment



finest.co.uk

15 Market Place | Corbridge | Northumberland | NE45 5AW
0330 111 2266 | contact@finest.co.uk

IMPORTANT INFORMATION Finest Properties, for themselves and for the Vendors and Lessors of this property whose Agents they are give notice that: (1) The particulars are set out as a general outline only for the guidance of intended purchasers or lessees and do not constitute, nor constitute part of, an offer or contract; (2) All descriptions, dimensions, reference to condition and necessary permissions for use and occupation and other details are given without responsibility and any intending purchasers or tenants should not rely on them as statements or representations of fact, but must satisfy themselves by inspection or otherwise as to the correctness of each of them; (3) No person in the employment of Finest Properties, has any authority to make or give any representation or warranty whatever in relation to this property.