

Tallentire | Cockermouth | Cumbria

Midtown Farm



“A traditional detached Grade II Listed farmhouse nestled in a peaceful Cumbrian village ”

The Property

Tucked away in the heart of Tallentire, Midtown Farm is a characterful Grade II Listed, period property with generous attached barns, offering a rare combination of historic charm, versatile accommodation and exciting future potential. The house has been thoughtfully updated to create light, welcoming interiors, while retaining the texture and warmth of its original fabric.

The ground floor is arranged to balance everyday comfort with generous entertaining space. A wide L-shaped living room spans the depth of the house, its exposed beams and substantial stone fireplace framing an inviting wood-burning stove. This space flows naturally into a bright seating area, with French doors opening directly onto the terrace and gardens beyond.

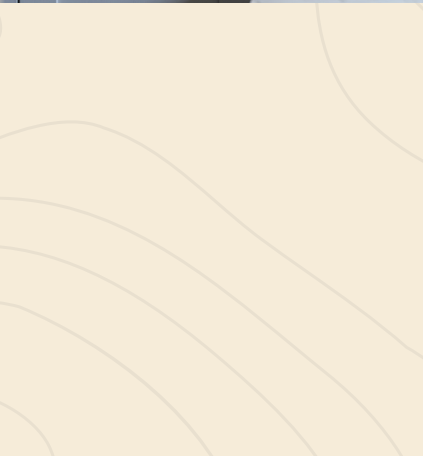
Across the hall, the dining room is a more formal setting, enhanced by period detailing and rustic beams, ideal for both family gatherings and dinner parties.

The kitchen has been styled with contemporary cabinetry, pale work surfaces and integrated appliances, softened by open shelving. A large window draws the garden into the room, while the adjacent utility offers practical space for laundry and storage alongside a boot room entrance.



Upstairs, four bedrooms are arranged around a central landing. The principal suite is a highlight, combining generous proportions with a walk-through dressing room and a striking en-suite bathroom complete with twin vanity, walk-in rainfall shower and a deep, inset bath. The further bedrooms, two of which are doubles, are served by a stylish family bathroom featuring a claw-foot





Google Maps

what3words



[//seagulls.impeached.trip](https://seagulls.impeached.trip)

Wayleaves, Easements & Rights of Way

The property is being sold subject to all existing wayleaves, easements and rights of way, whether or not specified within the sales particulars.

Services

Mains electricity, water and drains. Oil central heating.

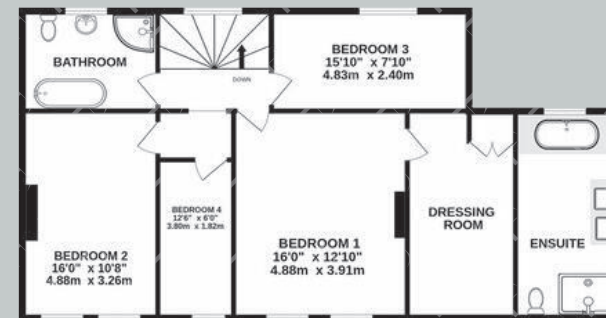
Postcode	Council Tax	EPC	Tenure
CA13 0PT	Band D	Rating E	Freehold



Floor Plans



Ground Floor



First Floor

Total area: approx. 301.2 sq. metres (3242 sq. feet)

Finest

PROPERTIES

Viewings Strictly by Appointment



[finest.co.uk](https://www.finest.co.uk)

15 Market Place | Corbridge | Northumberland | NE45 5AW
0330 111 2266 | contact@finest.co.uk

IMPORTANT INFORMATION Finest Properties, for themselves and for the Vendors and Lessors of this property whose Agents they are give notice that: (1) The particulars are set out as a general outline only for the guidance of intended purchasers or lessees and do not constitute, nor constitute part of, an offer or contract; (2) All descriptions, dimensions, reference to condition and necessary permissions for use and occupation and other details are given without responsibility and any intending purchasers or tenants should not rely on them as statements or representations of fact, but must satisfy themselves by inspection or otherwise as to the correctness of each of them; (3) No person in the employment of Finest Properties, has any authority to make or give any representation or warranty whatever in relation to this property.