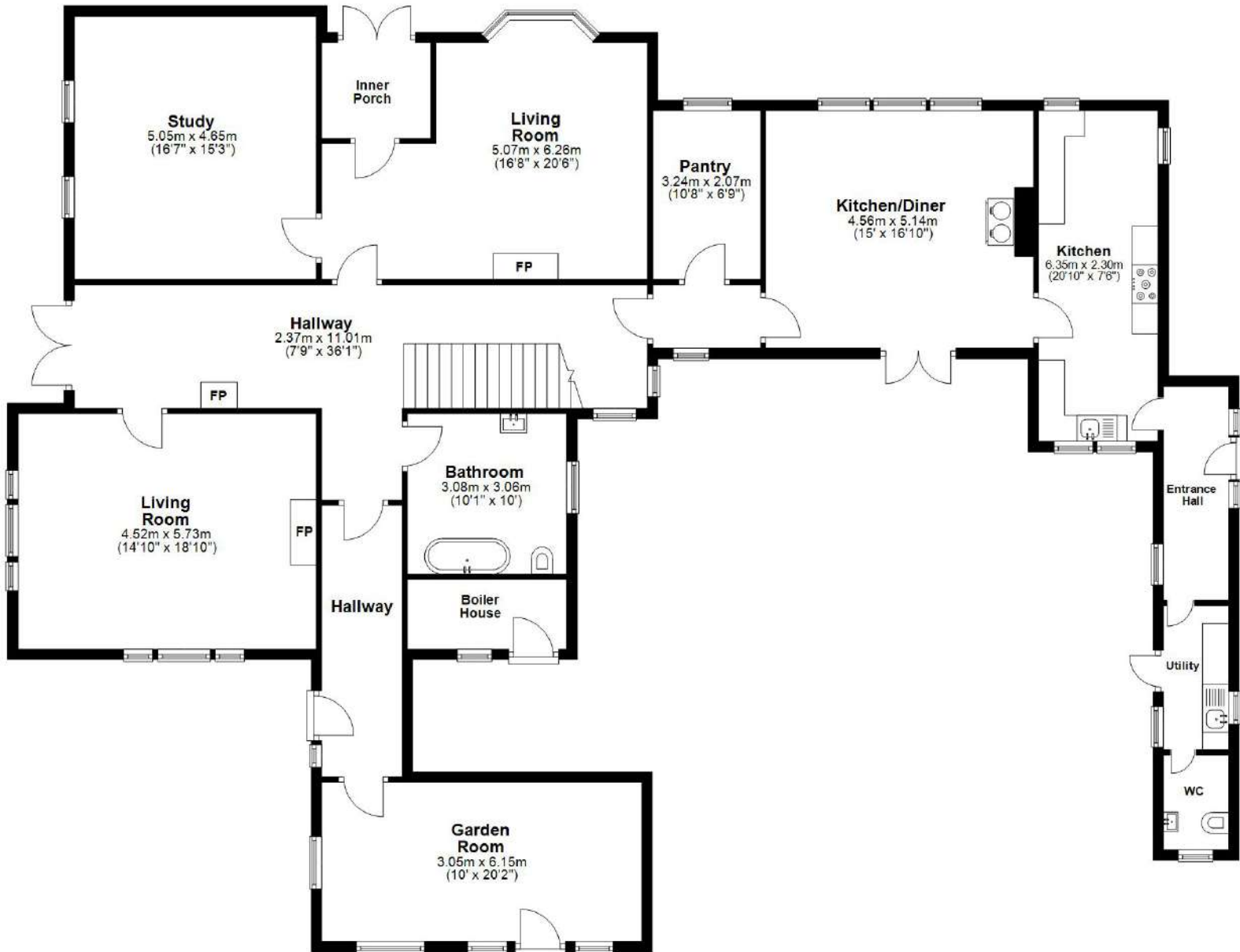


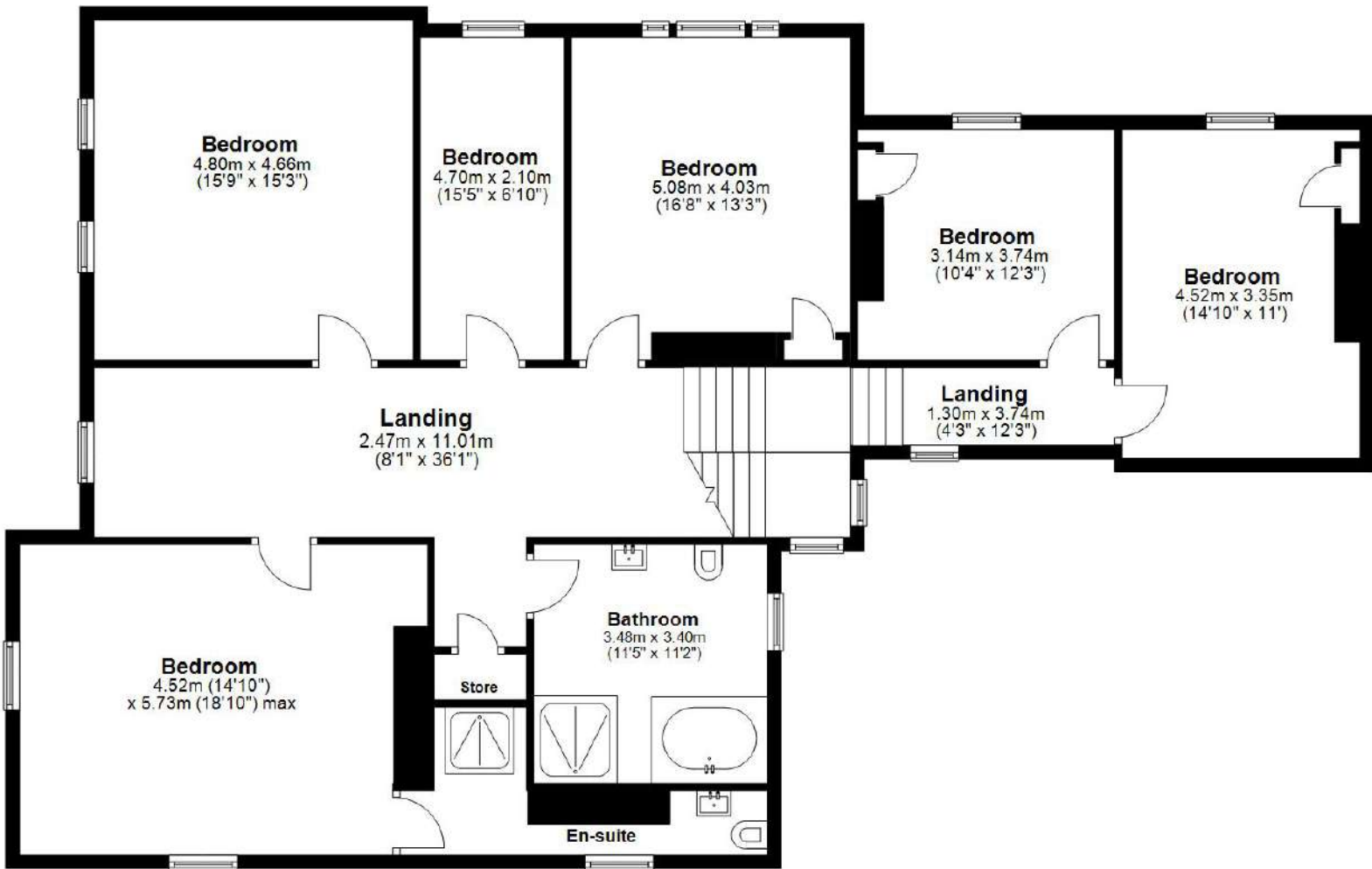
Ground Floor

Approx. 214.1 sq. metres (2304.8 sq. feet)



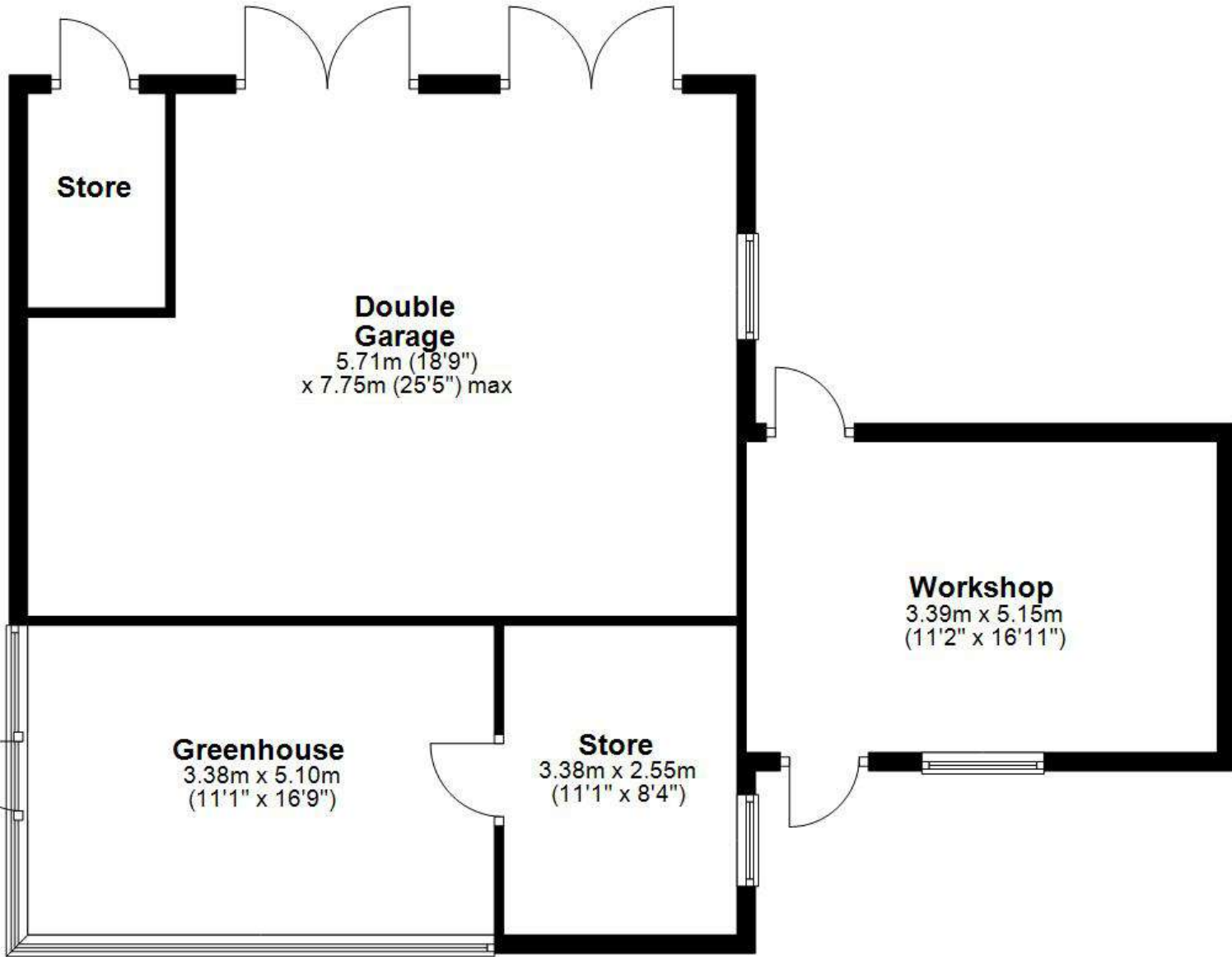
First Floor

Approx. 164.4 sq. metres (1770.0 sq. feet)



Out Buildings

Approx. 89.0 sq. metres (957.8 sq. feet)



Total area: approx. 467.6 sq. metres (5032.7 sq. feet)