

# Finest

PROPERTIES

[finest.co.uk](http://finest.co.uk)

Corbridge | Northumberland

14 Wating Street



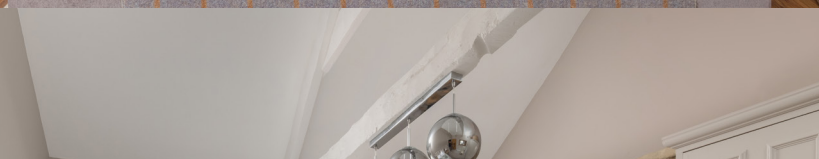
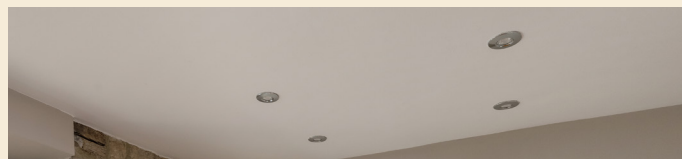
# “A beautifully refurbished Grade II Listed stone-built cottage in the heart of historic Corbridge”

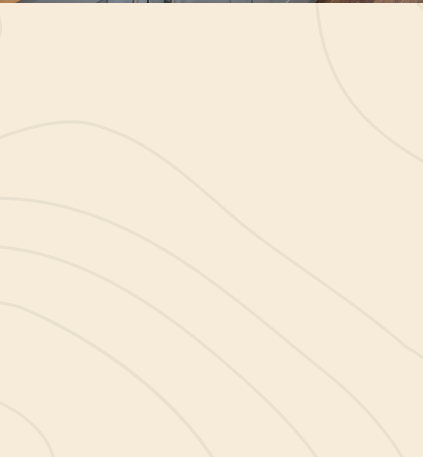
## The Property

Set in the historic heart of Corbridge, 14 Watling Street is a charming stone-built Grade II Listed cottage positioned within easy walking distance of the village's independent shops, cafés and riverside walks. Extensively refurbished, it offers generous living accommodation arranged with an easy, modern flow while retaining traditional character, including exposed stonework and sash windows.

The front door opens into a remarkably spacious sitting room, a welcoming space for relaxed evenings or informal entertaining. Painted beams draw the eye upward and add a refined, contemporary finish, while a period fireplace forms a natural focal point, and built-in storage offers practical appeal. Beyond, the kitchen and dining area extend across the rear of the house, combining Shaker-style cabinetry in generous supply with warm timber worktops and integrated appliances including an oven with gas hob, extractor, washing machine and dishwasher. The dining area sits beside a feature wall of exposed stone, creating a charming setting for meals, and a door opens directly from here to the rear terrace.

Upstairs, three double bedrooms are decorated in calm, neutral tones and enjoy good natural light. The principal bedroom is generously sized, with a vaulted ceiling, painted trusses and a statement stone chimney breast with a fireplace, together with fitted cupboards for organised storage. The second double bedroom sits alongside, and the third is equally versatile, readily adapted as a study, nursery or dressing room as required. The shower room has been renovated in a contemporary style, with a wide glazed enclosure, patterned tiling and a rainfall shower.





Google Maps

what3words



///zoomed.affair.detriment

## Wayleaves, Easements & Rights of Way

The property is being sold subject to all existing wayleaves, easements and rights of way, whether or not specified within the sales particulars.

## Services

The property is connected to mains electricity, gas, water and drainage, and benefits from gas-fired central heating.

Postcode    Council Tax    EPC    Tenure

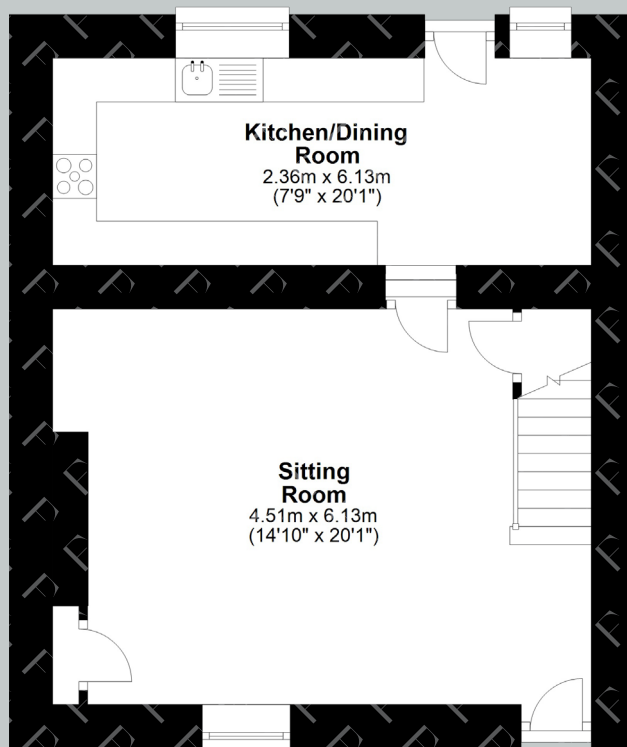
NE45 5AH

Band C

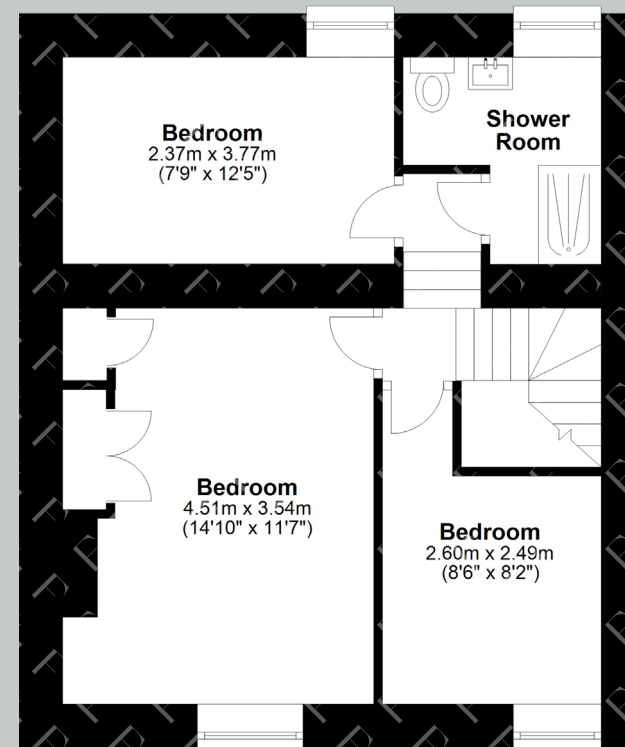
Rating TBC

Freehold

# Floor Plans



Ground Floor



First Floor

Total area: approx. 90.4 sq. metres (973.2 sq. feet)

**Finest**  
PROPERTIES

Viewings Strictly by Appointment



[finest.co.uk](http://finest.co.uk)

15 Market Place | Corbridge | Northumberland | NE45 5AW  
0330 111 2266 | [contact@finest.co.uk](mailto:contact@finest.co.uk)

**IMPORTANT INFORMATION** Finest Properties, for themselves and for the Vendors and Lessors of this property whose Agents they are give notice that: (1) The particulars are set out as a general outline only for the guidance of intended purchasers or lessees and do not constitute, nor constitute part of, an offer or contract; (2) All descriptions, dimensions, reference to condition and necessary permissions for use and occupation and other details are given without responsibility and any intending purchasers or tenants should not rely on them as statements or representations of fact, but must satisfy themselves by inspection or otherwise as to the correctness of each of them; (3) No person in the employment of Finest Properties, has any authority to make or give any representation or warranty whatever in relation to this property.