

Somer Barns, Camp Lane, Great Witley, Worcester, WR6 6JQ

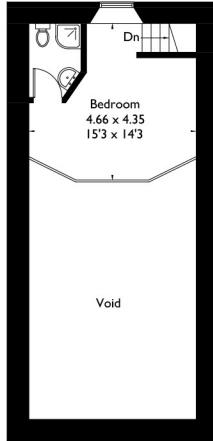
Approximate Gross Internal Area = 212.1 sq m / 2283 sq ft

(Excluding Void / Log Store)

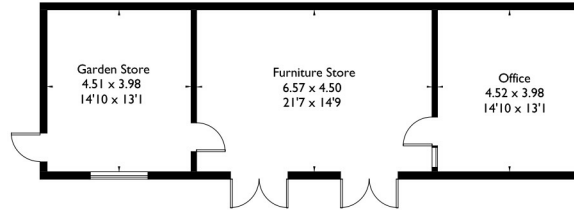
Outbuilding = 106.5 sq m / 1146 sq ft

Garage = 15.6 sq m / 168 sq ft

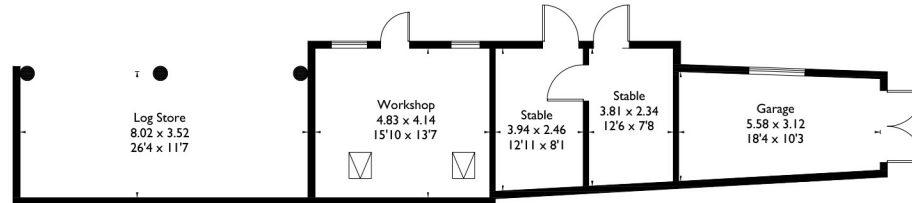
Total = 334.2 sq m / 3597 sq ft



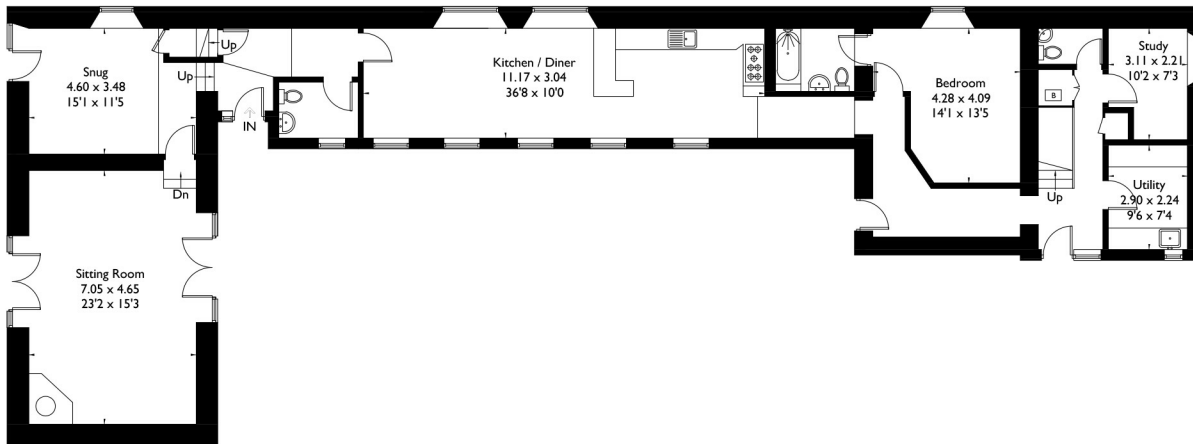
First Floor



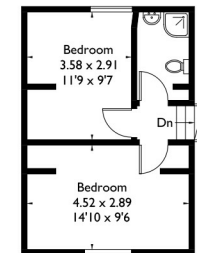
(Not Shown In Actual Location / Orientation)



(Not Shown In Actual Location / Orientation)



Ground Floor



First Floor

FLOORPLANZ © 2017 0203 9056099 Ref: 183806

This plan is for layout guidance only. Drawn in accordance with RICS guidelines. Not drawn to scale unless stated. Windows & door openings are approximate. Whilst every care is taken in the preparation of this plan, please check all dimensions, shapes & compass bearings before making any decisions reliant upon them.