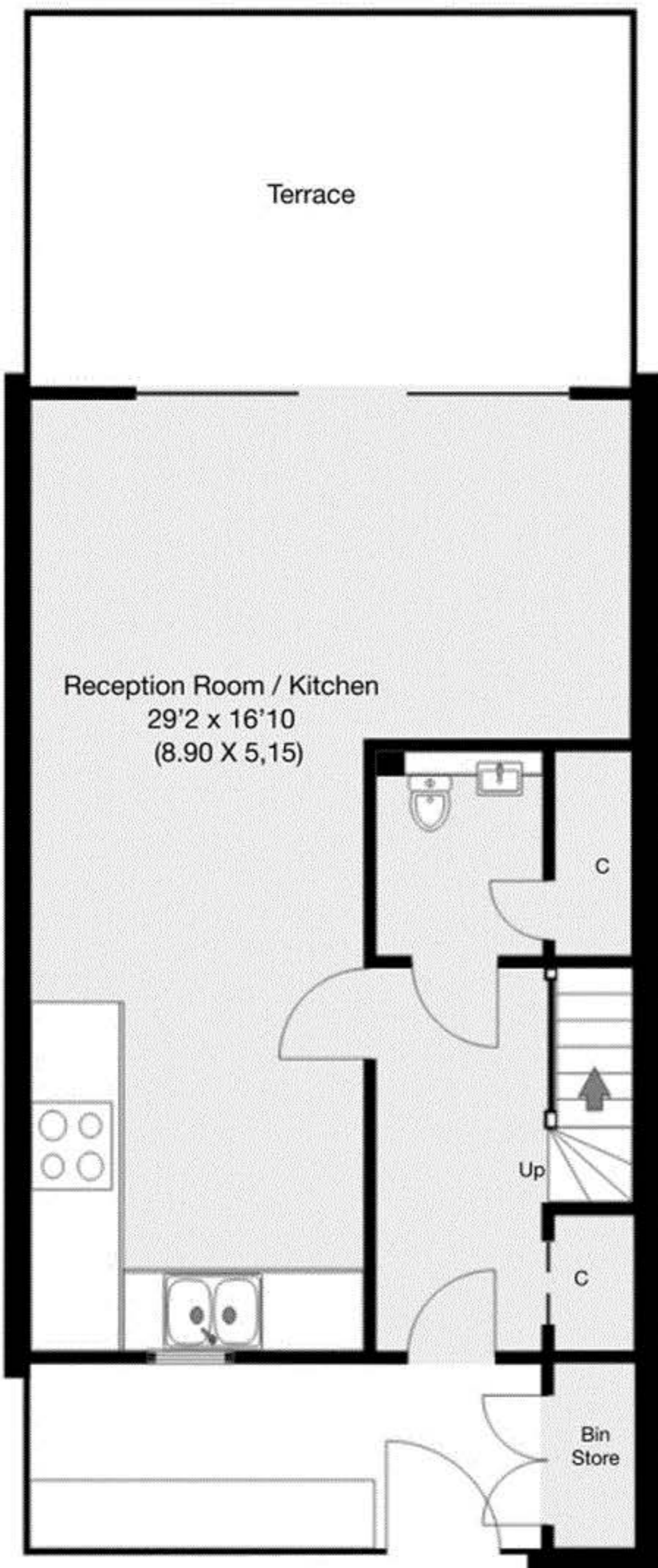




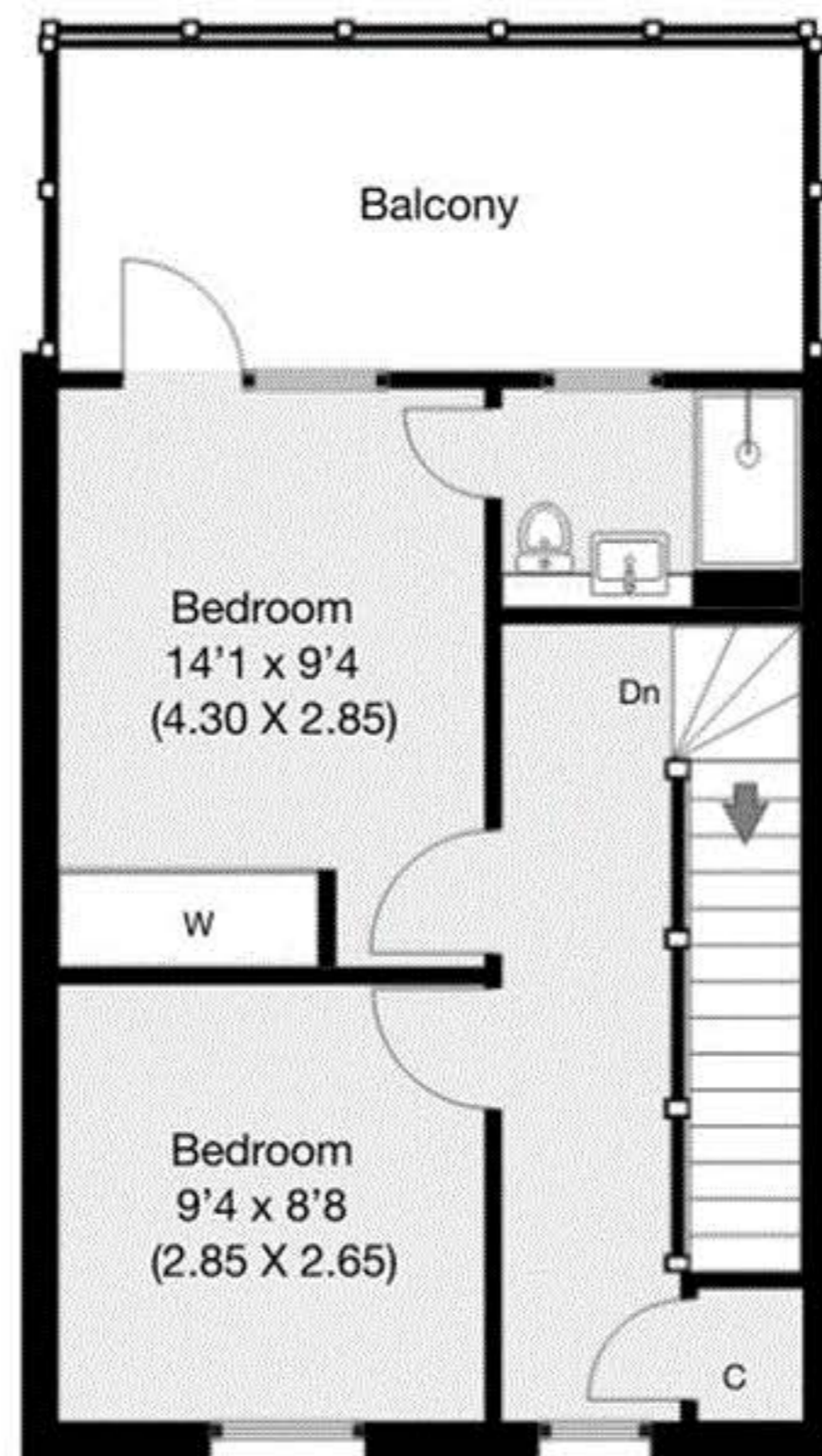
# Saint Ann's Road, London, N15

Approximate Gross Internal Area 120 sqm / 1292 sqft

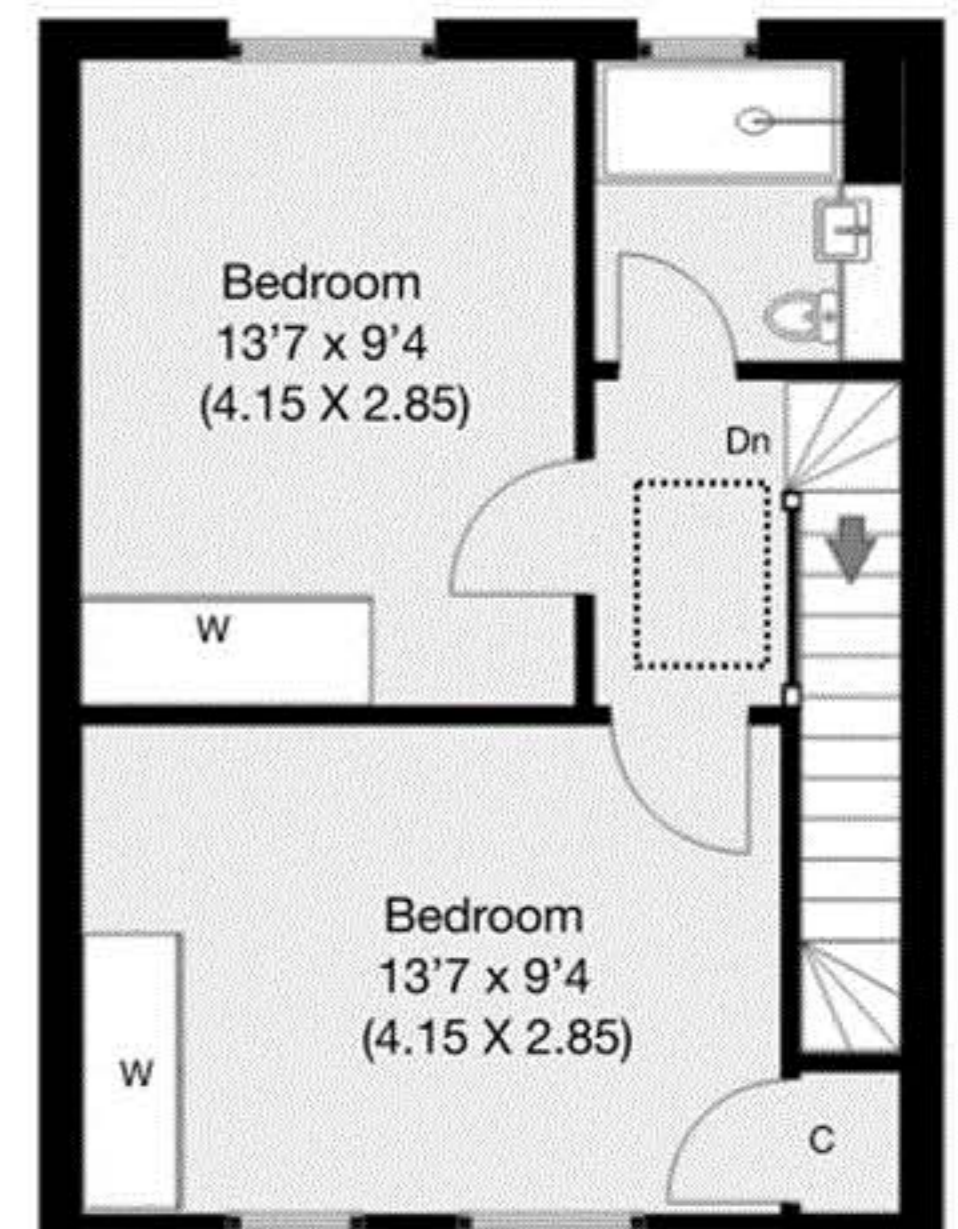
Approximate External Area 57 sqm / 614 sqft



Ground Floor



First Floor



Second Floor

THIS FLOOR PLAN IS PRODUCED FOR GARRISON ESTATES SUBMITTED BY ARCHIMEDIA web: [www.archi-media.co.uk](http://www.archi-media.co.uk)

Whilst every attempt has been made to ensure the accuracy of the floor plan contained here, measurements of doors, windows and rooms are approximate and no responsibility is taken for any error, omission or misstatement. These plans are for representation purposes only and should be used as such by any prospective buyer or lease. Specifically no guarantee is given on the gross internal floor area of the property if quoted on this plan and any figures given is initial guidance only and should be treated as such.