

Family Bathroom
6.1m x 3.25m
(20'0" x 10'6")

Living Room
4.32m x 3.84m
(14'1" x 29'0")

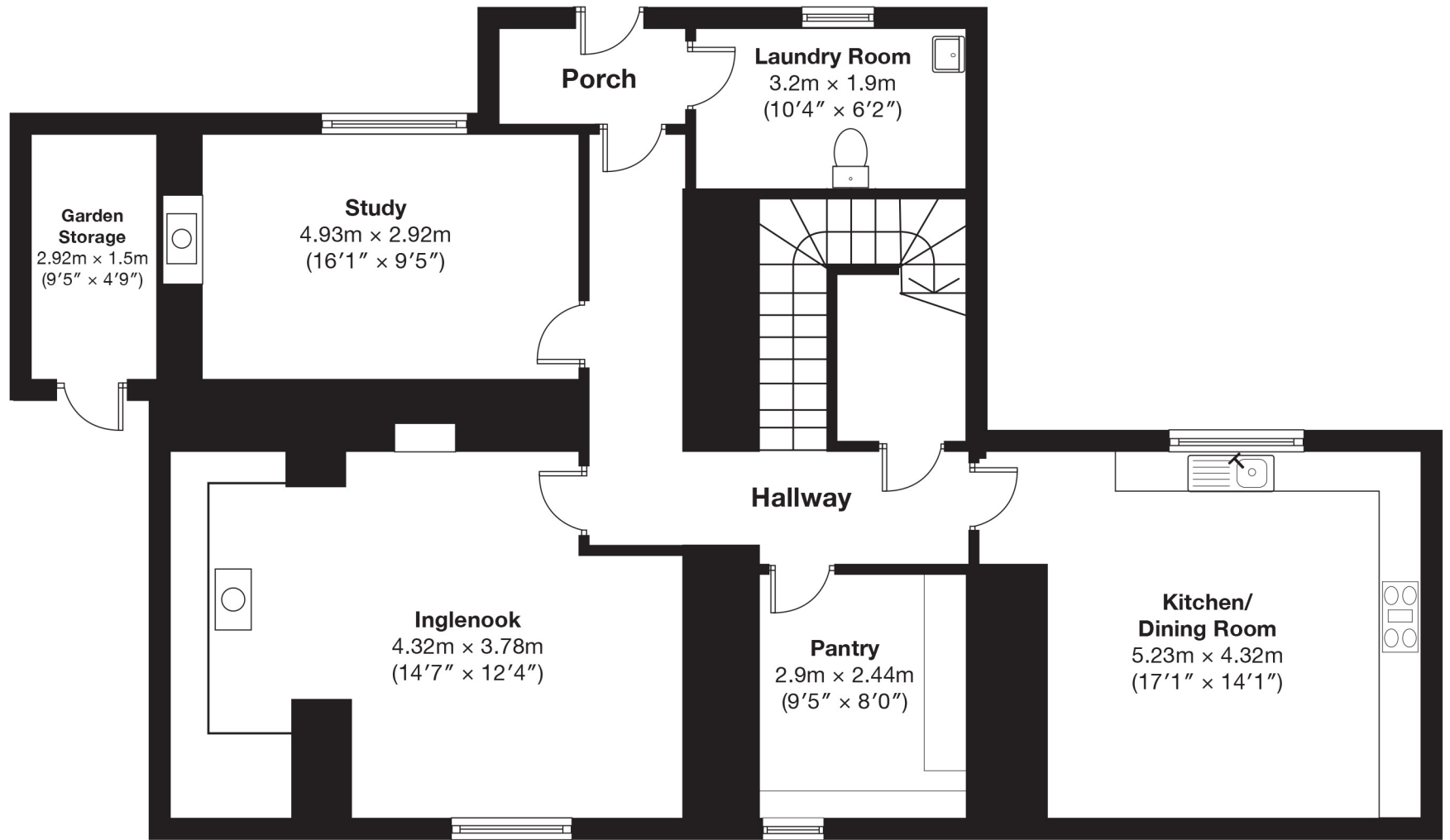
Entrance Hall
7.32m x 2.44m
(24'0" x 8'0")

En-suite
1.78m x 1.73m
(5'8" x 5'6")

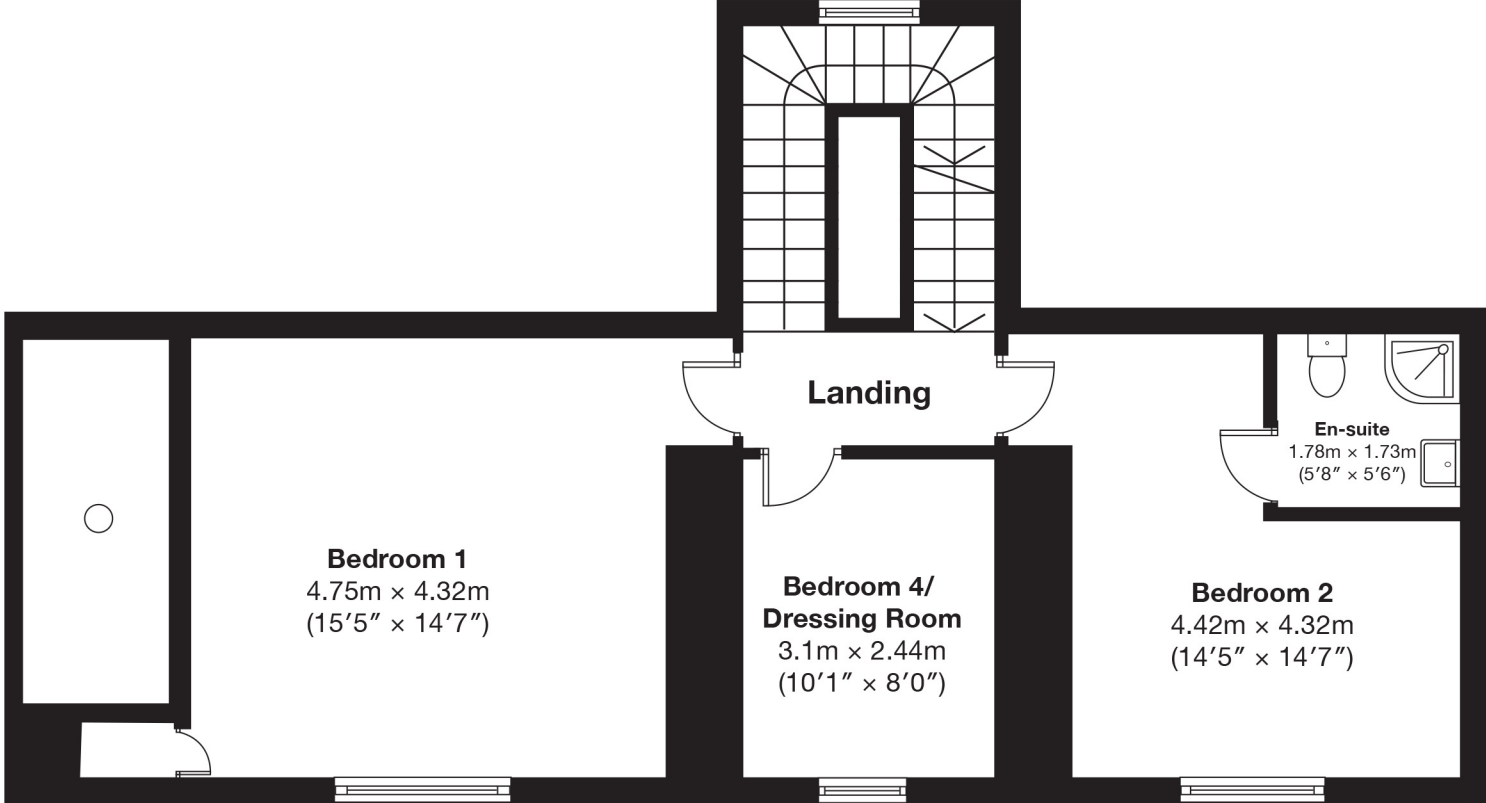
Bedroom 3
4.42m x 4.32m
(14'5" x 14'7")

Porch

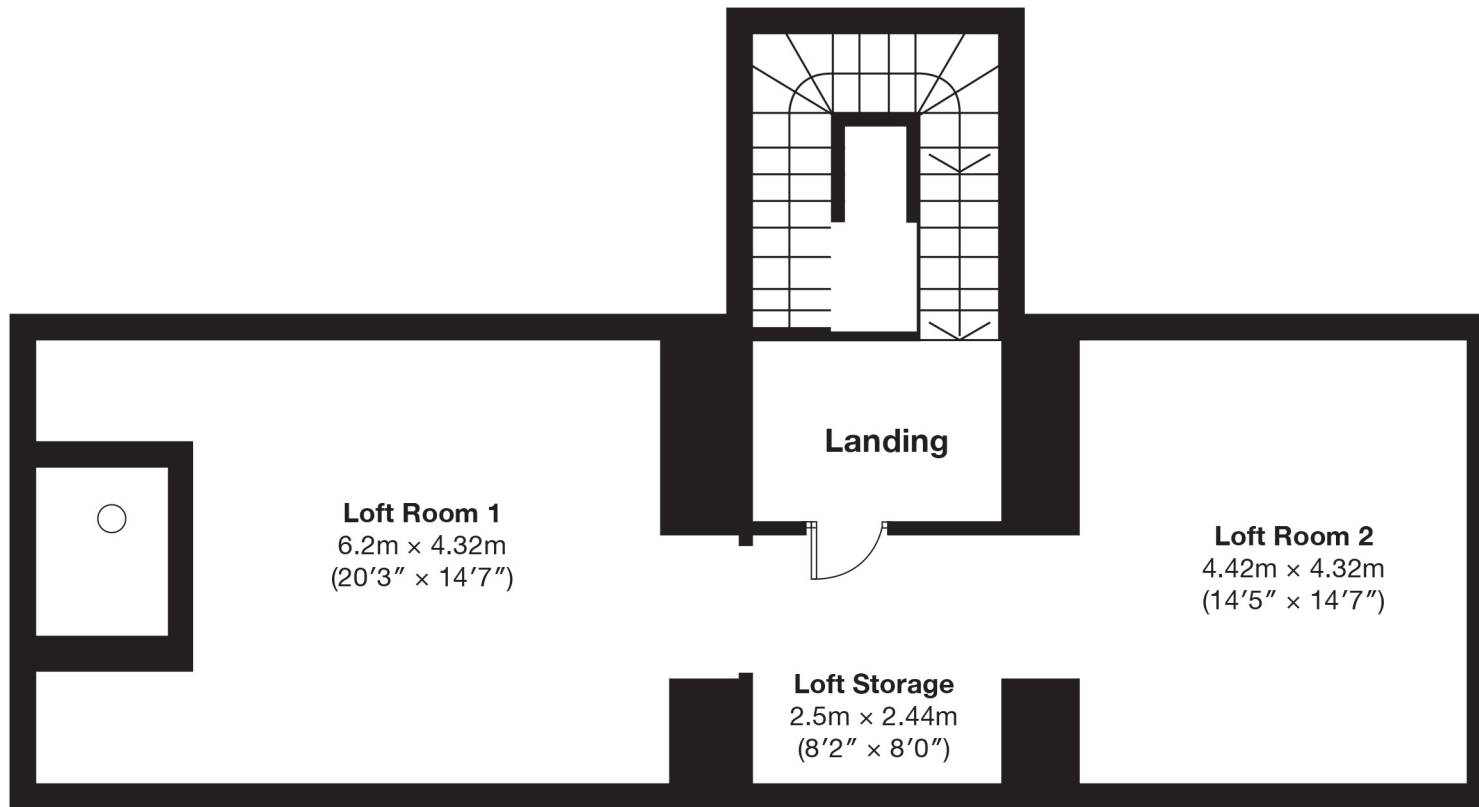
Ground Floor



Lower Ground Floor



First Floor



Second Floor/ Loft