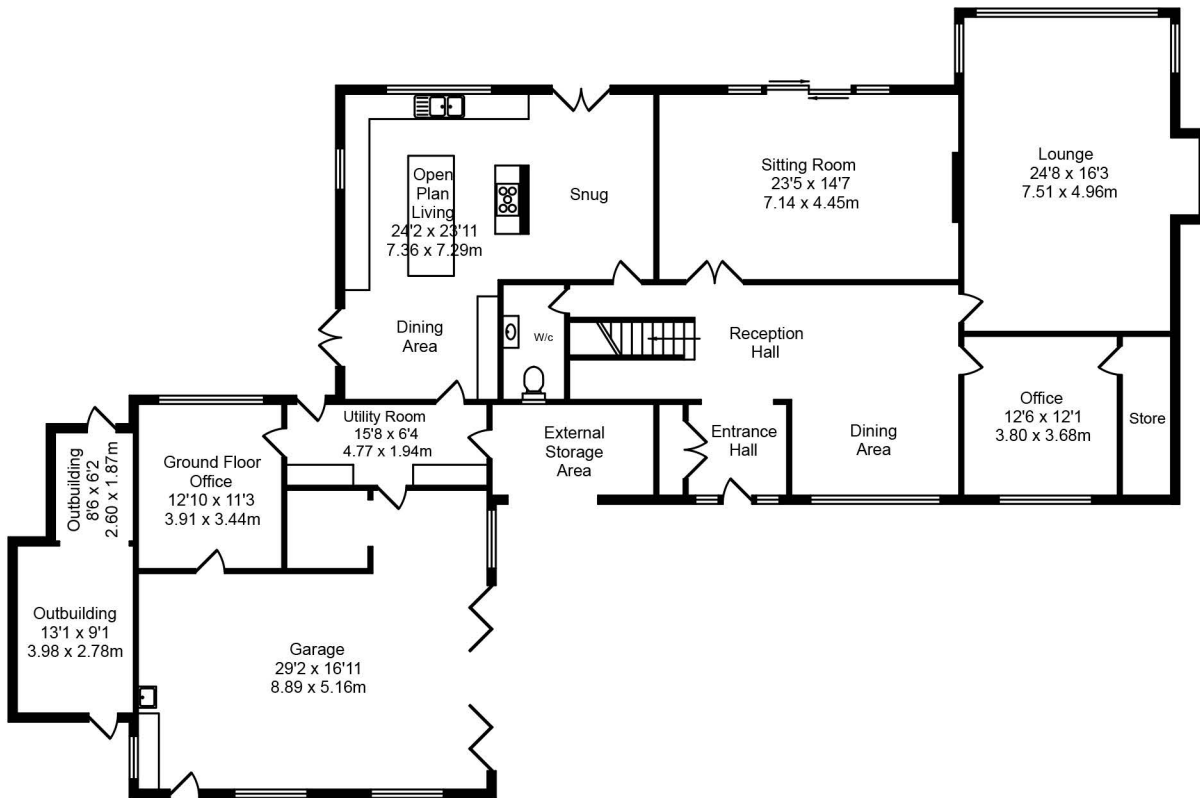


# Vicarage Lane, Ormskirk

## Total Approx. Floor Area 5245 Sq.ft. (487.3 Sq.M.)

Whilst every effort is made to accurately reproduce these floor plans, measurements are approximate, not to scale and for illustrative purposes only

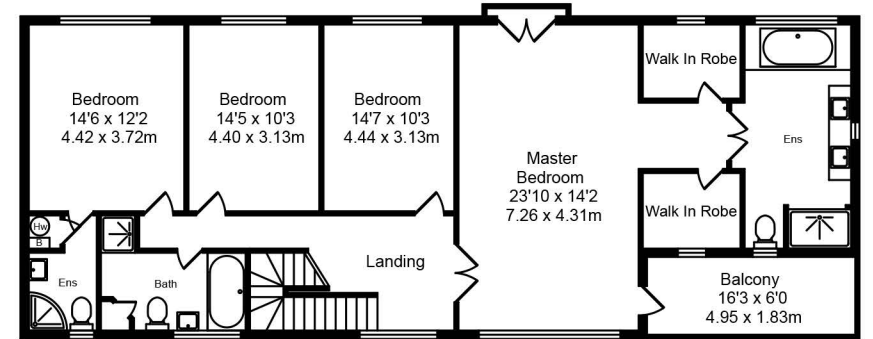


**Ground Floor**  
 Approx. Floor Area 3087 Sq.Ft (286.8 Sq.M.)



**Garage**  
 Approx. Floor Area 324 Sq.Ft (30.1 Sq.M.)

**Garage**  
 Approx. Floor Area 393 Sq.Ft (36.5 Sq.M.)



**First Floor**  
 Approx. Floor Area 1441 Sq.Ft (133.9 Sq.M.)