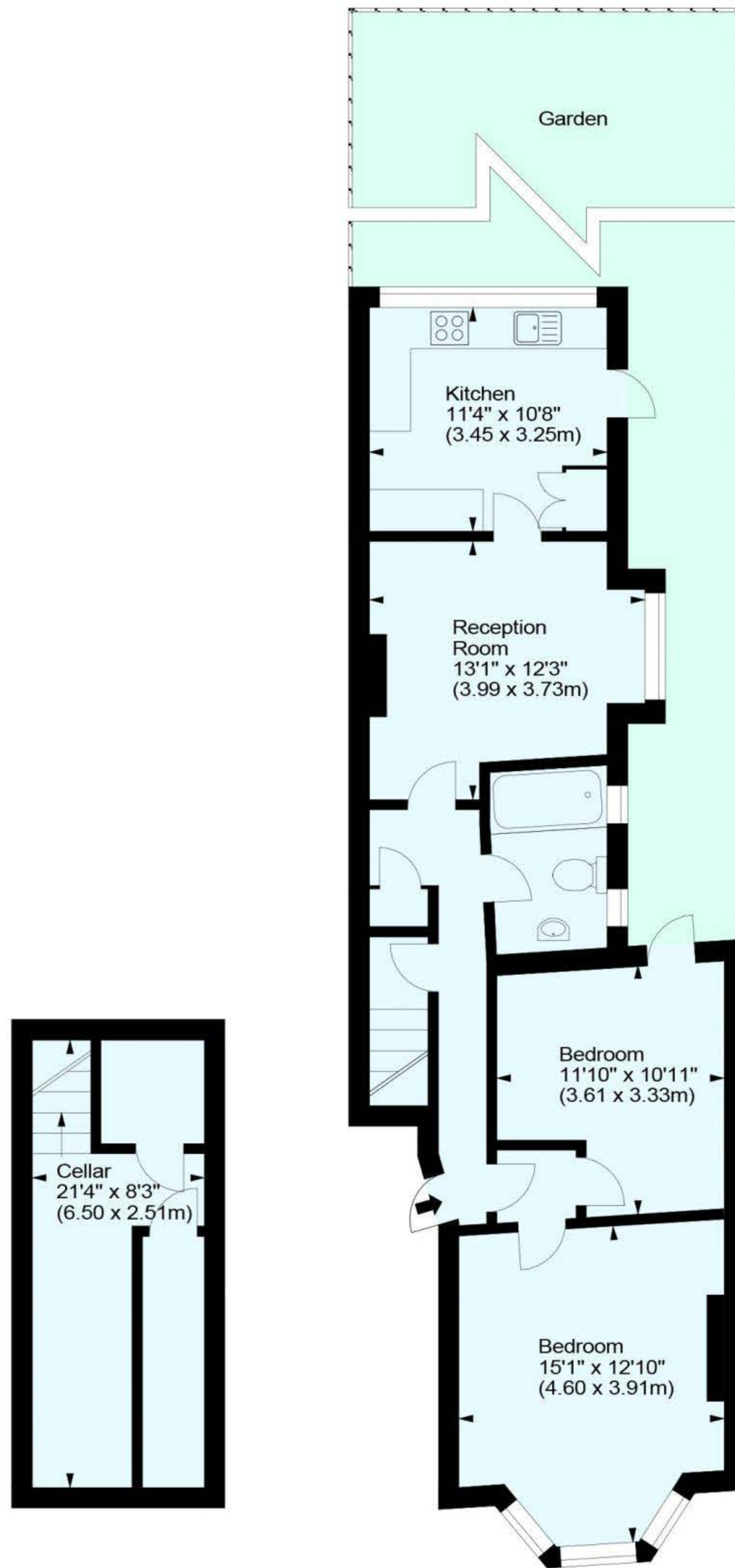


Parkgate Road, SW11

Approx. Gross Internal Area = 904 sq ft / 83.98 sq m

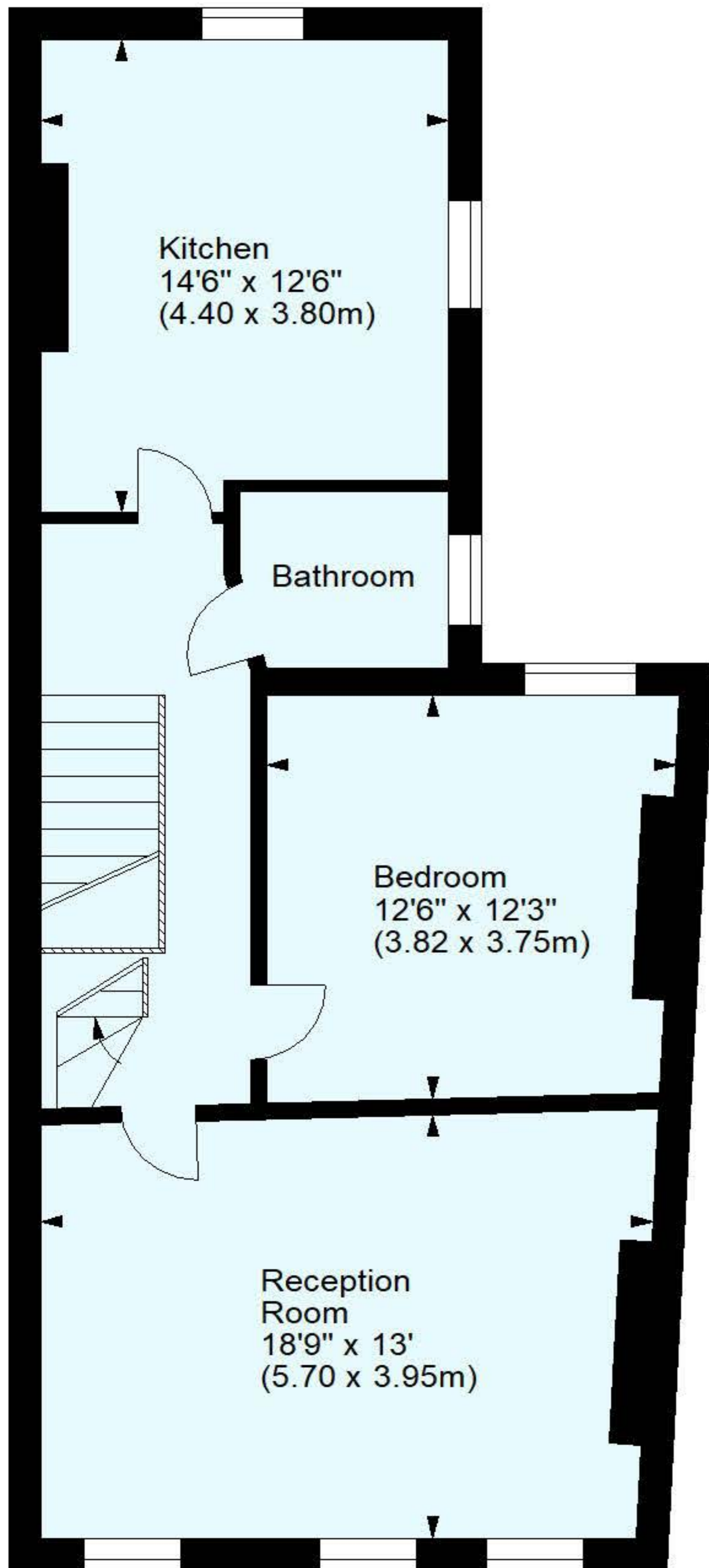


Lower Ground Floor

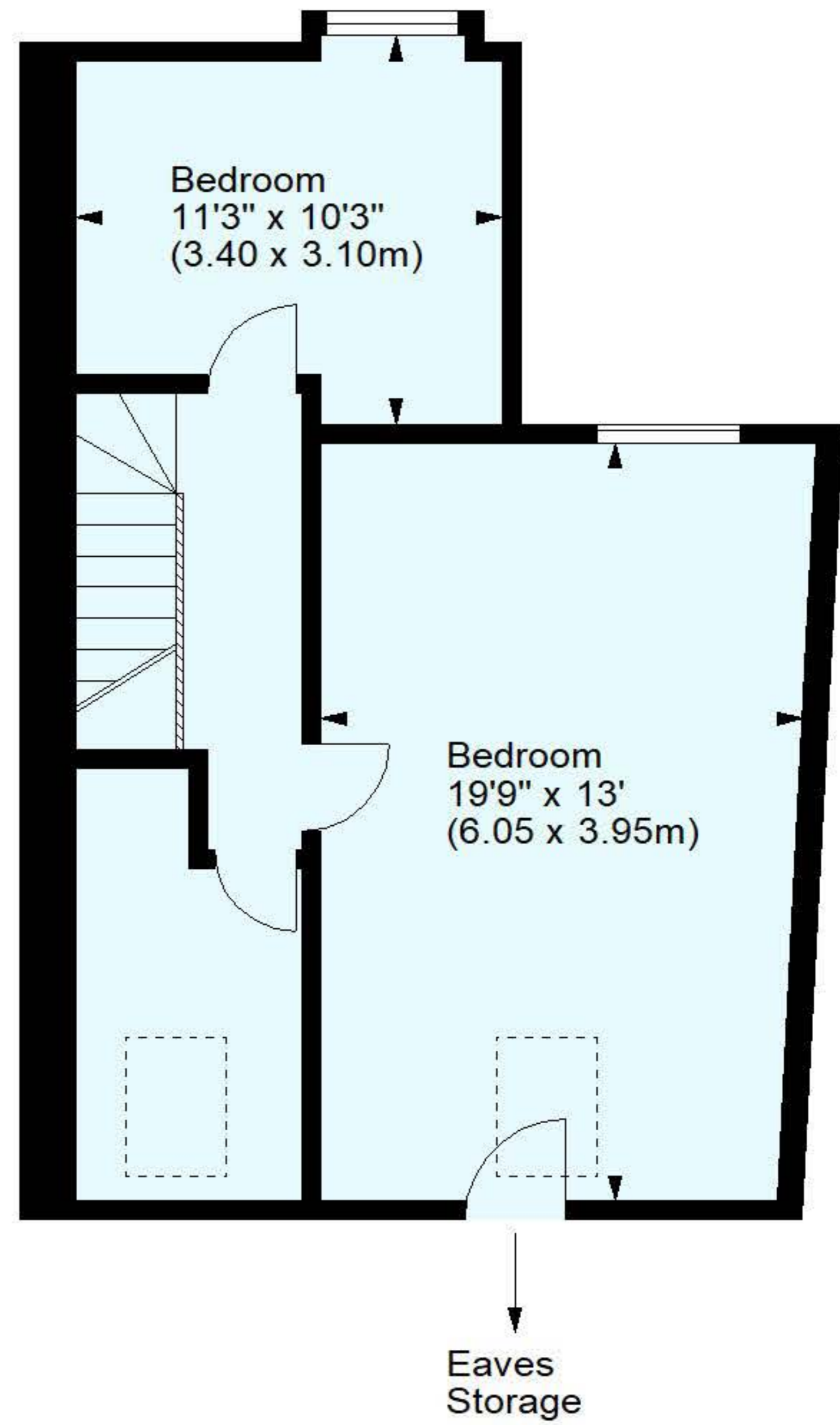
Ground Floor

Parkgate Road, SW11

Approx. Gross Internal Area = 1224 sq ft / 113.71 sq m



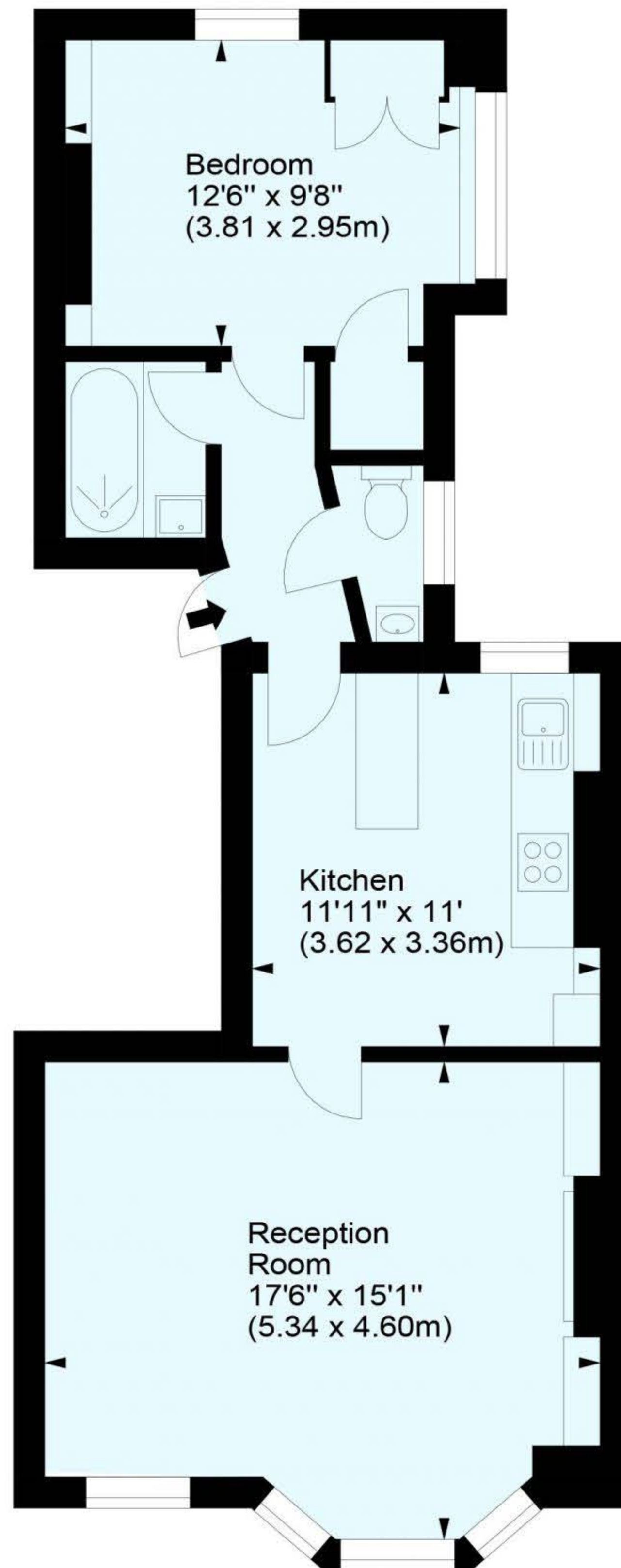
Second Floor



Loft

Parkgate Road, SW11

Approx. Gross Internal Area = 588 sq ft / 54.63 sq m



First Floor