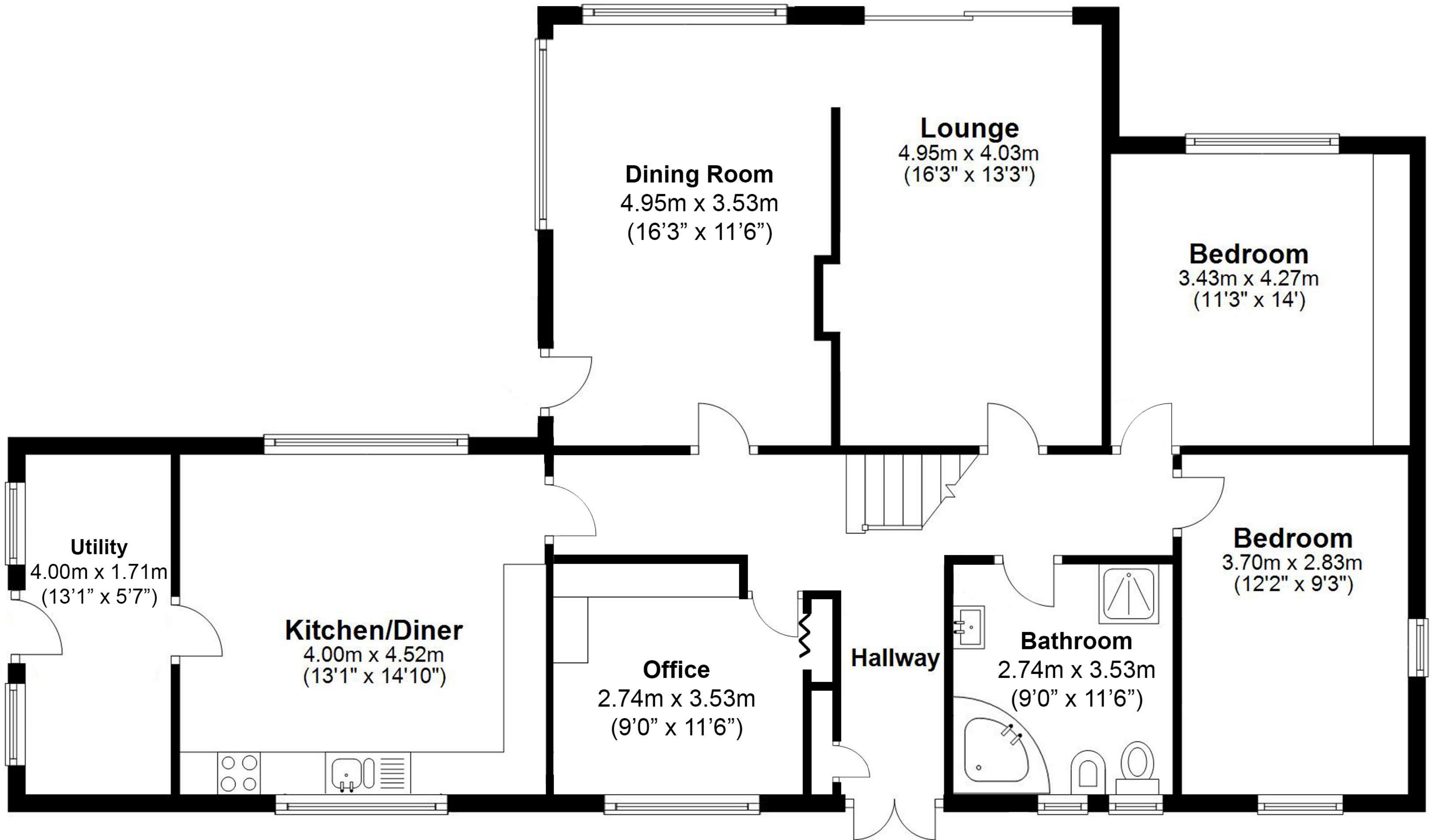


Ground Floor

Approx. 114.7 sq. metres (1234.8 sq. feet)

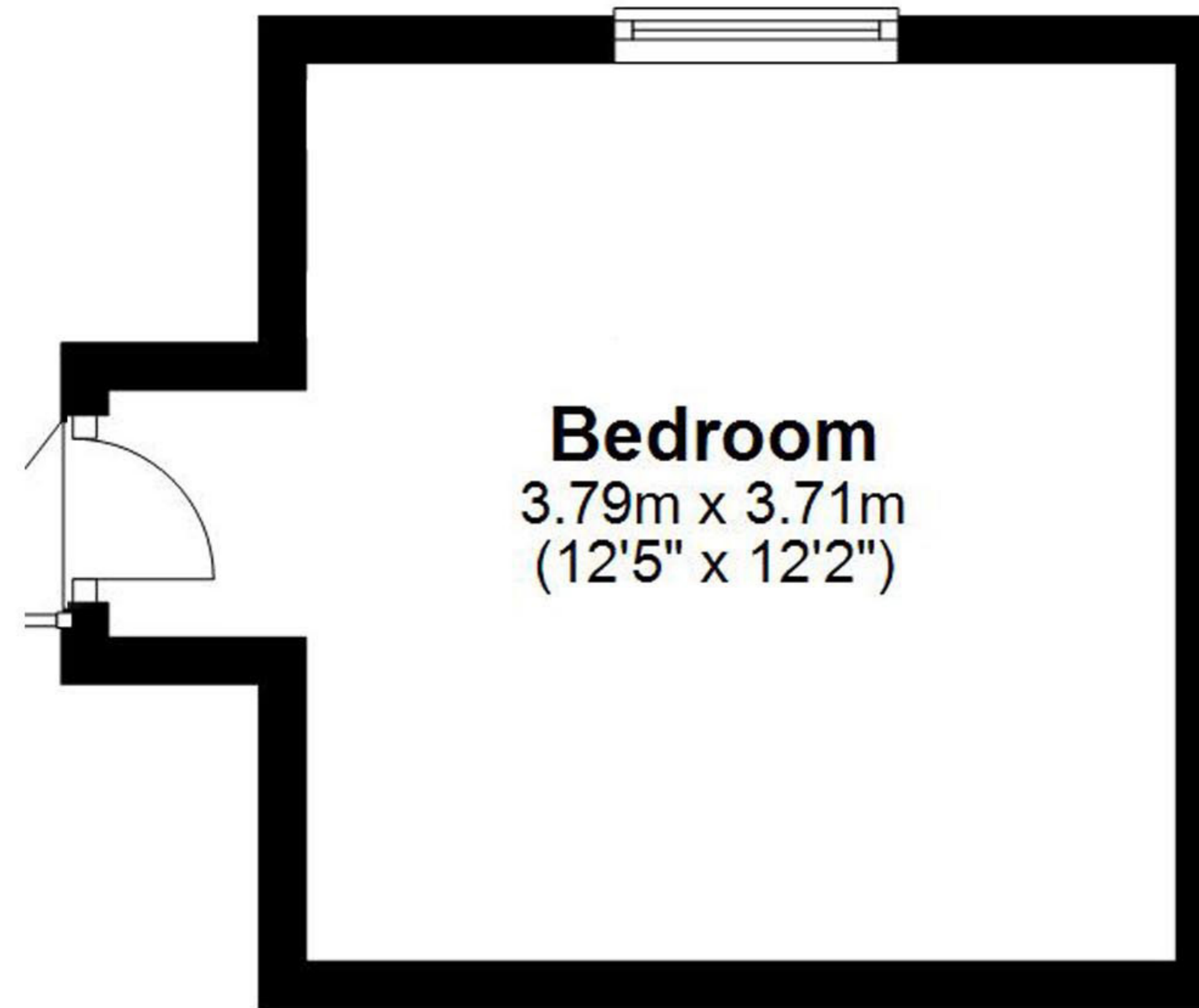


Total area: approx. 155.1 sq. metres (1669.4 sq. feet)



Attic Room

Approx. 19.1 sq. metres (205.7 sq. feet)

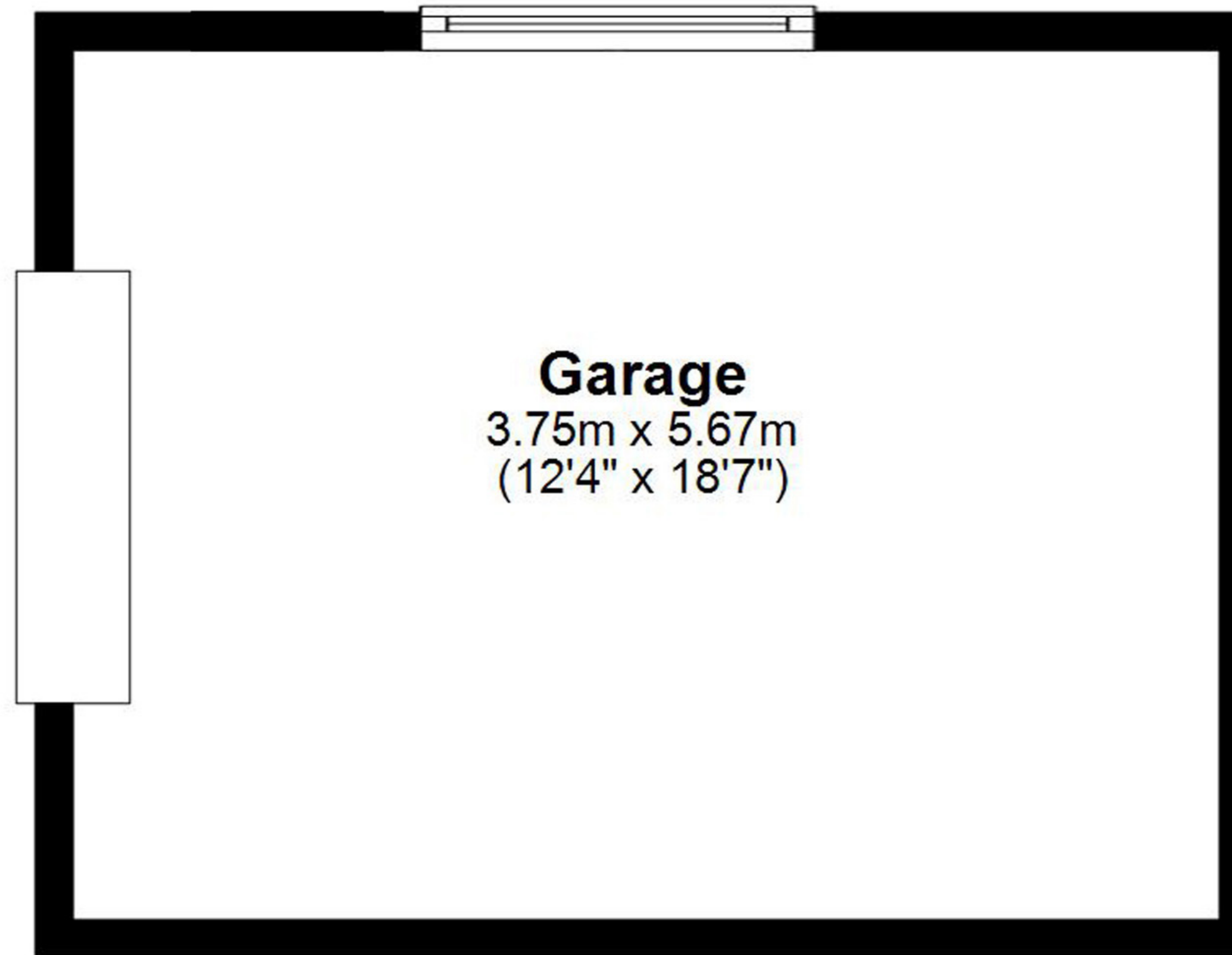


Total area: approx. 155.1 sq. metres (1669.4 sq. feet)



Garage

Approx. 21.3 sq. metres (228.9 sq. feet)



Total area: approx. 155.1 sq. metres (1669.4 sq. feet)