

Finest

finest.co.uk

Slaley Hall | Slaley | Hexham | Northumberland

2 Slaley Park



“A contemporary woodland house with private leisure suite & indoor pool”

The Property

Positioned within a private, wooded setting, this striking contemporary house has been thoughtfully designed to maximise light, space and its connection to the surrounding woodland. Arranged across multiple levels, the layout unfolds with a natural sense of progression, combining expansive open living spaces with more intimate areas for relaxation, alongside an exceptional leisure suite that elevates the property beyond the ordinary.

The entrance hall forms a central point within the home, linking the accommodation on this level while a staircase rises to the principal living spaces above. At this level, the kitchen has been carefully designed as both a functional workspace and a social setting, fitted with sleek cabinetry, integrated appliances and a substantial island with breakfast seating. The adjoining dining area is set slightly apart, creating a more atmospheric environment for entertaining, with considered lighting and direct access to the outside.

On the next level, a family room has been designed as a more social and informal setting, centred around a bespoke fitted bar. Set beneath a partially vaulted ceiling, the space feels both open and defined, with the bar area thoughtfully integrated beneath the eaves, incorporating shelving and seating to create a natural focal point for entertaining.

Full-height glazing continues here, with doors opening directly onto a further balcony, allowing the space to extend naturally outdoors and drawing in views of the surrounding woodland. The elevated position enhances both light and outlook, reinforcing the sense of separation from the more formal living areas while remaining visually connected through the split-level design.

The relationship between the family room, sitting room and mezzanine has been carefully considered, creating a sequence of spaces that feel distinct in purpose yet cohesive in design, allowing for both larger gatherings and quieter, more relaxed use.



The sitting room, positioned on the next level, is particularly impressive, defined by its vaulted ceiling and full-height glazing which draws in natural light throughout the day. Doors open directly onto a generous balcony, extending the living space outward and providing a natural setting for outdoor seating and dining, with a pleasant outlook across the surrounding trees. Internally, the space has been carefully arranged to balance scale with comfort, with a contemporary fireplace set into a feature wall forming a natural focal point. The use of large-format flooring and a restrained palette enhances the sense of openness, while the height of the ceiling adds a strong architectural presence.

Above, a mezzanine level introduces an additional layer of flexibility, enclosed with a glazed balustrade and accessed via a ladder-style stair. Set beneath the eaves with rooflights above, it offers a more secluded setting suited to reading or informal use, while maintaining a visual connection to the main living space below.

The bedroom accommodation is arranged to provide both privacy and flexibility. The principal suite occupies its own wing and is notably generous in scale,

complemented by a well-appointed en-suite bathroom and a separate dressing room. Additional bedrooms are positioned across the upper and lower levels, served by a combination of en-suite and separate bath and shower rooms, allowing the layout to adapt easily for family life or visiting guests.





On the ground floor, a further bedroom suite with walk-in wardrobe and en-suite provides a comfortable and private retreat, while an additional bedroom, currently used as a study, together with a utility room and a well-proportioned gym, complete this level, enhancing the practicality of the overall layout.

A defining feature of the property is the dedicated leisure suite, arranged on the lower ground floor. Designed as a self-contained wellness space, it centres around an indoor swimming pool, enhanced by a bespoke rock feature with waterfall, introducing both movement and a more atmospheric quality to the setting. The surrounding space has been thoughtfully arranged to include a jacuzzi, sauna and steam room, with tiled finishes running throughout, while soft lighting and mirrored walls enhance depth and create a more immersive environment. The overall design balances functionality with a sense of retreat, offering a private leisure space that feels distinct from the main living accommodation, yet entirely integrated within the home's overall design and lifestyle offering.



Google Maps

what3words



///heartless.beakers.easily

Wayleaves, Easements & Rights of Way

The property is being sold subject to all existing wayleaves, easements and rights of way, whether or not specified within the sales particulars.

Services

Mains electricity, water and drainage. Oil central heating

Postcode Council Tax EPC Tenure

NE47 0BG

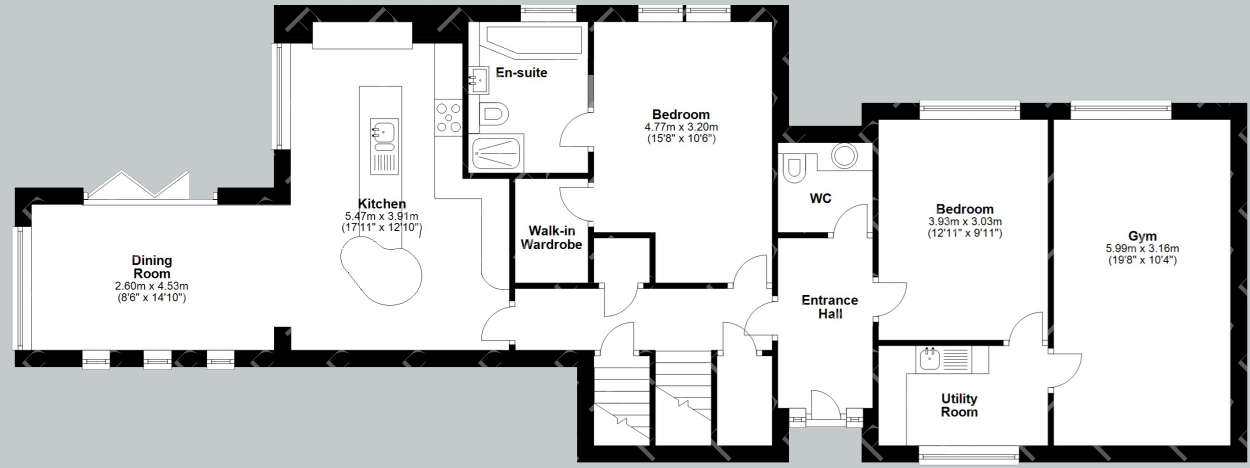
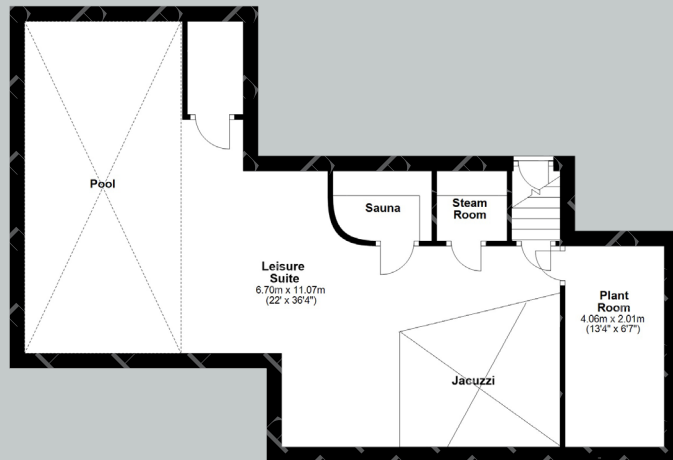
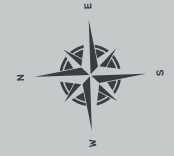
Band G

Rating C

Freehold



Floor Plans



Total area: approx. 391.1 sq.metres (4209.6 sq. feet)

Floor Plans



First Floor

Garage

Total area: approx. 391.1 sq.metres (4209.6 sq. feet)

Finest

Viewings Strictly by Appointment



finest.co.uk

15 Market Place | Corbridge | Northumberland | NE45 5AW
0330 111 2266 | contact@finest.co.uk

IMPORTANT INFORMATION Finest Properties, for themselves and for the Vendors and Lessors of this property whose Agents they are give notice that: (1) The particulars are set out as a general outline only for the guidance of intended purchasers or lessees and do not constitute, nor constitute part of, an offer or contract; (2) All descriptions, dimensions, reference to condition and necessary permissions for use and occupation and other details are given without responsibility and any intending purchasers or tenants should not rely on them as statements or representations of fact, but must satisfy themselves by inspection or otherwise as to the correctness of each of them; (3) No person in the employment of Finest Properties, has any authority to make or give any representation or warranty whatever in relation to this property.