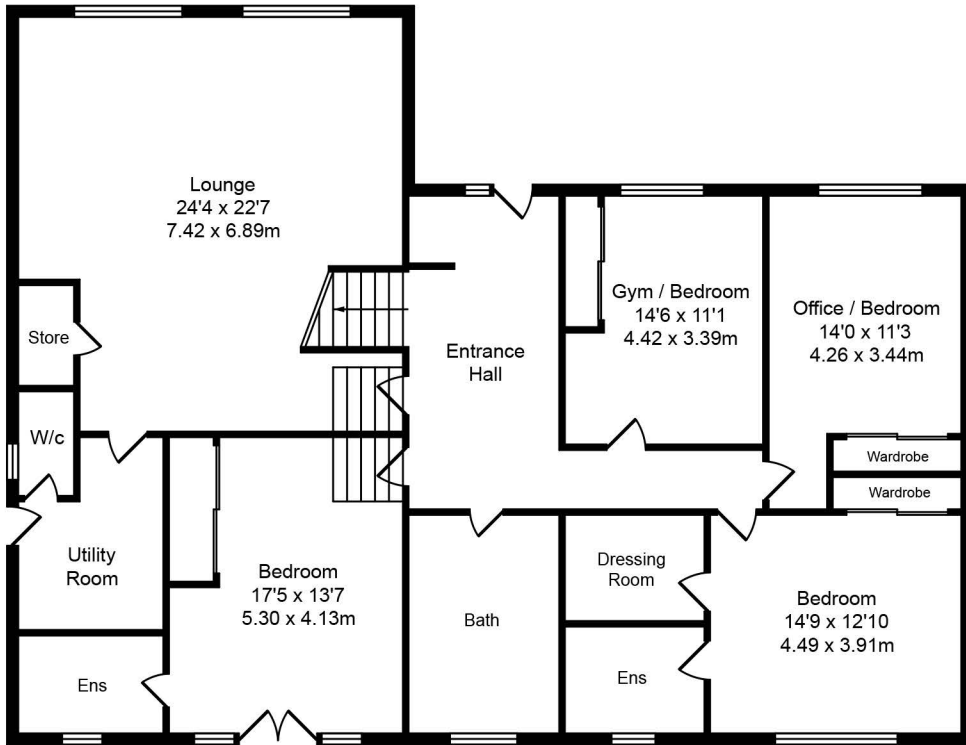
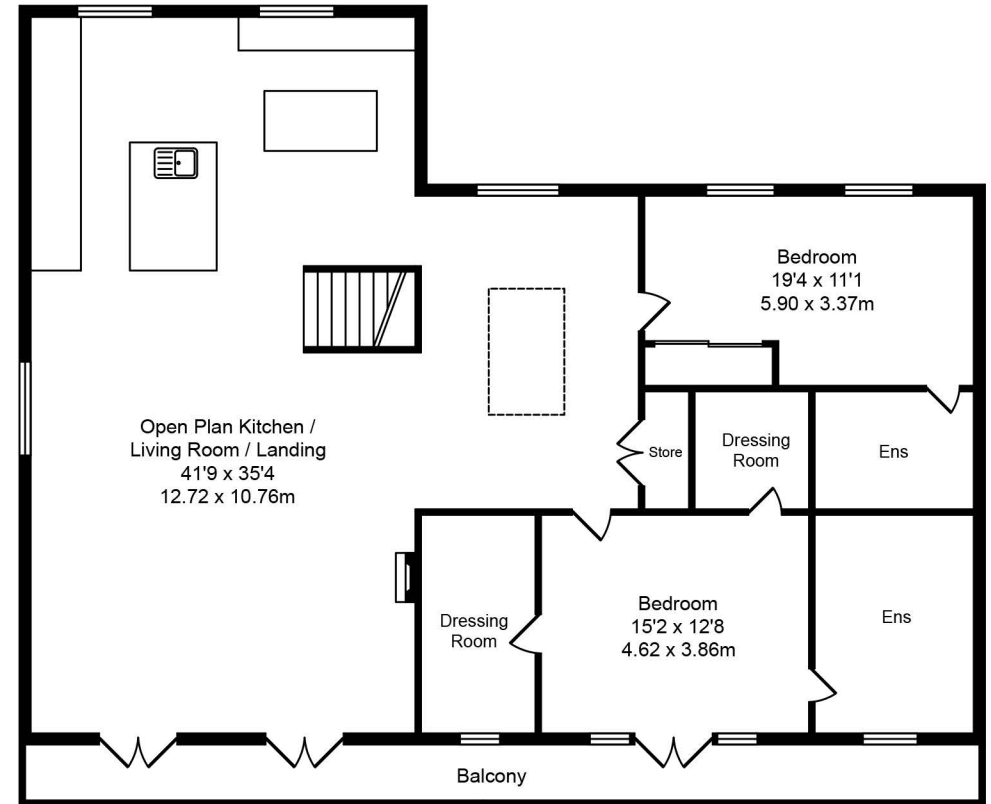


Bradshaw Lane, Mawdesley  
Total Approx. Floor Area 3950 Sq.ft. (367.0 Sq.M.)

Whilst every effort is made to accurately reproduce these floor plans, measurements are approximate, not to scale and for illustrative purposes only



Ground Floor  
Approx. Floor  
Area 1975 Sq.Ft  
(183.5 Sq.M.)



First Floor  
Approx. Floor  
Area 1975 Sq.Ft  
(183.5 Sq.M.)