



The Rosewood

“An elegant five-bedroom stone house with generous living space, double garage and garden”

The Property

The Rosewood is a substantial five-bedroom stone house, newly built by Cussins and forming part of the Sycamore Place development. Known for their carefully considered, smaller-scale developments, Cussins have incorporated a modern specification here, including solar panels, triple glazing, electric vehicle charging and energy-efficient systems, all designed to enhance performance and reduce day-to-day running costs.

A central hallway provides a clear and welcoming point of entry, establishing the home's sense of proportion from the outset. To the front, a formal dining room is framed by a bay window, creating a composed setting for entertaining, while to the rear, the principal reception room enjoys a quieter aspect across the garden.

Extending the full depth of the house, the kitchen, dining and family room forms the most social part of the layout. Designed with both scale and practicality in mind, it allows for clearly defined areas without interrupting flow. A bay window to the front and bi-fold doors to the rear ensure the space remains consistently light, while integrated appliances and considered cabinetry support a clean, functional finish. A separate utility room adds a practical layer to the arrangement.

Upstairs, the first floor centres around the principal bedroom suite, where a dressing area leads through to a private en suite. Two further double bedrooms are served by a family bathroom fitted with both bath and separate shower.

The second floor introduces two additional bedrooms and a further bathroom, offering flexibility for guests, independent living space or home working.

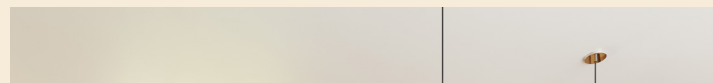


The Development

Sycamore Place is an exclusive collection of thoughtfully designed homes by Cussins, comprising a limited number of three and five-bedroom houses arranged within a carefully planned village setting. The development has been conceived with a clear emphasis on longevity and architectural integrity, with each property constructed in natural sandstone to reflect the established character of Northumberland's rural villages.

Across the scheme, the homes are individually designed yet cohesive in their appearance, with a consistent use of traditional materials, considered proportions and well-balanced elevations. The result is a development that feels established from the outset, rather than imposed, with each house sitting comfortably within its plot and the wider streetscape.

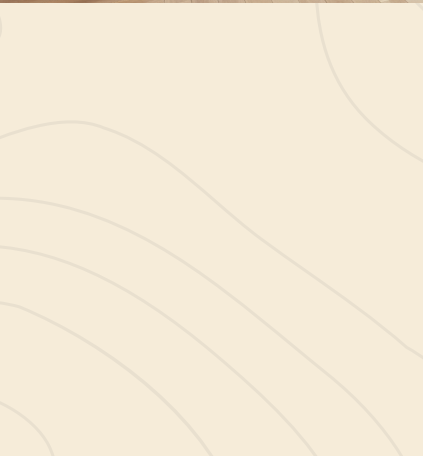
Internally, the properties are arranged to accommodate modern family life, with a strong focus on open-plan kitchen, dining and living spaces alongside more defined reception rooms, allowing for both everyday living and formal entertaining. Many of the house types are arranged over three floors, offering a level of flexibility that adapts easily to changing requirements, whether for growing families, home working or guest accommodation.





Attention has also been given to practical elements, with features such as utility rooms, multiple bathrooms, dressing areas and generous storage incorporated as standard. Externally, each home benefits from private gardens, off-street parking and either integral or detached garaging, ensuring the development functions as well as it presents.

Sycamore Place offers a considered approach to modern housebuilding, combining traditional craftsmanship with layouts designed for contemporary living, within a carefully composed and well-proportioned setting.



Google Maps

what3words



///highs.skylights.detection

Wayleaves, Easements & Rights of Way

The property is being sold subject to all existing wayleaves, easements and rights of way, whether or not specified within the sales particulars.

Services

Mains electricity, water and sewerage. Air Source Heat Pump.

Postcode Council Tax EPC Tenure

NE48 4BH

Band TBC

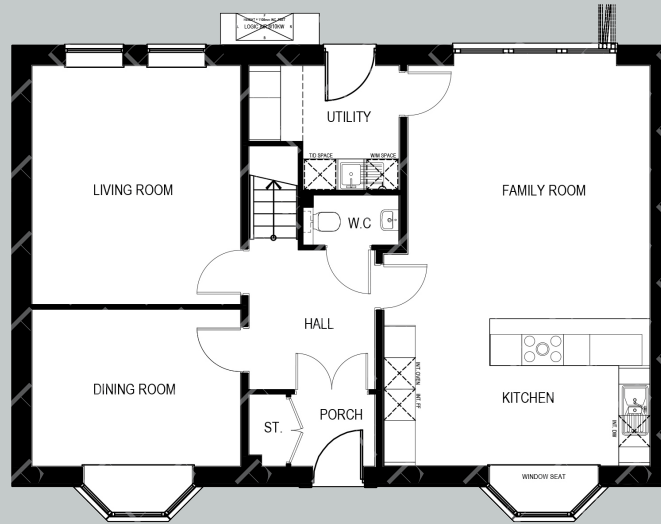
Rating TBC

Freehold

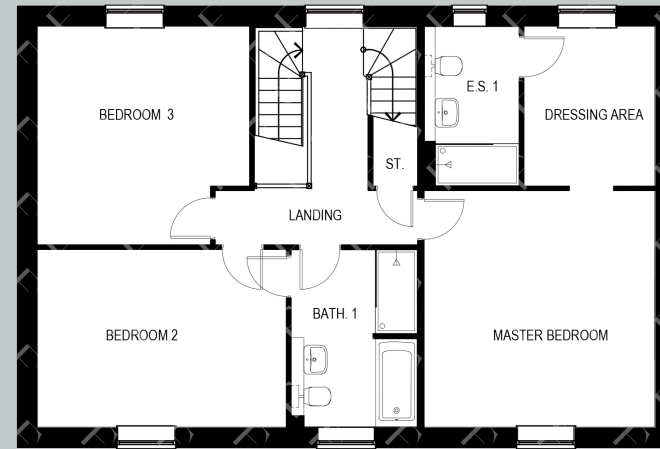


Floor Plans

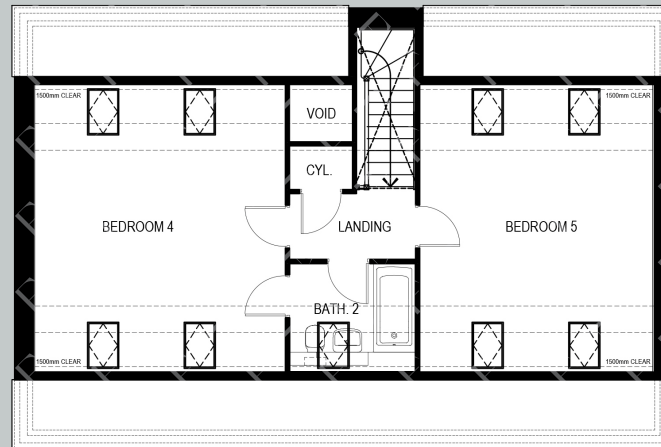
Ground Floor



First Floor



Second Floor



Finest
PROPERTIES

Viewings Strictly by Appointment



finest.co.uk

15 Market Place | Corbridge | Northumberland | NE45 5AW
0330 111 2266 | contact@finest.co.uk

IMPORTANT INFORMATION Finest Properties, for themselves and for the Vendors and Lessors of this property whose Agents they are give notice that: (1) The particulars are set out as a general outline only for the guidance of intended purchasers or lessees and do not constitute, nor constitute part of, an offer or contract; (2) All descriptions, dimensions, reference to condition and necessary permissions for use and occupation and other details are given without responsibility and any intending purchasers or tenants should not rely on them as statements or representations of fact, but must satisfy themselves by inspection or otherwise as to the correctness of each of them; (3) No person in the employment of Finest Properties, has any authority to make or give any representation or warranty whatever in relation to this property.