

Signal House | Lighthouse View | Ambie | Morpeth | Northumberland



“A contemporary coastal house with elevated sea views, expansive glazing and balconies overlooking the Northumberland coastline”

The Property

Positioned on the headland dunes at Wellhaugh Point on the edge of Amble, Signal House enjoys a remarkable front line coastal setting with uninterrupted sea views stretching across the Northumberland Heritage Coastline towards Coquet Island and the harbour entrance. The house forms part of an exclusive private development of just three architecturally designed homes set collectively within their own grounds, with Signal House occupying the flagship position within the scheme.

Completed in recent years, the property has been carefully designed to respond to its surroundings, with expansive glazing and elevated living spaces arranged to frame the dramatic coastal landscape. The position within the dunes allows the house to capture the ever changing light across the North Sea while maintaining a strong sense of privacy.

The house adopts a thoughtfully considered upside down layout, placing the principal living spaces on the first floor where the views are most impressive. Entry is through a striking double height entrance hall where a sandstone feature wall rises through both floors, introducing a distinctive architectural element while enhancing the sense of scale and light.

The ground floor is largely dedicated to bedroom accommodation, offering four spacious double bedrooms arranged along the hallway. The principal bedroom enjoys sea views towards Coquet Island and benefits from a dressing room and an en suite shower room. A second bedroom also features its own en suite.

The third bedroom also enjoys sea views and connects directly to the family bathroom through a Jack and Jill arrangement, fitted with both a bath and a separate shower. This bathroom can also be accessed from the hallway, allowing it to function comfortably for guests and residents alike. A separate WC is also located on this floor.



Stairs rise to the first floor where the house opens into an impressive open plan living space beneath a vaulted ceiling. Here, the architecture shifts to frame the surrounding landscape, with full height glazing across the gable end drawing the sea and coastline directly into view. From this elevated vantage point the outlook takes in the Northumberland coastline, Coquet Island and the harbour beyond.

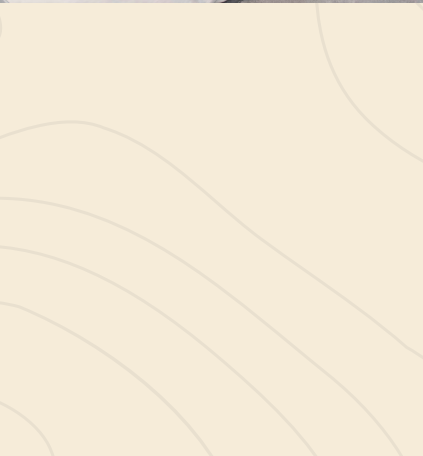
The sitting area naturally gathers around the glazing while doors open onto a generous balcony, allowing the living space to extend outdoors and providing an exceptional place to take in the coastal setting.

The kitchen and dining area sit alongside, forming a sociable space well suited to everyday living as well as entertaining. A central island anchors the kitchen, which is fitted with contemporary cabinetry and integrated appliances in a clean, understated finish. A second balcony sits adjacent to this area, offering another sheltered vantage point from which to enjoy the surrounding coastline.

A fourth double bedroom is also located on this level, providing flexibility as additional guest accommodation, a study or a quieter secondary sitting room if desired, with the convenience of a cloakroom also positioned on this floor.

Throughout the property, modern construction and high quality finishes contribute to comfort and efficiency. Underfloor heating is powered by an air source heat pump system, while thermally efficient construction ensures the house remains warm and economical to run throughout the year.





Google Maps

what3words



///evaporate.cling.crypt

Wayleaves, Easements & Rights of Way

The property is being sold subject to all existing wayleaves, easements and rights of way, whether or not specified within the sales particulars.

Services

Mains electricity, water and drainage.
Air source heat pump and underfloor heating.

Postcode Council Tax EPC Tenure

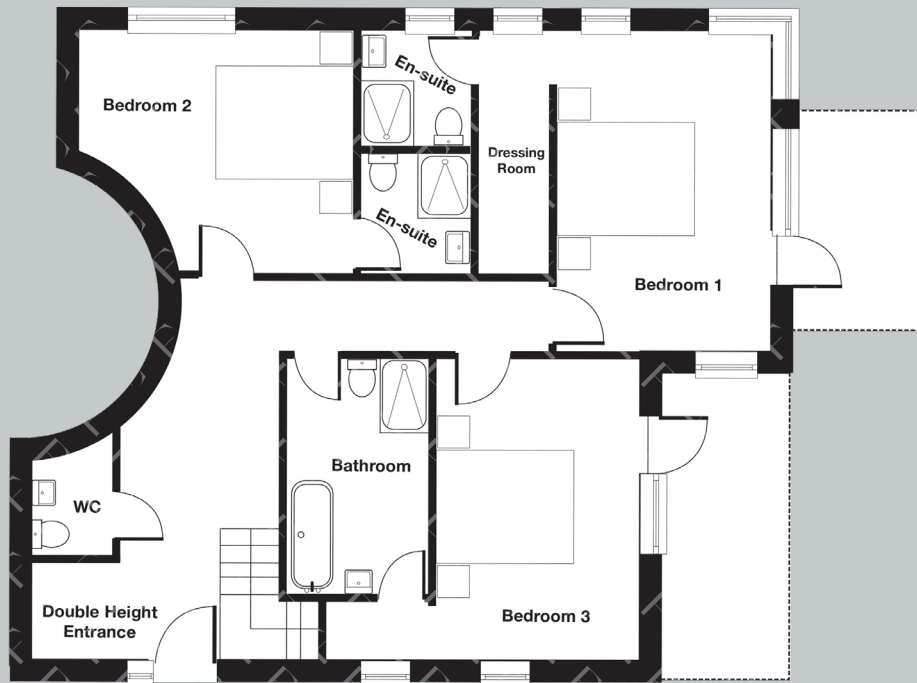
NE65 0SF

Band TBC

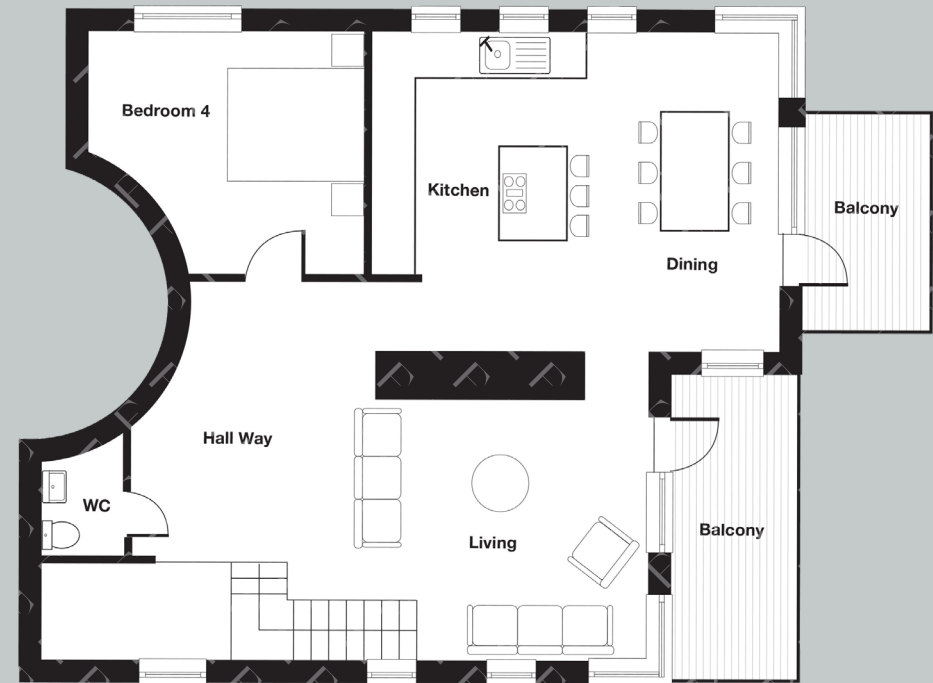
Rating B

Freehold

Floor Plans



Ground Floor



First Floor

Finest
PROPERTIES

Viewings Strictly by Appointment



finest.co.uk

15 Market Place | Corbridge | Northumberland | NE45 5AW
0330 111 2266 | contact@finest.co.uk

IMPORTANT INFORMATION Finest Properties, for themselves and for the Vendors and Lessors of this property whose Agents they are give notice that: (1) The particulars are set out as a general outline only for the guidance of intended purchasers or lessees and do not constitute, nor constitute part of, an offer or contract; (2) All descriptions, dimensions, reference to condition and necessary permissions for use and occupation and other details are given without responsibility and any intending purchasers or tenants should not rely on them as statements or representations of fact, but must satisfy themselves by inspection or otherwise as to the correctness of each of them; (3) No person in the employment of Finest Properties, has any authority to make or give any representation or warranty whatever in relation to this property.