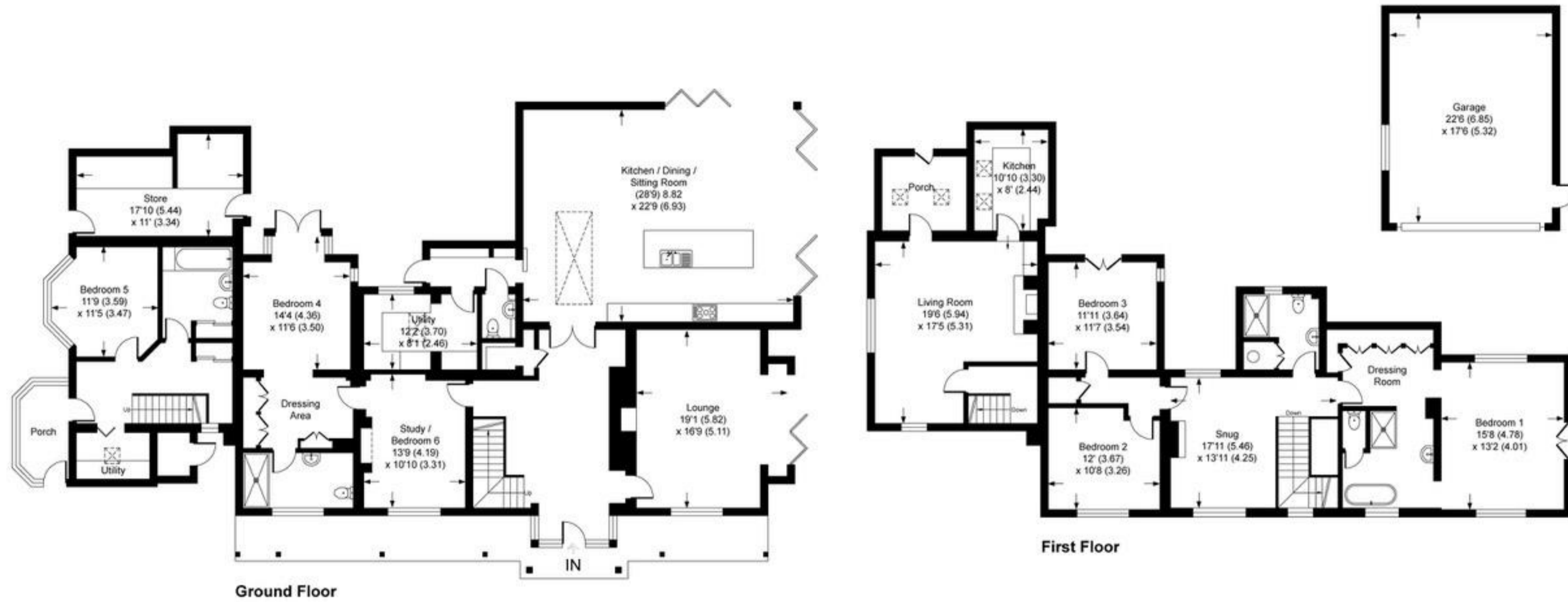


# Road From Stony Lane To Marshall Road, PL30

Approximate Gross Internal Area = 400.7 sq m / 4314 sq ft

Approximate Garage Internal Area = 36.4 sq m / 392 sq ft

Approximate Total Internal Area = 437.1 sq m / 4706 sq ft



This plan is for layout guidance only. Not drawn to scale unless stated. Windows and door openings are approximate. Whilst every care is taken in the preparation of this plan, please check all dimensions, shapes and compass bearings before making any decisions reliant upon them.

Produced by Devon Property Photography for Rohrs & Rowe