

Finest

finest.co.uk

Hexham | Northumberland

4 Coach House Drive



“A stylish three-storey detached house in a popular Hexham town location”

The Property

Set within a small, private development, this detached home presents a confident balance of contemporary design and practical family living. Clean architectural lines and carefully curated interiors are complemented by a layout that has been thoughtfully arranged to enhance both light and flow. The approach gives a clear sense of arrival, with a private block-paved driveway leading to an attached garage, while the stone and brick elevations reflect a quality of build that carries consistently throughout the property.

The house opens into a bright and welcoming entrance hall, where a double-height void immediately introduces a sense of volume and light. Glazing above draws daylight down through the space, while a glazed balustrade at first floor level adds a refined, architectural detail that continues the feeling of openness. A cloakroom/WC is positioned off the hall, discreetly placed for convenience. From here, the ground floor unfolds with clarity and purpose.

The sitting room is positioned to the front, a well-proportioned space with a calm, composed atmosphere. A contemporary media wall with integrated fireplace forms a strong focal point, with vertical timber detailing adding warmth and texture against otherwise clean lines. The proportions allow for a generous seating arrangement, making it equally suited to quieter evenings or more sociable gatherings.



To the rear, the kitchen and dining space has been designed as a natural point of connection within the house, both visually and functionally. Cabinetry combines warm timber tones with darker contrasting units, paired with sleek work surfaces and integrated appliances, creating a finish that feels both current and enduring. A central island provides additional preparation space and informal seating, while the dining area sits comfortably alongside, positioned to take full advantage of the garden outlook. A relaxed seating area is also incorporated, offering a more informal setting that works equally well for everyday use or entertaining. Bi-fold doors open directly onto the terrace, extending the space during warmer months and reinforcing the relationship between inside and out.

A separate utility room sits discreetly off the kitchen, maintaining the clean lines of the main space, while beyond this, a study provides a more private and adaptable area, well suited to home working or quieter use.

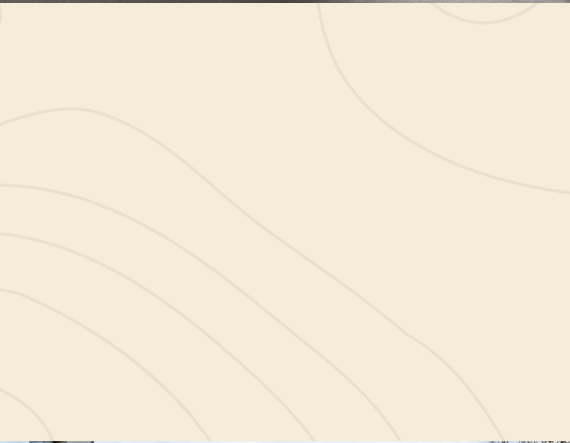
The first floor is arranged to provide a well-balanced and practical bedroom configuration. The main bedroom is positioned to the rear, benefiting from a dedicated dressing room and a well-appointed en suite shower room.

Two further bedrooms are well-sized doubles, each thoughtfully positioned to make the most of natural light and outlook. A fourth room is currently arranged as a study, offering flexibility for home working, with the option to adapt as a nursery or additional bedroom if required.



The family bathroom is finished in a clean, contemporary style and incorporating both a bath and separate shower, providing a practical and well-considered space for everyday use.

The second floor is arranged as a principal bedroom suite, offering a greater degree of privacy and separation from the rest of the house. The bedroom itself is well-proportioned, with natural light drawn in through roof glazing, while the adjoining dressing room provides generous, dedicated storage. A well-appointed shower room completes the arrangement.



Google Maps

what3words



///healthier.scar.driveways

Wayleaves, Easements & Rights of Way

The property is being sold subject to all existing wayleaves, easements and rights of way, whether or not specified within the sales particulars.

Services

Mains electricity, water and drainage. Gas central heating.



Postcode Council Tax EPC Tenure

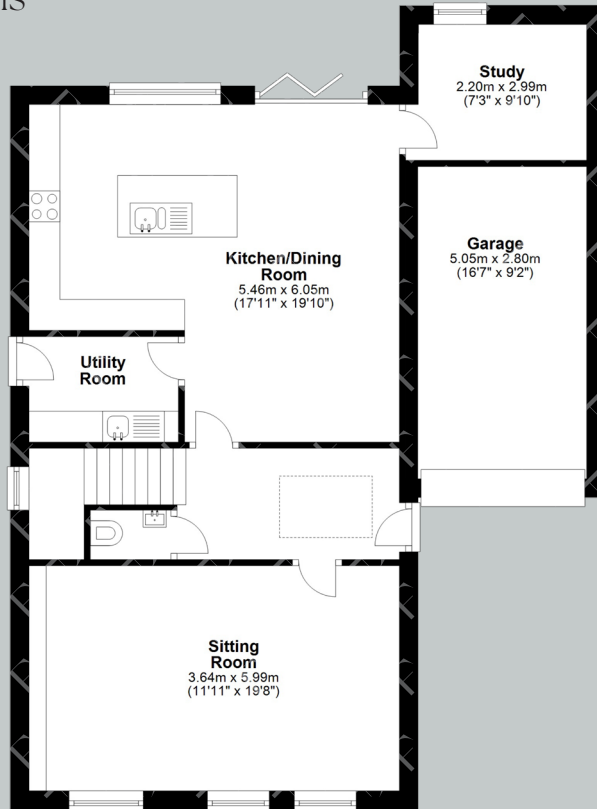
NE46 1EW

Band F

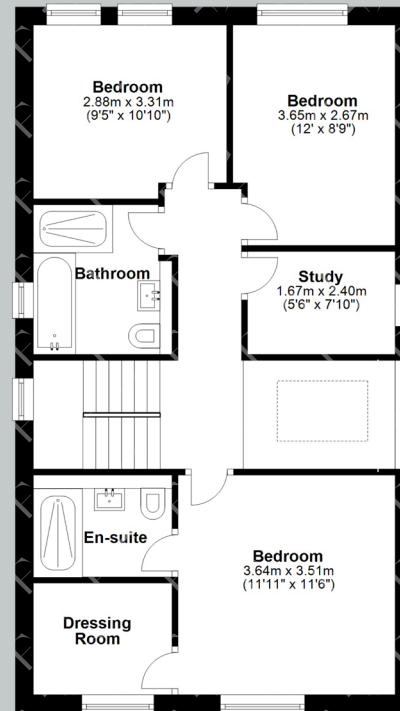
Rating B

Freehold

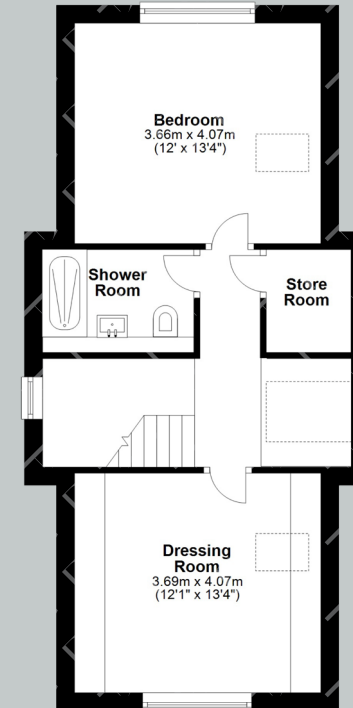
Floor Plans



Ground Floor



First Floor



Second Floor

Total area: approx. 196.4 sq. metres (2114.3 sq. feet)

Finest

Viewings Strictly by Appointment



finest.co.uk

15 Market Place | Corbridge | Northumberland | NE45 5AW

0330 111 2266 | contact@finest.co.uk

IMPORTANT INFORMATION Finest Properties, for themselves and for the Vendors and Lessors of this property whose Agents they are give notice that: (1) The particulars are set out as a general outline only for the guidance of intended purchasers or lessees and do not constitute, nor constitute part of, an offer or contract; (2) All descriptions, dimensions, reference to condition and necessary permissions for use and occupation and other details are given without responsibility and any intending purchasers or tenants should not rely on them as statements or representations of fact, but must satisfy themselves by inspection or otherwise as to the correctness of each of them; (3) No person in the employment of Finest Properties, has any authority to make or give any representation or warranty whatever in relation to this property.