



ASHLEIGH HOUSE
KINGSWEAR



NO ENTRY

50

Introducing Ashleigh House



Imagine stepping out of your front door & strolling down to the village cafe for fresh coffee, meeting friends at a cosy pub as the boats drift by, or hopping on the ferry for a spontaneous trip across to Dartmouth.

This is what you'll have at Ashleigh House in the heart of Kingswear village.



This stunning double-fronted period home is perfect for relaxed evenings, lively dinners with friends, or simply curling up with a book and admiring the views.



If you've been waiting for a lifestyle as enchanting as the setting, this could be the one for you, with its glorious views, generous entertaining spaces and period charm throughout.

The exposed beams lend a certain charm and ambience to the Open Plan Kitchen/Dining & Living Room that overlooks Darthaven Marina and upriver and across to Dartmouth town. There is also a very handy and spacious Utility Room with access to the Parking & Garden on this level.



AH

*Brimming With Character
& Timeless Charm*



The 3 Double Bedrooms are cosy and comfortable, providing a restful night's sleep after a day wandering the South West Coastal Paths or out on the river.

You can even watch your boat moored on the marina or pick your choice of craft from those you can see from each of the Bedroom windows.

And just look at that tub in the family Bathroom - contemporary with its mosaic tiles, yet encapsulating the stylish period touches with the clawfoot bath - ideal for a long soak.

Cosy Sophistication





The house has been well-thought through for all ages, with the ground floor offering Guest or Multi-Generational Living with its own level access from the street opening to a relaxing Sitting Room with adjoining Bedroom Ensuite.





At the rear of the house is a large level Terrace ideal for morning coffee in the fresh air or sundowners and a BBQ. From the Garden, you can access the Parking (by arrangement) for 1 Car.

Garden Suntrap

AH

About Kingswear



This picturesque village sits on the east bank of the River Dart in the South Hams area of outstanding natural beauty. A sunny spot, both in terms of its weather and residents, it is the ideal place to relax or enter into the vibrant spirit of the local community.

Get involved in the yacht club or Darthaven Marina, take a stroll along the South West Coastal Path visiting stunning local beaches or take refuge in one of the pubs or cafes in the village.

There's also a local store and post office as well as the traditional steam train for an idyllic trip, whilst a short trip across on the ferry gives easy access to Dartmouth with its myriad of shops and inns.

Kingswear truly is a place to enjoy and make your dream of a home by the sea a reality.

The Little Details

- Postcode: TQ6 0AD
- Tenure: Freehold
- Location: Conservation Area
- Council Tax Band: E
- Local Authority: South Hams District Council
- EPC Rating: G
- Services: Mains Water, Drainage & Electricity
- Heating: LPG Gas Central Heating & Electric Underfloor Heating
- Broadband Speed: Fibre Broadband Up to 74mbps
- Mobile Signal: Good
- Access: Retail: Level from the street with internal stairs to 3 floors
- Parking: Driveway Parking by arrangement for 1 Car
- Transport: Totnes (16 miles) or Newton Abbot (16 miles) for mainline trains to London. A38 Devon Expressway - 20 miles



W3W: minivans.swimsuits.succumbs

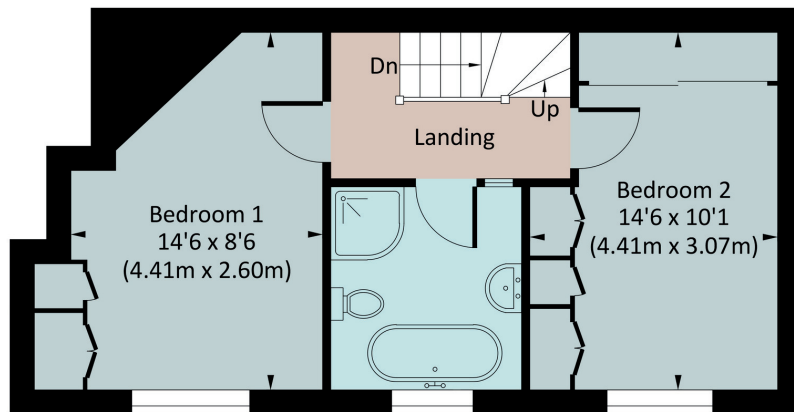


ASHLEIGH HOUSE

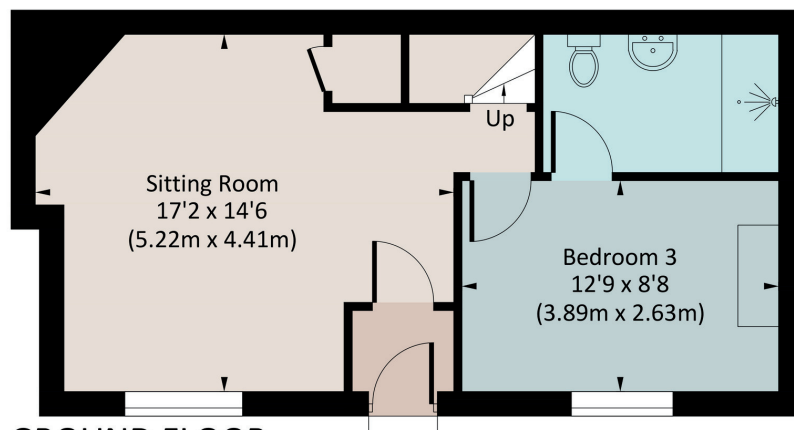
Approx. gross internal area
1410 Sq Ft. / 131.0 Sq M.



SECOND FLOOR



FIRST FLOOR



GROUND FLOOR

The Coastal House use all reasonable endeavours to supply accurate property information in line with the Consumer Protection from Unfair Trading Regulations 2008. These property details do not constitute any part of the offer or contract and all measurements are approximate. The matters in these particulars should be independently verified by prospective buyers. It should not be assumed that this property has all the necessary planning, building regulation or other consents. Any services, appliances and heating system(s) listed have not been checked or tested. Purchasers should make their own enquiries to the relevant authorities regarding the connection of any service. No person in the employment of The Coastal House has any authority to make or give any representations or warranty whatever in relation to this property or these particulars or enter into any contract relating to this property on behalf of the vendor. Floor plan not to scale and for illustrative purposes only. Coastal House Ltd Registered Office: 14 Mayors Avenue, Dartmouth, Devon, TQ6 9NG Registered in England & Wales: No 9447216



ASHLEIGH HOUSE
KINGSWEAR

We'd Love To Show You Around

team@thecoastalhouse.co.uk

01803 835 788

thecoastalhouse.co.uk



THE COASTAL HOUSE
ESTATE AGENTS