



Scenic delights & cosy comforts



Nestled like a cherished storybook Cottage along the scenic River Dart, this 2-bedroom mid-terraced Cottage beckons you into a world of charm and tranquility.

Enjoy the delights of the stunning panoramic views of the River Dart, stretching out before you like a watercolour painting come to life.





Step inside to discover a spacious Living Room, inviting you to unwind as you watch the play of sunlight on the water outside.

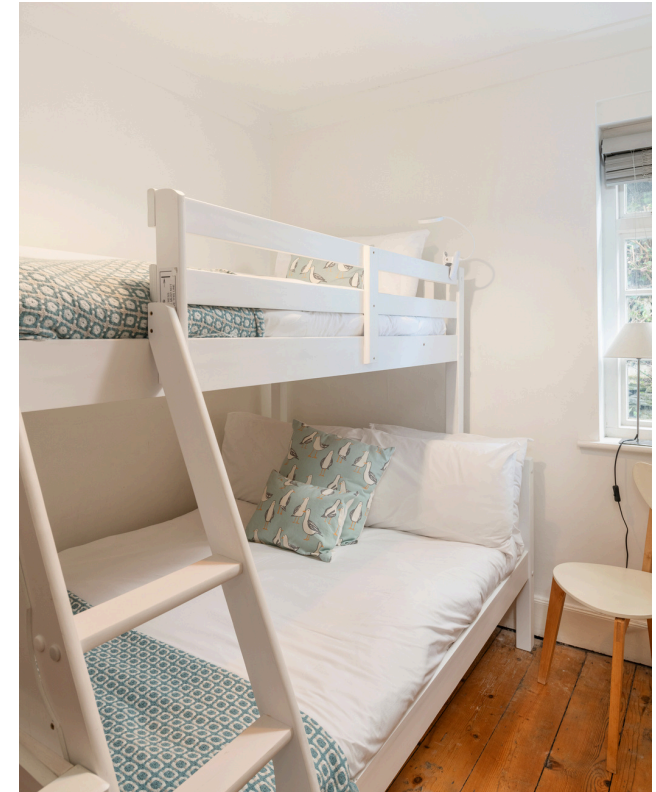
Tasty treats & dreamy nights



The eat-in contemporary styled Kitchen awaits your culinary adventures, where every dish is infused with the magic of the surroundings.

Off the Kitchen, the rear Courtyard is a private oasis where you can bask in the warmth of the morning sun.

This house is not just a home; it is a haven of serenity and comfort.



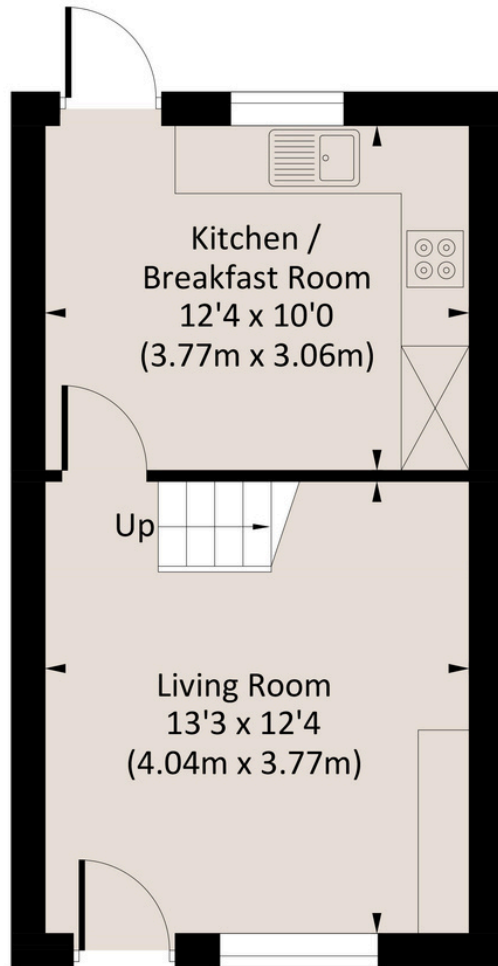
With two light and bright Bedrooms there is ample space for family and friends to enjoy the delights of this Cottage with you. Plus of course a very stylish and contemporary Shower Room.



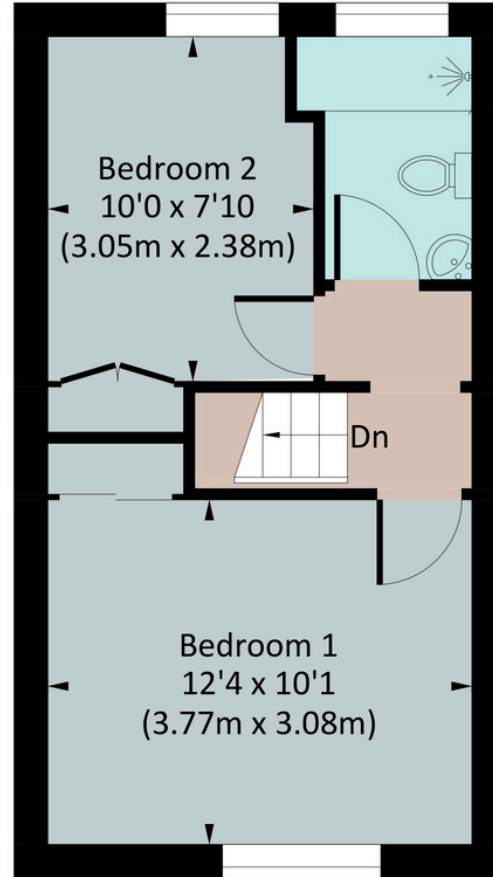
Outside, the enchantment continues with a front Deck that spans two tiers, offering a front-row seat to unparalleled views of the river, marina and picturesque Dartmouth.

Imagine mornings sipping your coffee as you watch boats glide by, or evenings spent toasting to the beauty of nature under a canopy of stars.

Floorplan



Ground Floor



First Floor

Approx. gross internal area
580 Sq Ft / 53.9 Sq M

The Little Details...

Postcode: TQ6 0AH

Tenure: Freehold

Council tax: Band C

EPC rating: E

Local Authority: South Hams District Council

Mains: Water, Electricity & Drainage

Heating: Electric Wall Heaters

Access: Up 76 Steps, No Vehicle Access

Broadband: Upto 74mbs

Mobile Signal: Good

Parking: Eligible for Residents' Parking Permit

Transport: Paignton (7miles) or Newton Abbot (16 miles) for mainline trains to London

A38 Devon Expressway - 20 miles



overnight.phantom.boast

The smallprint

The Coastal House use all reasonable endeavours to supply accurate property information in line with the Consumer Protection from Unfair Trading Regulations 2008. These property details do not constitute any part of the offer or contract and all measurements are approximate. The matters in these particulars should be independently verified by prospective buyers. It should not be assumed that this property has all the necessary planning, building regulation or other consents. Any services, appliances and heating system(s) listed have not been checked or tested. Purchasers should make their own enquiries to the relevant authorities regarding the connection of any service. No person in the employment of The Coastal House has any authority to make or give any representations or warranty whatever in relation to this property or these particulars or enter into any contract relating to this property on behalf of the vendor. Floor plan not to scale and for illustrative purposes only.

Coastal House Ltd Registered Office: 14 Mayors Avenue, Dartmouth, Devon, TQ6 9NG Registered in England & Wales: No 9447216





We'd Love To Show You Around

team@thecoastalhouse.co.uk

01803 835 788

thecoastalhouse.co.uk



THE COASTAL HOUSE

ESTATE AGENTS