

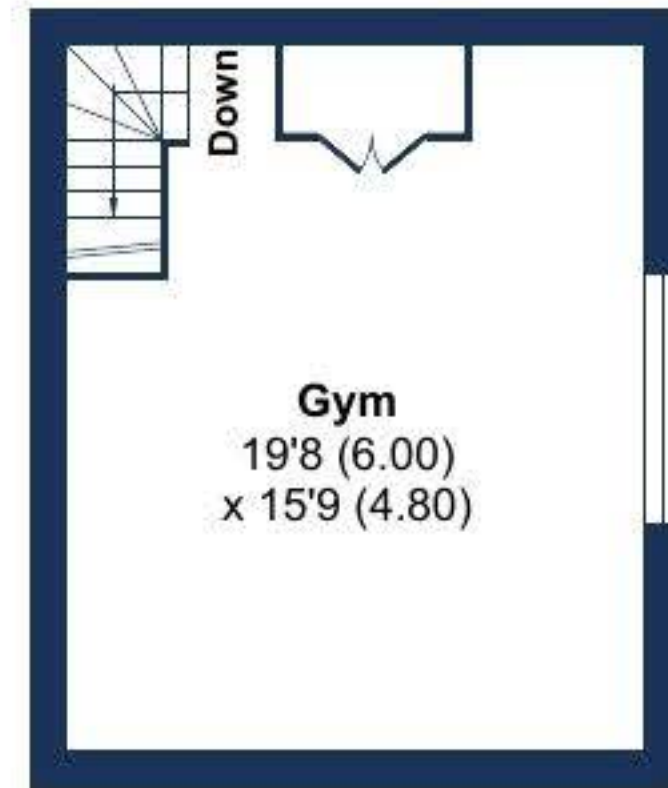
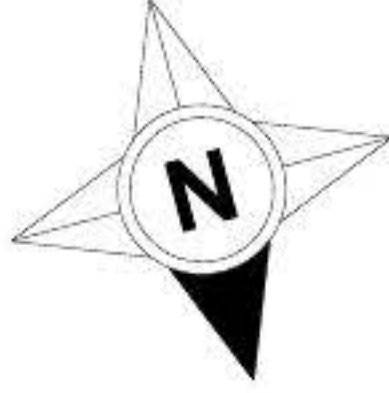
Hanby, Grantham, NG33

Approximate Area = 4671 sq ft / 433.9 sq m

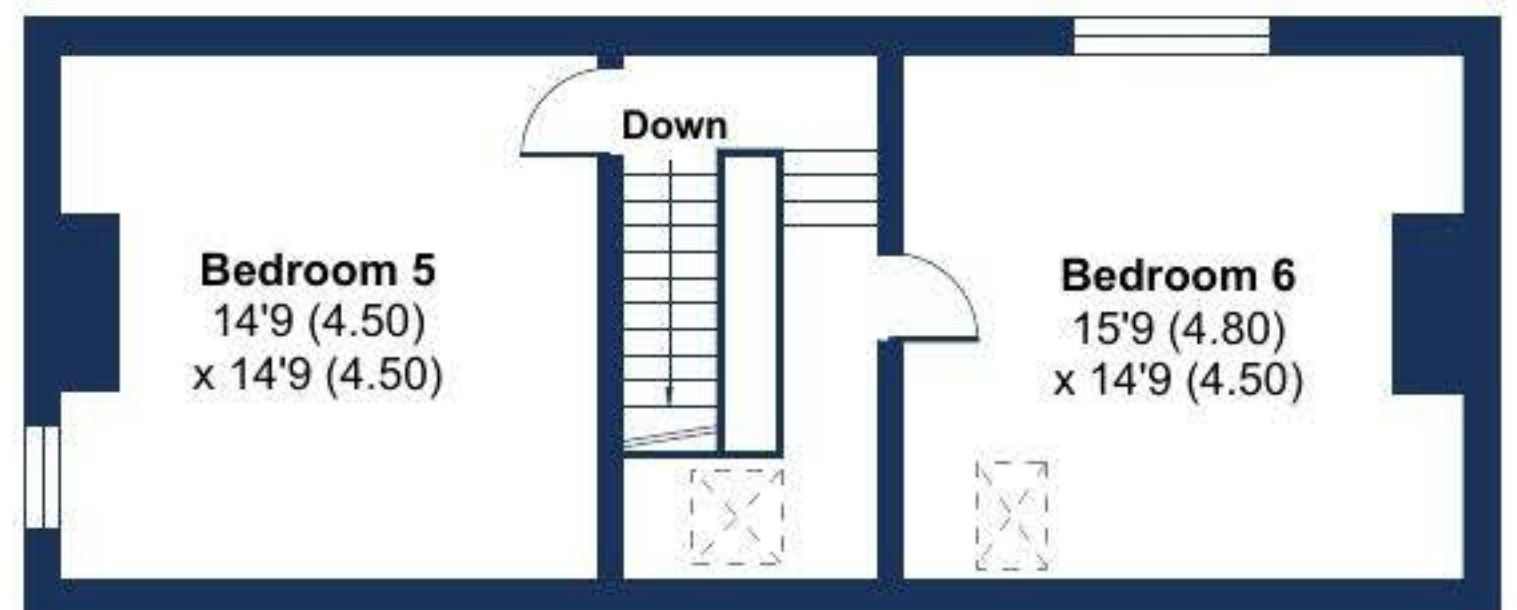
Outbuildings = 216 sq ft / 20.1 sq m

Total = 4887 sq ft / 454 sq m

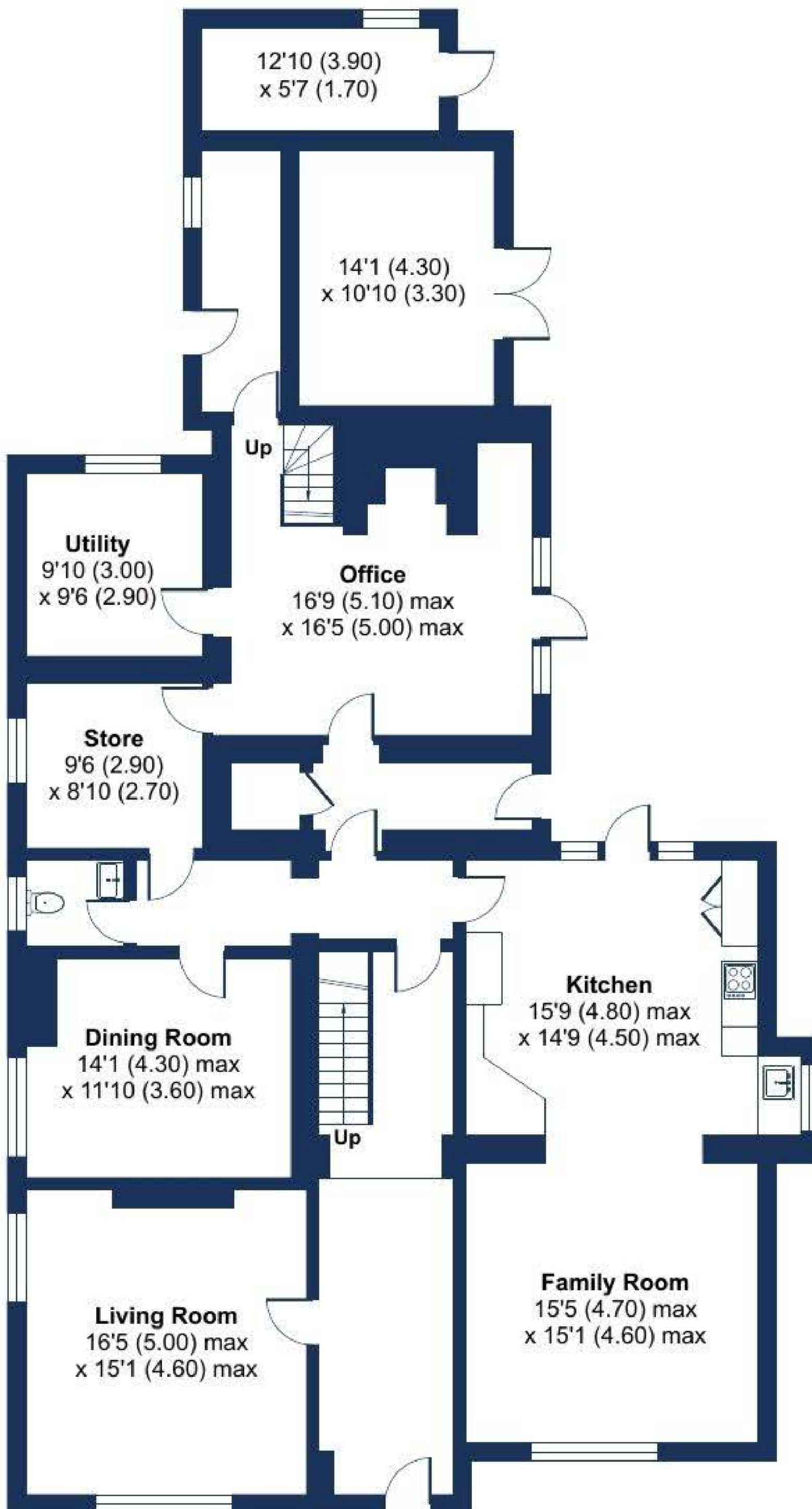
For identification only - Not to scale



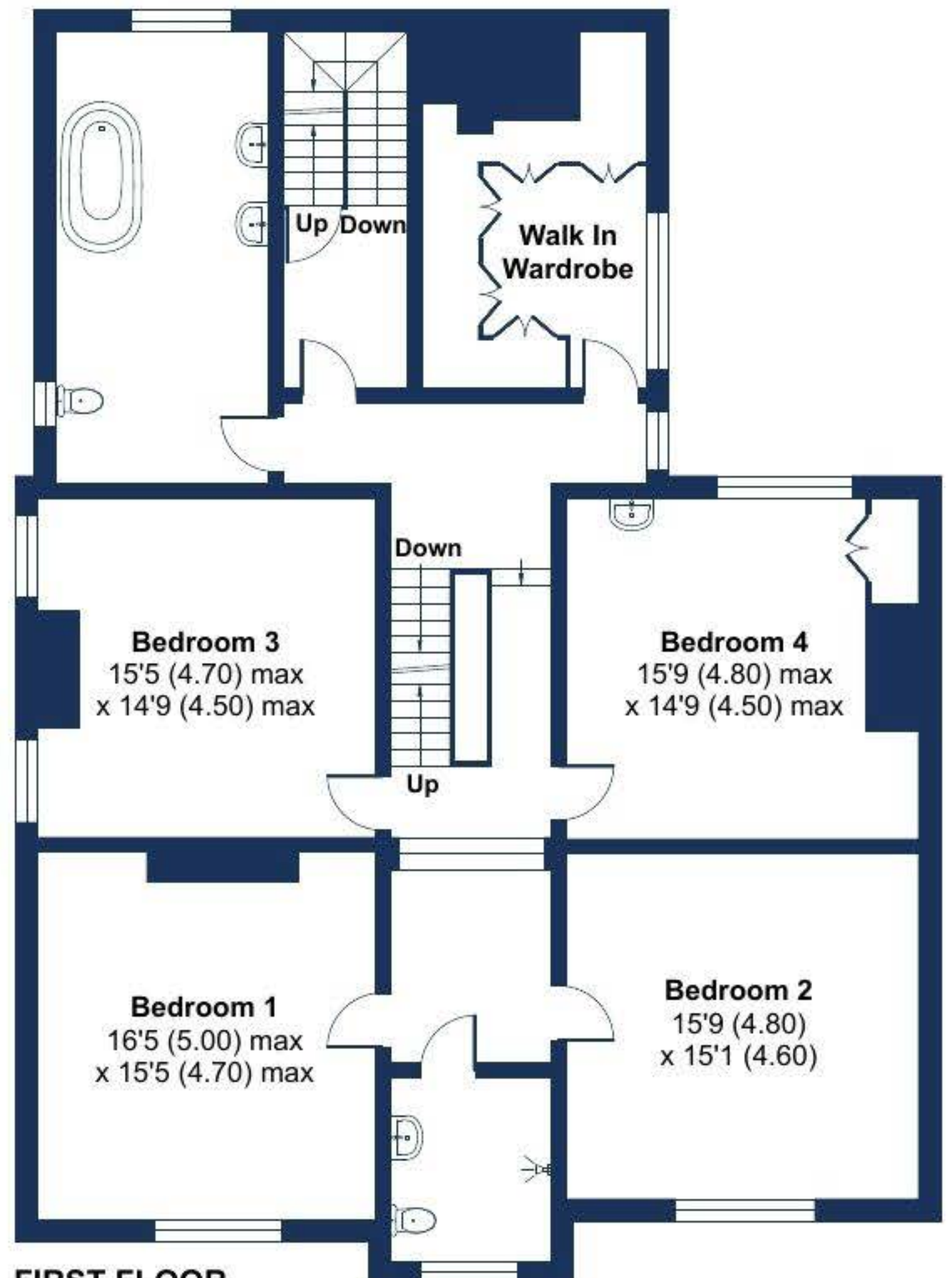
SECOND FLOOR 2



SECOND FLOOR 1



GROUND FLOOR



FIRST FLOOR

