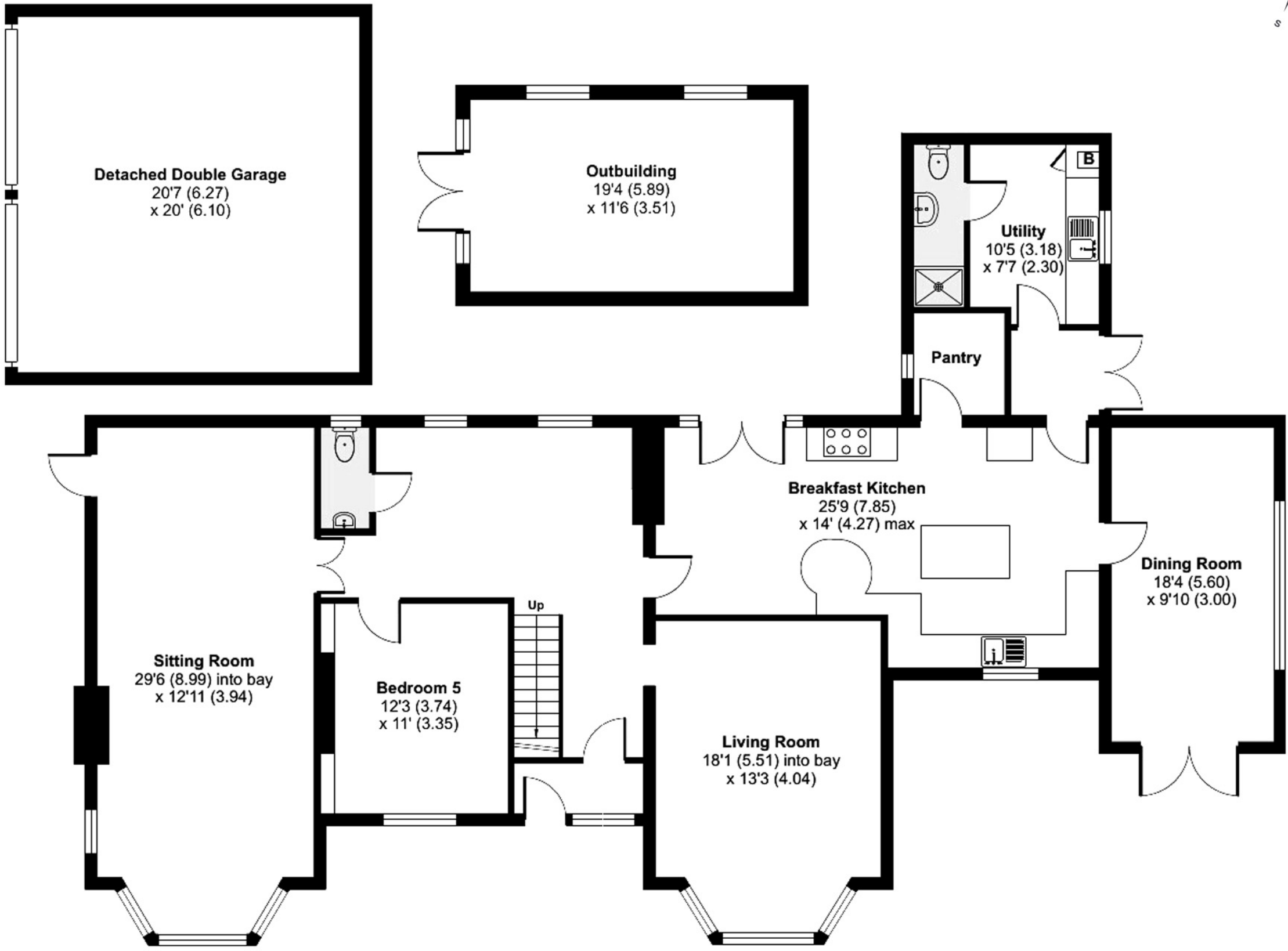


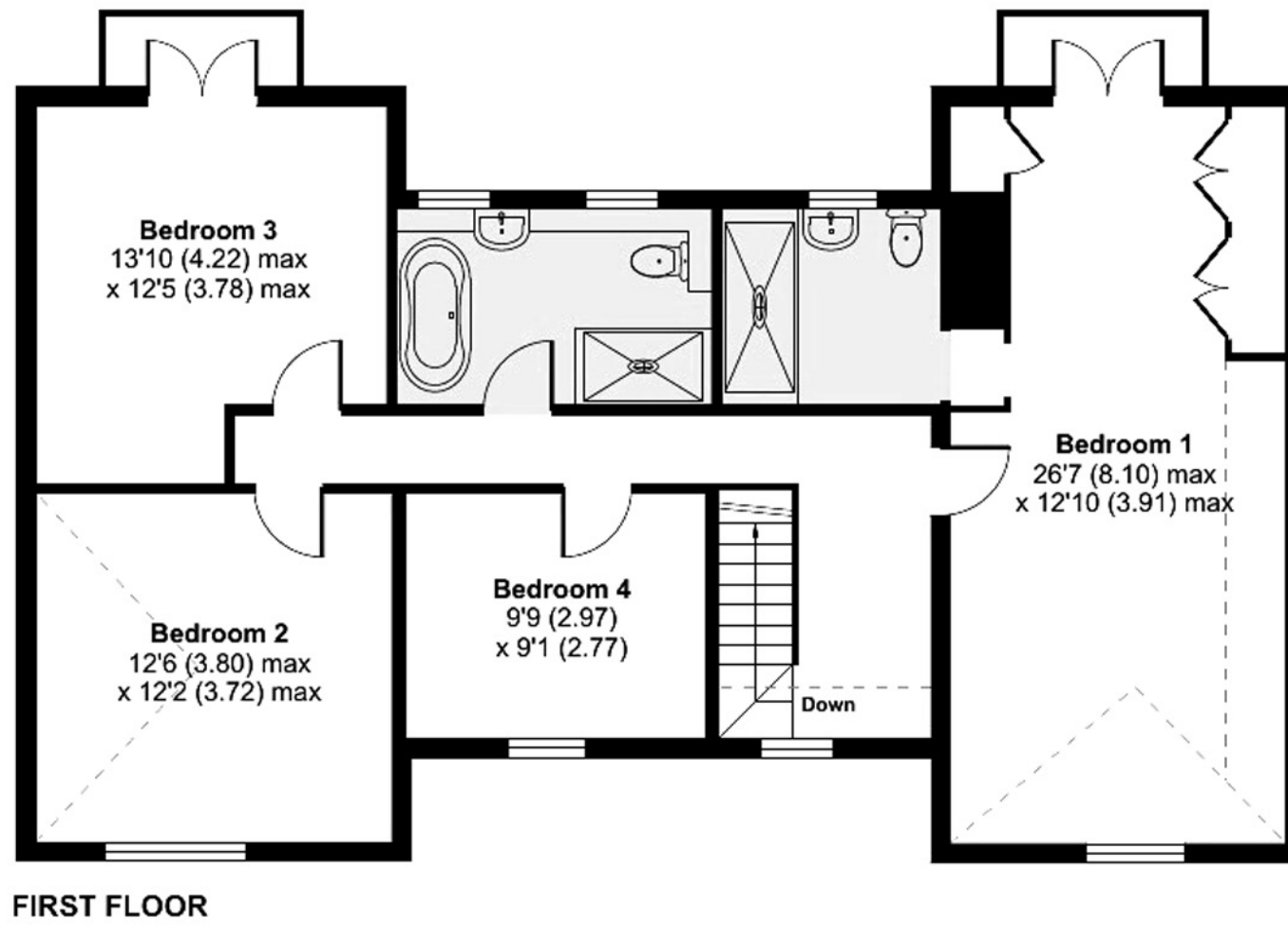
Watermead, Old Hall Road  
Troutbeck Bridge, Windermere, LA23



GROUND FLOOR

Total area approx. 314 sq. metres (3381 sq. feet)

**Watermead, Old Hall Road  
Troutbeck Bridge, Windermere, LA23**



**Total area approx. 314 sq. metres (3381 sq. feet)**